

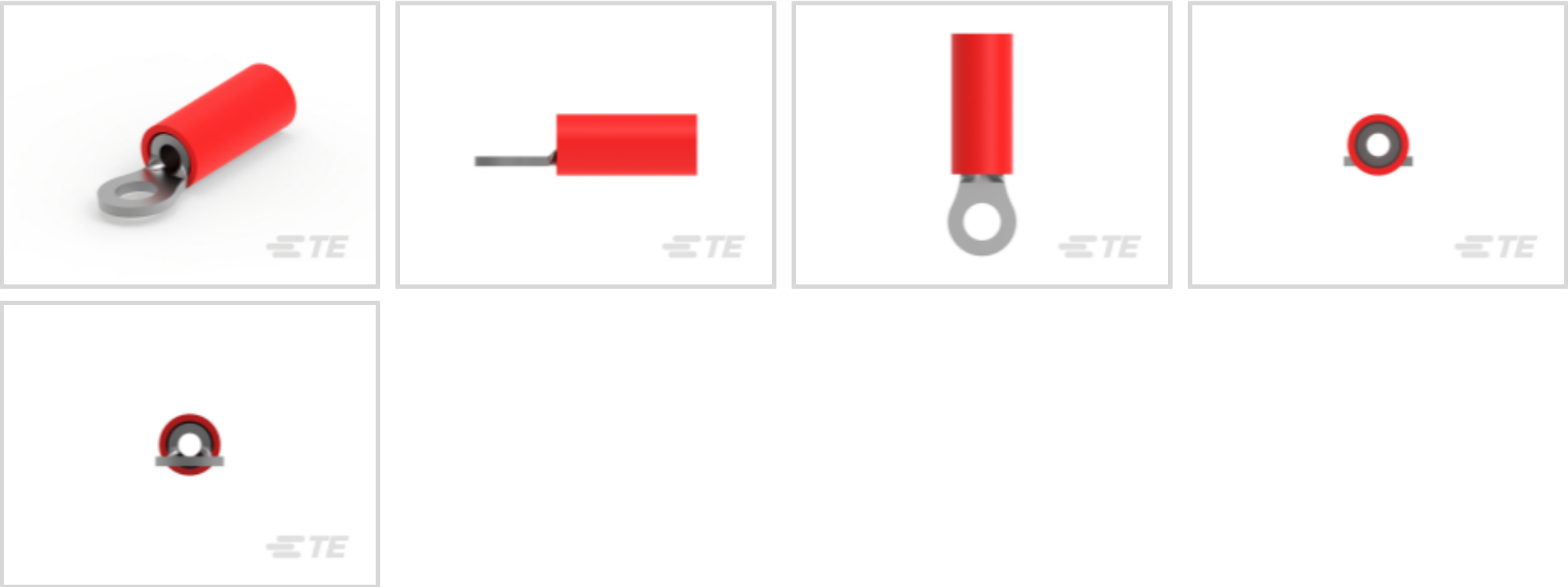


PIDG

TE Internal #: 52273-1
Closed Ring Tongue Terminal, 20 AWG, #4 / M2.5 Stud, 2.84 mm [.112 in] Stud Diameter, Closed Barrel, Straight, Tin Plating, Partially Insulated, PIDG

[View on TE.com >](#)

Terminals & Splices > Ring Terminals > PIDG Ring Tongue Terminals



Ring Terminal Product Type: Closed Ring Tongue Terminal

Wire Size: 1186 CMA

Stud Size: #4, M2.5

[All PIDG Ring Tongue Terminals \(410\)](#)

Features

Product Type Features

Ring Terminal Product Type	Closed Ring Tongue Terminal
Stud Size	#4, M2.5
Sealable	No
Wire Insulation Support Retention Type	Insulation Restriction

Configuration Features

Number of Holes	1
-----------------	---

Electrical Characteristics

Voltage Rating	300 V
----------------	-------

Body Features

Insulation Sleeve Color	Red
Stripe Color	Red

Contact Features

Military Part Class	Class I
---------------------	---------



Barrel Type	Closed
Terminal Orientation	Straight
Terminal Plating Material	Tin

Mechanical Attachment

Wire Insulation Support	With
-------------------------	------

Dimensions

Wire Size	1186 CMA
Stud Diameter	2.84 mm[.112 in]
Tongue Thickness	.79 mm[.031 in]
Product Length	18.64 mm[.734 in]
Compatible Insulation Diameter (Max)	2.79 mm[.11 in]
Compatible Insulation Diameter Range	1.17 – 2.79 mm[.046 – .11 in]

Usage Conditions

Insulation Option	Partially Insulated
-------------------	---------------------

Operation/Application

Compatible With Wire Base Material	Copper
Compatible With Wire Plating Material	Tin

Industry Standards

Government Qualified Terminal	Yes
-------------------------------	-----

Packaging Features

Packaging Quantity	1000
Packaging Method	Loose Piece

Product Compliance

For compliance documentation, visit the product page on TE.com>

EU RoHS Directive 2011/65/EU	Compliant
EU ELV Directive 2000/53/EC	Compliant
China RoHS 2 Directive MIIT Order No 32, 2016	No Restricted Materials Above Threshold
EU REACH Regulation (EC) No. 1907/2006	Current ECHA Candidate List: JAN 2025 (247) Candidate List Declared Against: JAN 2025 (247) Does not contain REACH SVHC



Halogen Content	Low Halogen - Br, Cl, F, I < 900 ppm per homogenous material. Also BFR/CFR/PVC Free
Solder Process Capability	Not applicable for solder process capability

Product Compliance Disclaimer

This information is provided based on reasonable inquiry of our suppliers and represents our current actual knowledge based on the information they provided. This information is subject to change. The part numbers that TE has identified as EU RoHS compliant have a maximum concentration of 0.1% by weight in homogenous materials for lead, hexavalent chromium, mercury, PBB, PBDE, DBP, BBP, DEHP, DIBP, and 0.01% for cadmium, or qualify for an exemption to these limits as defined in the Annexes of Directive 2011/65/EU (RoHS2). Finished electrical and electronic equipment products will be CE marked as required by Directive 2011/65/EU. Components may not be CE marked. Additionally, the part numbers that TE has identified as EU ELV compliant have a maximum concentration of 0.1% by weight in homogenous materials for lead, hexavalent chromium, and mercury, and 0.01% for cadmium, or qualify for an exemption to these limits as defined in the Annexes of Directive 2000/53/EC (ELV). Regarding the REACH Regulation, the information TE provides on SVHC in articles for this part number is based on the latest European Chemicals Agency (ECHA) 'Guidance on requirements for substances in articles' posted at this URL: <https://echa.europa.eu/guidance-documents/guidance-on-reach>

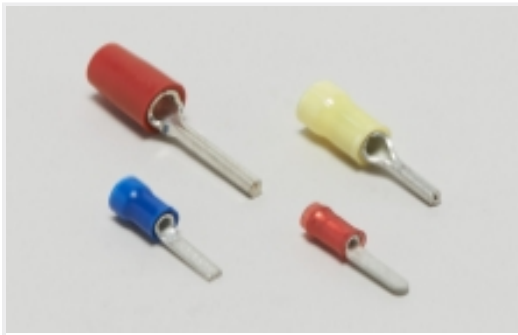
Compatible Parts

 TE Part # 2392021-1 RED BATTERY DAHT KIT 110V (47689-4)	 TE Part # 169404 CERTI-LOK DIE	 TE Part # 2063030-1 SDE DIESET, RBY, UL	 TE Part # 525690 DAHT PG PIDG 20-18 ASSY
 TE Part # 59300 T-HEAD PIDG PG 26-16 ASSY	 TE Part # 47806-2 DIES PIDG 22-16 DIE SET	 TE Part # 2392021-2 RED BATTERY DAHT KIT 220V (47689-4)	 TE Part # 47386-4 DAHT PG PIDG 26-16 ASSY
 TE Part # 58423-1 DIE, RBY IS9252	 TE Part # 47386 DAHT PG PIDG 26-16 ASSY	 TE Part # 58433-3 PRO CR ASSY, RBY IS9252	 TE Part # 59170 T-HEAD PIDG SH 26-14 ASSY

Also in the Series | PIDG



Compression Connectors(17)



Crimp Wire Pins, Tabs & Ferrules(41)



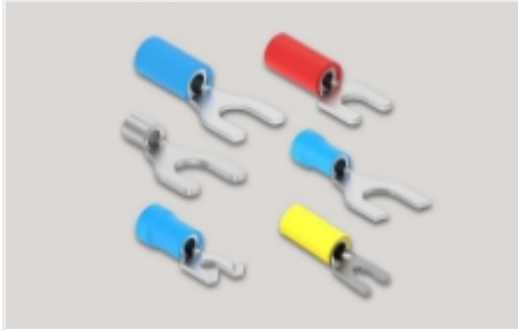
Knife Disconnects(11)



Quick Disconnects(38)



Ring Terminals(588)



Spade Terminals(228)



Special Purpose Terminals(1)



Splices(41)

Customers Also Bought

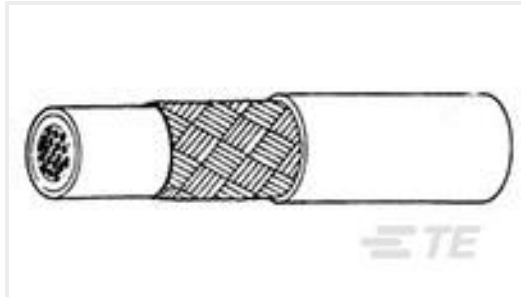


TE Part #650083-000
D-436-59

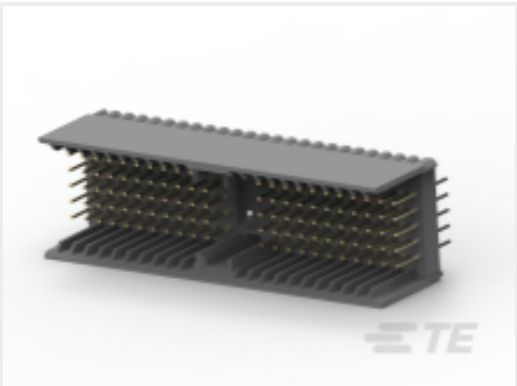


TE Part #2-320559-4
SPLICE BUTT PIDG 22-16; TAPE

TE Part #699299-000
MTCX2X-200-200



TE Part #F09268-000
55PC6240-22-9-9CS2502



TE Part #3-100143-0
PACK/A MALE HDR 110P, 2MM HM



TE Part #CAT-P592-R472A
PIDG Ring Tongue Terminals

TE Part #909117-000
D-659-0087

TE Part #2560-215-1631
CONT PIN

TE Part #699225N001
MTCB1X-105-XXXCS025

Documents



Product Drawings

TERMINAL,PIDG R IR 20 4

English

CAD Files

3D PDF

3D

Customer View Model

ENG_CVM_CVM_52273-1_M.2d_dxf.zip

English

Customer View Model

ENG_CVM_CVM_52273-1_M.3d_igs.zip

English

Customer View Model

ENG_CVM_CVM_52273-1_M.3d_stp.zip

English

By downloading the CAD file I accept and agree to the [Terms and Conditions](#) of use.