



CGS SM

TE Internal #: 5406514-1
Single Port, 1 x 1, Low Profile, RJ Type Jacks & Plugs, Jack, Inverted
- Latch Up, Right Angle, Cat 3, Surface Mount, CGS SM, RJ25
Connectors

[View on TE.com >](#)

Connectors > Modular Jacks & Plugs > RJ25 Connectors



Port Configuration: **Single Port**
Port Matrix Configuration: **1 x 1**
Connector Profile: **Low**
Modular Jacks & Plugs Products: **RJ Type Jacks & Plugs**
Connector Contact Density: **Standard**

Features

Product Type Features

Grounding Options	None
Connector & Contact Terminates To	Printed Circuit Board
Connector Product Type	Connector Assembly
Connector System	Cable-to-Board
Modular Jacks & Plugs Products	RJ Type Jacks & Plugs
Modular Connector Style	Jack

Configuration Features

Number of Positions	6
Port Configuration	Single Port
Port Matrix Configuration	1 x 1
Connector Contact Density	Standard
PCB Mount Orientation	Right Angle
Number of Loaded Positions	6

Body Features



Connector Profile	Low
Modular Jack Latch Orientation	Inverted - Latch Up

Contact Features

Contact Underplating Material	Nickel
Contact Base Material	Copper Alloy
Contact Mating Area Plating Material	Gold (Au)
Contact Current Rating (Max)	1.5 A
PCB Contact Termination Area Plating Material	Tin

Termination Features

Termination Method to PCB	Surface Mount
---------------------------	---------------

Mechanical Attachment

Mating Alignment	Without
Connector Mounting Type	Board Mount
Panel Mount Feature	With

Housing Features

Mating Entry Location	Side
Housing Color	Gray
Housing Material	High Temperature Thermoplastic
Centerline (Pitch)	1.02 mm[.04 in]

Dimensions

Connector Height	12.95 mm[.51 in]
PCB Thickness (Recommended)	1.6 mm[.063 in]

Usage Conditions

Operating Temperature Range	-40 – 70 °C[-40 – 158 °F]
-----------------------------	---------------------------

Operation/Application

Circuit Application	Signal
Shielded	No

Industry Standards

Performance Category	Cat 3
UL Flammability Rating	UL 94V-0

Packaging Features

--	--



Packaging Method	Tape Mounted on Reel
Packaging Quantity	600

Product Compliance

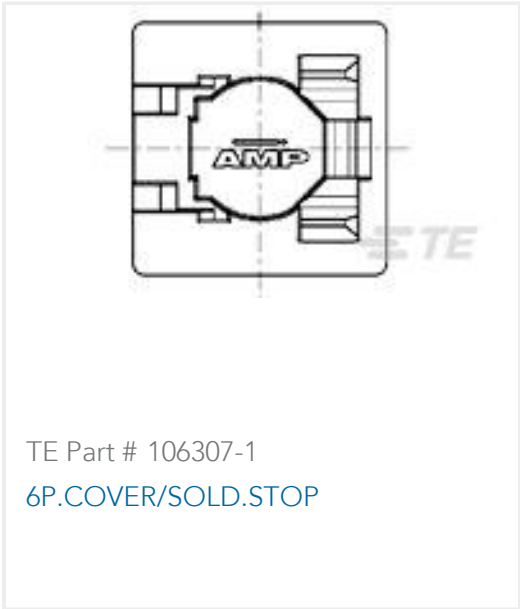
For compliance documentation, visit the product page on TE.com>

EU RoHS Directive 2011/65/EU	Compliant
EU ELV Directive 2000/53/EC	Compliant
China RoHS 2 Directive MIIT Order No 32, 2016	No Restricted Materials Above Threshold
EU REACH Regulation (EC) No. 1907/2006	Current ECHA Candidate List: JAN 2025 (247) Candidate List Declared Against: JAN 2025 (247) Does not contain REACH SVHC
Halogen Content	Not Low Halogen - contains Br or Cl > 900 ppm.
Solder Process Capability	Reflow solder capable to 245°C

Product Compliance Disclaimer

This information is provided based on reasonable inquiry of our suppliers and represents our current actual knowledge based on the information they provided. This information is subject to change. The part numbers that TE has identified as EU RoHS compliant have a maximum concentration of 0.1% by weight in homogenous materials for lead, hexavalent chromium, mercury, PBB, PBDE, DBP, BBP, DEHP, DIBP, and 0.01% for cadmium, or qualify for an exemption to these limits as defined in the Annexes of Directive 2011/65/EU (RoHS2). Finished electrical and electronic equipment products will be CE marked as required by Directive 2011/65/EU. Components may not be CE marked. Additionally, the part numbers that TE has identified as EU ELV compliant have a maximum concentration of 0.1% by weight in homogenous materials for lead, hexavalent chromium, and mercury, and 0.01% for cadmium, or qualify for an exemption to these limits as defined in the Annexes of Directive 2000/53/EC (ELV). Regarding the REACH Regulation, the information TE provides on SVHC in articles for this part number is based on the latest European Chemicals Agency (ECHA) 'Guidance on requirements for substances in articles' posted at this URL: <https://echa.europa.eu/guidance-documents/guidance-on-reach>

Compatible Parts



Also in the Series | CGS SM



Expanded Beam Fiber Optics(5)



LC Connectors(1)



RJ14 Connectors(1)



RJ22 Connectors(1)



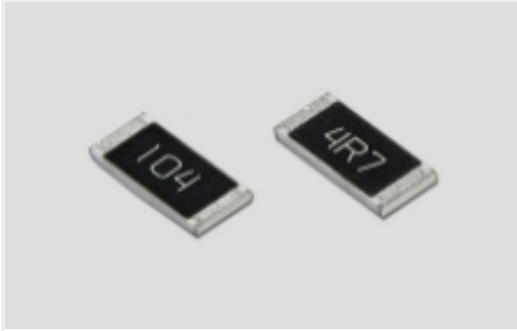
RJ25 Connectors(1)



RJ45 Connectors(3)



SC Connectors(2)

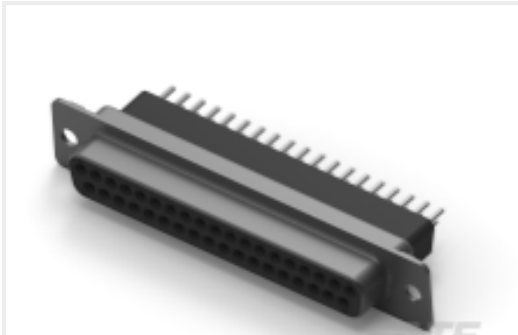


Surface Mount Resistors(549)

Customers Also Bought



TE Part #1879011-9
SMF2 470R 5%



TE Part #CAT-025-DRAVS4277
D-Sub Receptacle Assembly: Vertical,
Shell Size 4, 2.77mm



TE Part #3-1676123-9
1/2W SM M/OX 5% 33R



TE Part #1SNA105209R1400
M4/6



TE Part #2-1445096-5
MICRO MNL HDR ASSY SINGLE ROW



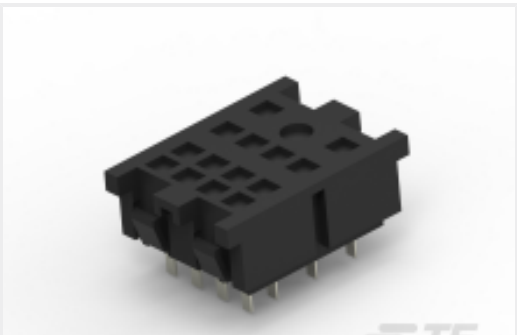
TE Part #6-103634-1
12 MTE HDR SRRA LTCH.100CL LF



TE Part #6-104071-1
12 SYSTEM 50 HDR SRST SHRD SN



TE Part #1-2176412-7
5W XSM M/OX 5% 24R



TE Part #1419106-2
27E007=SOCKET,KH,14,PC,PHEN,BL,
PCB

Documents



Product Drawings

MJ,RJ11,SMT,6/6,GRAY,22" REEL

English

CAD Files

Customer View Model

ENG_CVM_CVM_5406514-1_C.2d_dxf.zip

English

3D PDF

3D

Customer View Model

ENG_CVM_CVM_5406514-1_C.3d_igs.zip

English

Customer View Model

ENG_CVM_CVM_5406514-1_C.3d_stp.zip

English

By downloading the CAD file I accept and agree to the [Terms and Conditions](#) of use.

Datasheets & Catalog Pages

1-1773464-9_MODULAR_JACKS_SINGLE_PORT_PCB_MOUNT

English

Product Specifications

Application Specification

English

Application Specification

English

Agency Approvals

CSA Certificate

English