

Z-PACK 2mm HM

TE Internal #: 5646957-1
PCB Mount Header, Right Angle, Board-to-Board, 7 Position, 3 mm
[.118 in] Centerline, Fully Shrouded, Gold (Au), Z-PACK 2mm HM
[View on TE.com >](#)



Connectors > PCB Connectors > PCB Headers & Receptacles



PCB Connector Type: **PCB Mount Header**
PCB Mount Orientation: **Right Angle**
Connector System: **Board-to-Board**
Number of Positions: **7**
Number of Rows: **1**

Features

Product Type Features

Connector Shape	Rectangular
PCB Connector Type	PCB Mount Header
Connector System	Board-to-Board
Header Type	Fully Shrouded
Sealable	No
Connector & Contact Terminates To	Printed Circuit Board
Connector Product Type	Connector Assembly

Configuration Features

Number of Loaded Positions	7
Number of Power Positions	7
PCB Mount Orientation	Right Angle
Number of Positions	7
Number of Rows	1

Electrical Characteristics

Operating Voltage	250 VDC
-------------------	---------

Body Features

Primary Product Color	Gray
-----------------------	------

Contact Features

--	--



Contact Underplating Material	Nickel
Contact Underplating Material Thickness	1.27 µm[50 µin]
Contact Mating Area Plating Material Thickness	.76 µm[30 µin]
PCB Contact Termination Area Plating Material Thickness	.5 – 1.25 µm[19.68 – 49.21 µin]
Contact Layout	Inline
Contact Base Material	Copper Alloy
PCB Contact Termination Area Plating Material	Tin
Contact Mating Area Plating Material	Gold (Au)
Contact Type	Blade
Contact Current Rating (Max)	10 A

Termination Features

Termination Post & Tail Length	3.22 mm[.126 in]
Termination Method to PCB	Through Hole - Press-Fit

Mechanical Attachment

PCB Mount Alignment Type	Pegs
PCB Mount Retention	Without
PCB Mount Alignment	With
Connector Mounting Type	Board Mount
Mating Alignment	Without

Housing Features

Housing Material	Polyester
Centerline (Pitch)	3 mm[.118 in]

Dimensions

Connector Width	24 mm[.944 in]
PCB Thickness (Recommended)	1.4 mm[.055 in]
Connector Height	9.7 mm[.381 in]
Connector Length	22.34 mm[.88 in]

Usage Conditions

Operating Temperature (Max)	125 °C[257 °F]
Operating Temperature Range	-55 – 125 °C[-67 – 257 °F]

Operation/Application

Circuit Application	Power
---------------------	-------



Industry Standards

Glow Wire Rating	Standard Part - Not Glow Wire
UL Flammability Rating	UL 94V-0

Packaging Features

Packaging Quantity	23
Packaging Method	Tube

Product Compliance

For compliance documentation, visit the product page on TE.com>

EU RoHS Directive 2011/65/EU	Compliant
EU ELV Directive 2000/53/EC	Compliant
China RoHS 2 Directive MIIT Order No 32, 2016	No Restricted Materials Above Threshold
EU REACH Regulation (EC) No. 1907/2006	Current ECHA Candidate List: JAN 2025 (247) Candidate List Declared Against: JUNE 2024 (241) Does not contain REACH SVHC
Halogen Content	Not Low Halogen - contains Br or Cl > 900 ppm.
Solder Process Capability	Not applicable for solder process capability

Product Compliance Disclaimer

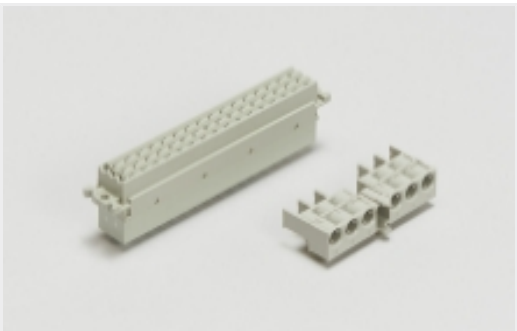
This information is provided based on reasonable inquiry of our suppliers and represents our current actual knowledge based on the information they provided. This information is subject to change. The part numbers that TE has identified as EU RoHS compliant have a maximum concentration of 0.1% by weight in homogenous materials for lead, hexavalent chromium, mercury, PBB, PBDE, DBP, BBP, DEHP, DIBP, and 0.01% for cadmium, or qualify for an exemption to these limits as defined in the Annexes of Directive 2011/65/EU (RoHS2). Finished electrical and electronic equipment products will be CE marked as required by Directive 2011/65/EU. Components may not be CE marked. Additionally, the part numbers that TE has identified as EU ELV compliant have a maximum concentration of 0.1% by weight in homogenous materials for lead, hexavalent chromium, and mercury, and 0.01% for cadmium, or qualify for an exemption to these limits as defined in the Annexes of Directive 2000/53/EC (ELV). Regarding the REACH Regulation, the information TE provides on SVHC in articles for this part number is based on the latest European Chemicals Agency (ECHA) 'Guidance on requirements for substances in articles' posted at this URL: <https://echa.europa.eu/guidance-documents/guidance-on-reach>

Compatible Parts

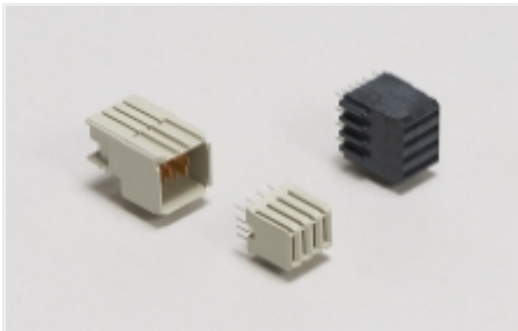


TE Part # 5223995-4
UPM EXPANDED RECEPTACLE
ASSEMB

Also in the Series | Z-PACK 2mm HM



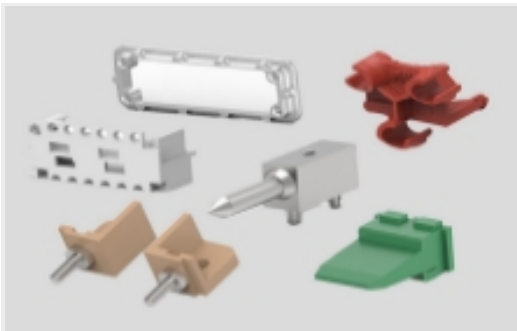
Backplane Connector Housings(4)



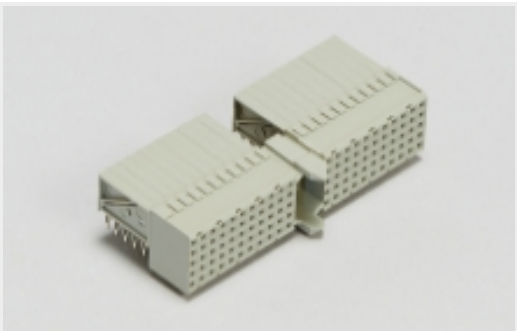
Backplane Power Connectors(1)



Connector Caps & Covers(62)



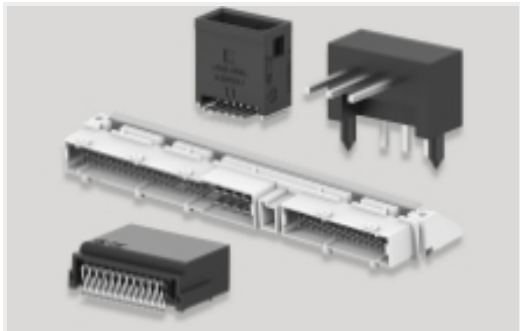
Connector Hardware(91)



Hard Metric Backplane Connectors
(266)



Insertion & Extraction Tools(2)



PCB Headers & Receptacles(46)



Rectangular Power Connectors(46)

Customers Also Bought



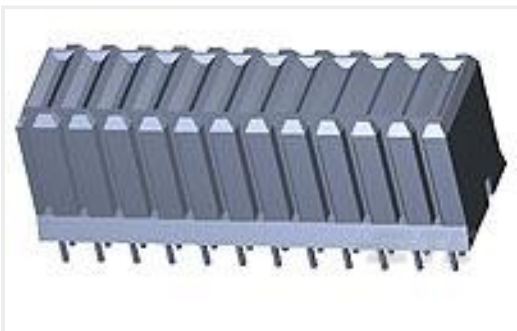
TE Part #2301996-7
RJ45 JACK INT.MAG. 1GB LED 1X2
INV.



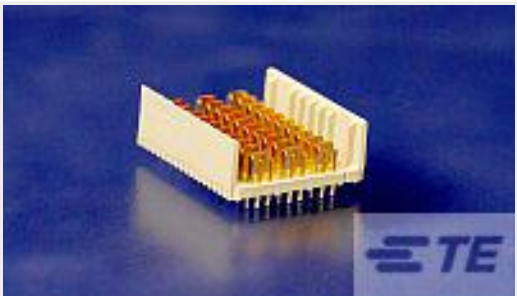
TE Part #CAT-AM74-UN384H
AMP-LATCH UNIVERSAL HEADERS



TE Part #1-6450550-5
MBXL VERT RCPT 2P+24S+2P



TE Part #120953-4
UPM EXPANDED RCPT ASSEMBLY



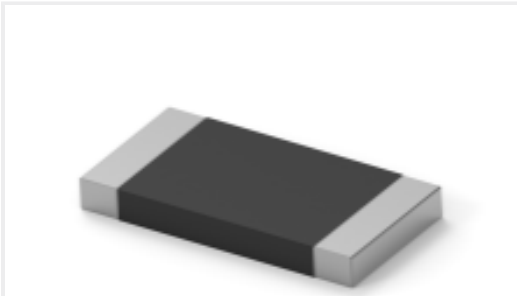
TE Part #6469085-1
HMZD 3PAIR, HDR ASSY, 25MM MOD



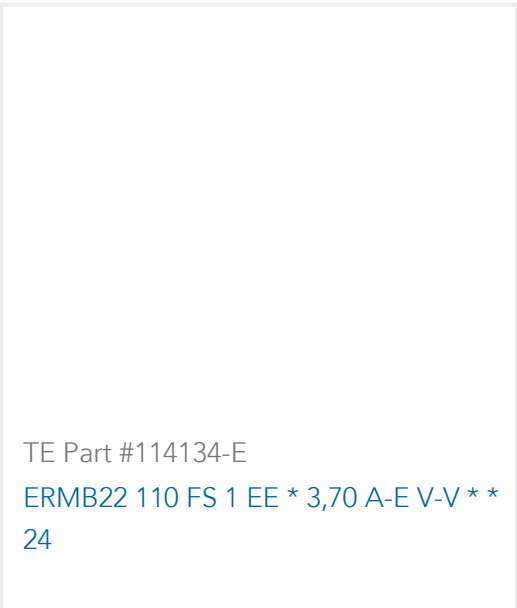
TE Part #3-338309-2
9POS.HD20 PLUG ASSY



TE Part #499287-1
UNIVERSAL HEADER LATCH



TE Part #1-2176422-8
TLRP 2512 3.0W R004 1% 25PPM 4K RL



Documents

CAD Files

3D PDF

English

Customer View Model

ENG_CVM_5646957-1_A.2d_dxf.zip

English

Customer View Model

ENG_CVM_5646957-1_A.3d_igs.zip

English

Customer View Model

ENG_CVM_5646957-1_A.3d_stp.zip

English

By downloading the CAD file I accept and agree to the [Terms and Conditions](#) of use.

Datasheets & Catalog Pages

POWER_CONNECTORS_CATALOG_SEC01_BOARD_TO_BOARD

English

2_PIECE_POWER_CONNECTORS_qrg_4-1773458-1

English

Product Specifications

Engineering Report

English

Agency Approvals

UL Report

English