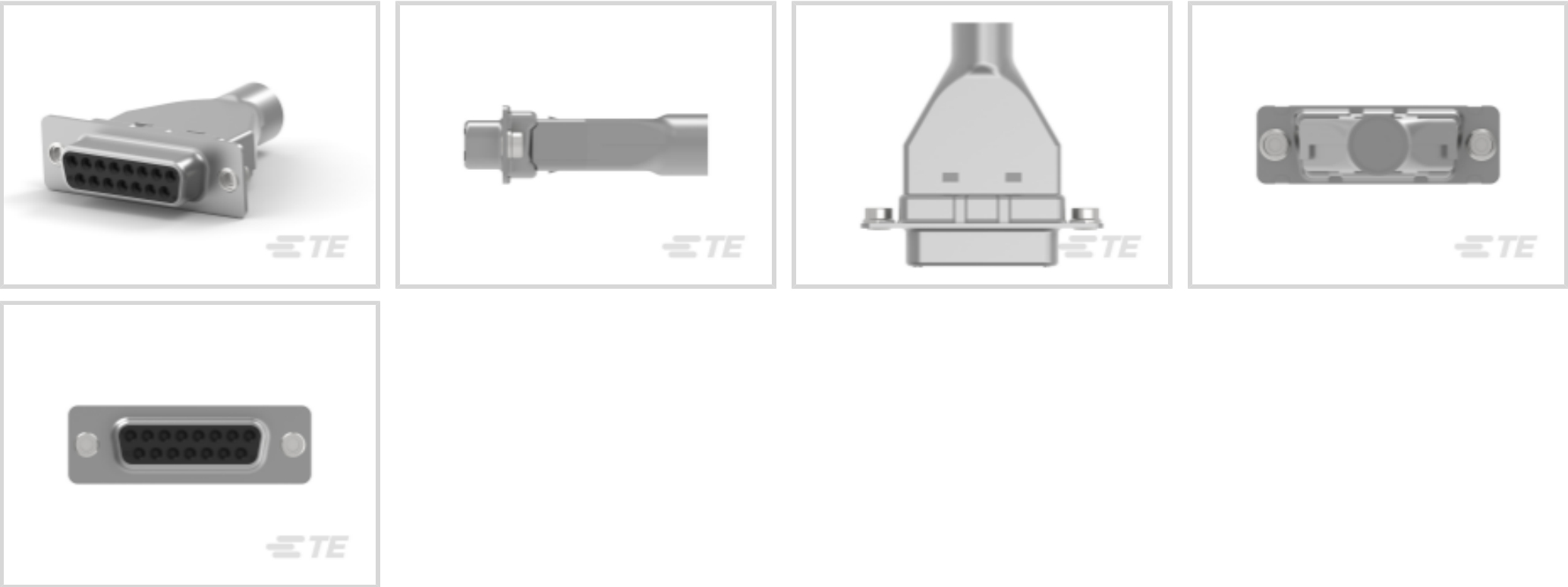




Connectors > D-Shaped Connectors > D-Sub Crimp Recpt Signal 15 Posn, Socket Size 20, Shell Size 2



Number of Positions: 15  
Connector & Housing Type: Receptacle  
Connector System: Cable-to-Cable  
Connector Mounting Type: Panel Mount  
Connector Shell Size: 2

[All D-Sub Crimp Recpt Signal 15 Posn, Socket Size 20, Shell Size 2 \(9\)](#)

Features

Product Type Features

Shell Material Configuration	Full Metal Shell
Sealable	No
Connector & Housing Type	Receptacle
Connector System	Cable-to-Cable
Connector Shell Size	2
Connector & Contact Terminates To	Wire & Cable

Configuration Features

Number of Positions	15
---------------------	----

Body Features

Shell Plating Material	Tin over Copper
Primary Product Color	Black
Shield Plating Material	Tin



Insert Material	Thermoplastic
Shield Material	Steel

Contact Features

Contact Size	Size 20
Contact Options	Order Separately

Termination Features

Termination Method to Wire & Cable	Crimp
------------------------------------	-------

Mechanical Attachment

Mating Retention	With
Mating Retention Type	Clinch Nut, 4-40 UNC
Connector Mounting Type	Panel Mount

Housing Features

Housing Material	Nylon GF
Shell Material	Steel
Centerline (Pitch)	2.74 mm [.108 in]

Dimensions

Compatible Insulation Diameter Range	4.83 – 8.38 mm
--------------------------------------	----------------

Usage Conditions

Operating Temperature Range	-55 – 105 °C [-67 – 221 °F]
-----------------------------	-----------------------------

Operation/Application

Shielded	Yes
Circuit Application	Signal

Industry Standards

UL Flammability Rating	UL 94V-0
------------------------	----------

Packaging Features

Packaging Method	Kit, Package
Packaging Quantity	1

Product Compliance

For compliance documentation, visit the product page on [TE.com](#)>

EU RoHS Directive 2011/65/EU	Compliant
------------------------------	-----------



EU ELV Directive 2000/53/EC	Compliant
China RoHS 2 Directive MIIT Order No 32, 2016	No Restricted Materials Above Threshold
EU REACH Regulation (EC) No. 1907/2006	Current ECHA Candidate List: JAN 2025 (247) Candidate List Declared Against: JAN 2025 (247) Does not contain REACH SVHC
Halogen Content	Not Low Halogen - contains Br or Cl > 900 ppm.
Solder Process Capability	Not applicable for solder process capability

Product Compliance Disclaimer

This information is provided based on reasonable inquiry of our suppliers and represents our current actual knowledge based on the information they provided. This information is subject to change. The part numbers that TE has identified as EU RoHS compliant have a maximum concentration of 0.1% by weight in homogenous materials for lead, hexavalent chromium, mercury, PBB, PBDE, DBP, BBP, DEHP, DIBP, and 0.01% for cadmium, or qualify for an exemption to these limits as defined in the Annexes of Directive 2011/65/EU (RoHS2). Finished electrical and electronic equipment products will be CE marked as required by Directive 2011/65/EU. Components may not be CE marked. Additionally, the part numbers that TE has identified as EU ELV compliant have a maximum concentration of 0.1% by weight in homogenous materials for lead, hexavalent chromium, and mercury, and 0.01% for cadmium, or qualify for an exemption to these limits as defined in the Annexes of Directive 2000/53/EC (ELV). Regarding the REACH Regulation, the information TE provides on SVHC in articles for this part number is based on the latest European Chemicals Agency (ECHA) 'Guidance on requirements for substances in articles' posted at this URL: <https://echa.europa.eu/guidance-documents/guidance-on-reach>

Compatible Parts



TE Part # CAT-035-DCPPS202  
D-Sub Crimp: Plug, Signal, 15 Posn,  
Pin Size 20, Shell Size 2



TE Part # CAT-035-DCRSS202  
D-Sub Crimp Recpt Signal 15 Posn,  
Socket Size 20, Shell Size 2

Customers Also Bought



TE Part #5-1478762-2  
Metal backshell 15 way Top Entry-KIT



TE Part #5-1478762-3  
Metal backshell 25 way Top Ent



TE Part #5-747904-2  
9 Plug Solder Cup, Gold Flash,



TE Part #1-5745172-3  
AMPLI CBL CLMP KIT



TE Part #207463-1  
CRIMP SNAP RCPT ASSY,SZ 3



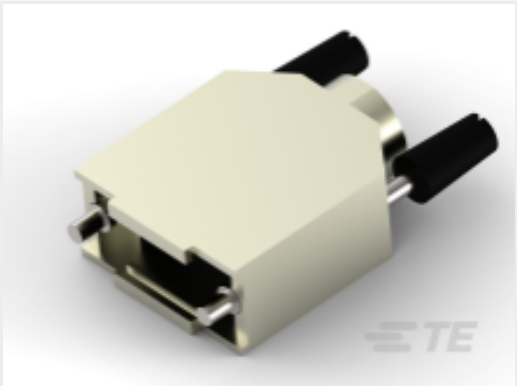
TE Part #1SNL312530R0000  
DBL125-3



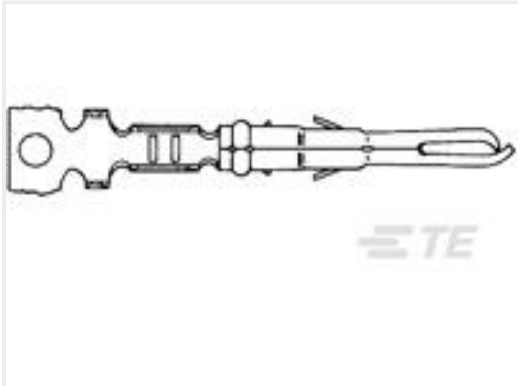
TE Part #1658682-1  
HDP-22,RCPT,SIZE 2,26 POSN



TE Part #1445390-3  
PLUG,8-4,LG INS,STD KEY



TE Part #5-1478762-1  
Metal backshell 9 way Top Entry-KIT



TE Part #640579-2  
MR SPLIT PIN AUPHBRZ LP 26-24

Documents

Product Drawings

KIT,RCPT,15P,HDP-20,SHLD HDWRE

English

CAD Files

3D PDF

3D

Customer View Model

ENG\_CVM\_CVM\_5787908-1\_O.2d\_dxf.zip

English

Customer View Model

ENG\_CVM\_CVM\_5787908-1\_O.3d\_igs.zip

English

Customer View Model

ENG\_CVM\_CVM\_5787908-1\_O.3d\_stp.zip

English

By downloading the CAD file I accept and agree to the [Terms and Conditions](#) of use.

Datasheets & Catalog Pages

AMPLIMITE Subminiature D Connectors - Cable Connectors

English

AMPLIMITE Cable Connectors and Shielding Hardware Kits QRG

English

Product Specifications

Application Specification

English



Instruction Sheets

Instruction Sheet (U.S.)

English

Agency Approvals

CSA Certificate

English