

FCB-405-0521M

✓ ACTIVE

CII | CII FCB-405 Series

TE Internal #: 6-1617760-7

General Purpose Power Relay, DC, Polarized, Monostable, 4 Form C 4PDT-CO, 5 A Contact Rating, 28 VDC Coil Voltage, Chassis Mount, CII FCB-405 Series

[View on TE.com >](#)



Relays & Contactors > Electromechanical Relays



Relay & Contactor Type: **General Purpose Power Relay**

Current Type: **DC**

Coil Magnetic System: **Polarized, Monostable**

Contact Arrangement: **4 Form C 4PDT-CO**

Contact Current Rating: **5 A**

Features

Product Type Features

Relay & Contactor Type	General Purpose Power Relay
------------------------	-----------------------------

Configuration Features

Contact Arrangement	4 Form C 4PDT-CO
---------------------	------------------

Electrical Characteristics

Coil Resistance	400 Ω
Contact Current Rating	5 A
Coil Voltage Rating	28 VDC

Body Features

Enclosure Type	Hermetically Sealed
----------------	---------------------

Contact Features

Contact Material	Silver Cadmium Oxide
Terminal Plating	Tin-Lead

Termination Features

Main Termination & Connection Type	Solder Hook Terminals
Coil Termination & Connection Type	Solder Hook Terminals

Mechanical Attachment

Product Mounting Feature Type	Mounting Brackets
-------------------------------	-------------------



Product Mount Type	Chassis Mount
--------------------	---------------

Usage Conditions

Operating Temperature Range	-70 – 125 °C[-94 – 257 °F]
Environmental Ambient Temperature (Max)	125 °C[257 °F]

Operation/Application

Vibration Resistance	30G's, 70 – 3000Hz
Shock Resistance	200G's, 6ms
Current Type	DC
Coil Magnetic System	Polarized, Monostable

Product Compliance

For compliance documentation, visit the product page on TE.com>

EU RoHS Directive 2011/65/EU	Not Compliant
EU ELV Directive 2000/53/EC	Not Compliant
China RoHS 2 Directive MIIT Order No 32, 2016	Restricted Materials Above Threshold
EU REACH Regulation (EC) No. 1907/2006	Current ECHA Candidate List: JAN 2025 (247) Candidate List Declared Against: JAN 2025 (247) SVHC > Threshold: Cadmium oxide (10% in Component Part) Article Safe Usage Statements: Use personal protective equipment as required. Do not eat, drink or smoke when using this product. Recycle if possible and dispose of the article by following all applicable governmental regulations relevant to your geographic location.
Halogen Content	Low Halogen - Br, Cl, F, I < 900 ppm per homogenous material. Also BFR/CFR/PVC Free
Solder Process Capability	Not lead free process capable

Product Compliance Disclaimer

This information is provided based on reasonable inquiry of our suppliers and represents our current actual knowledge based on the information they provided. This information is subject to change. The part numbers that TE has identified as EU RoHS compliant have a maximum concentration of 0.1% by weight in homogenous materials for lead, hexavalent chromium, mercury, PBB, PBDE, DBP, BBP, DEHP, DIBP, and 0.01% for cadmium, or qualify for an exemption to these limits as defined in the Annexes of Directive 2011/65/EU (RoHS2). Finished electrical and electronic equipment products will be CE marked as required by Directive 2011/65/EU. Components may not be CE marked. Additionally, the part numbers that TE has identified as EU ELV compliant have a maximum concentration of 0.1% by weight in homogenous materials for lead, hexavalent chromium, and mercury, and 0.01% for cadmium, or qualify for an exemption to these limits as defined in the Annexes of Directive 2000/53/EC (ELV). Regarding the REACH Regulation, the information TE provides on SVHC in articles for this part number is based on the latest European Chemicals Agency (ECHA) ‘Guidance on requirements for substances in articles’ posted at this URL: <https://echa.europa.eu/guidance-documents/guidance-on-reach>

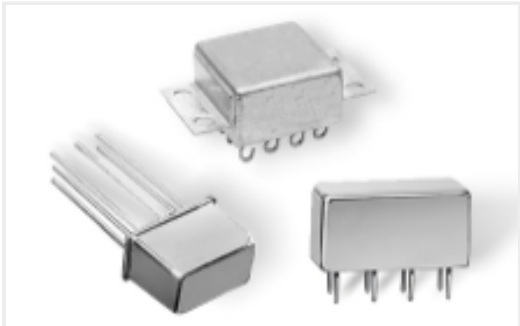


Compatible Parts



TE Part # 4-1617758-7
FCB-205-0222M=M83536/2-022M

Also in the Series | CII FCB-405 Series



DC Relays(22)



Electromechanical Relays(22)



Plug-In Relays(6)

Customers Also Bought



TE Part #2334100-4
D-SUB CRIMP MALE 37 POS



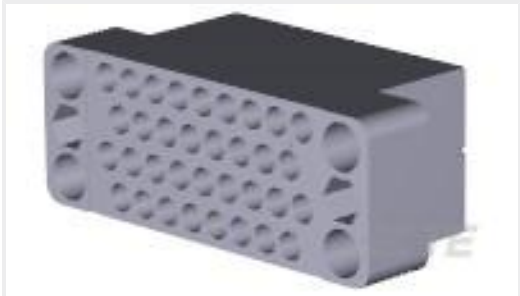
TE Part #52041
TERMINAL,R PG 8 8



TE Part #203618-1
MALE J.S. ASSY. - SHORT



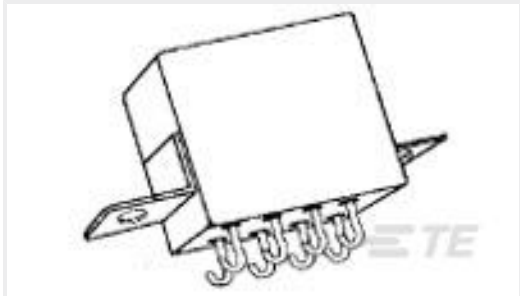
TE Part #201224-7
34 PLACE STRAIN REL. CLAMP



TE Part #200838-2
BLOCK,34 POSN,M SERIES



TE Part #4-1617004-0
B07D932BC2-0348 = M5757/23-031



TE Part #5-1617758-2
FCB-205-0226M=M83536/2-026M



TE Part #CAT-NEMA-M27500-SD
NEMA WC27500: ETFE Normal Weight Cables

FCB-405-0521M

General Purpose Power Relay, DC, Polarized, Monostable, 4 Form C 4PDT-CO, 5 A
Contact Rating, 28 VDC Coil Voltage, Chassis Mount, CII FCB-405 Series



Documents

Product Drawings

[FCB-405-0521M=M83536/5-021M](#)

English

Datasheets & Catalog Pages

[5-1773450-5_sec5_FCB-405](#)

English