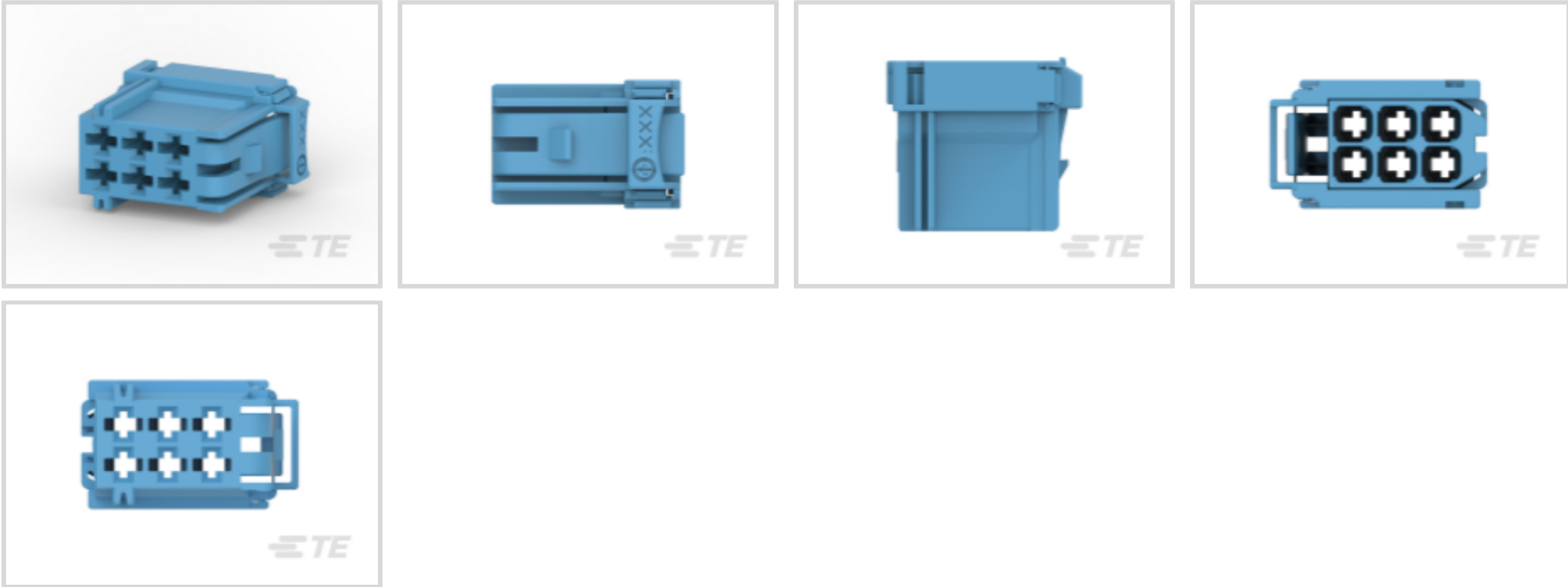




Connectors > Automotive Connectors > Automotive Housings > AMP Unsealed Connector Housing



Number of Positions: 6

Connector & Housing Type: **Housing for Female Terminals**

Mating Tab Width: 2.8 mm [.11 in]

Connector System: **Wire-to-Wire**

Centerline (Pitch): 5 mm [.197 in]

[All AMP Unsealed Connector Housing \(109\)](#)

Features

Product Type Features

Mixed & Hybrid Connector	No
Connector Shape	Rectangular
Connector & Housing Type	Housing for Female Terminals
Connector System	Wire-to-Wire
Sealable	No
Primary Locking Feature	Integrated in Housing
Connector & Contact Terminates To	Wire & Cable

Configuration Features

Number of Positions	6
Number of Rows	2

Electrical Characteristics

Operating Voltage	28 VDC
Nominal Voltage Architecture	12 V, 24 V



Body Features

Cable Exit Angle	180°
Primary Product Color	Light Blue
Connector & Keying Code	C

Contact Features

Contact Size	2.8mm
Contact Type	Receptacle
Mating Tab Width	2.8 mm[.11 in]

Mechanical Attachment

Strain Relief	Without
Terminal Position Assurance	No
Mating Alignment Type	Keyed
Mating Alignment	With
Connector Mounting Type	Cable Mount (Free-Hanging)

Housing Features

Housing Material	PBT GF
Centerline (Pitch)	5 mm[.197 in]

Dimensions

Row-to-Row Spacing	5 mm[.197 in]
Product Width	16 mm[.63 in]
Product Length	16 mm[.63 in]
Connector Height	24 mm[.945 in]

Usage Conditions

Operating Temperature (Max)	120 °C[248 °F]
Operating Temperature Range	-40 – 120 °C[-40 – 248 °F]

Operation/Application

Circuit Application	Power
---------------------	-------

Packaging Features

Packaging Quantity	2400
Packaging Method	Box

Other

Serviceable	No
-------------	----



Connector Position Assurance Capable

No

Product Compliance

For compliance documentation, visit the product page on TE.com>

EU RoHS Directive 2011/65/EU	Compliant
EU ELV Directive 2000/53/EC	Compliant
China RoHS 2 Directive MIIT Order No 32, 2016	No Restricted Materials Above Threshold
EU REACH Regulation (EC) No. 1907/2006	Current ECHA Candidate List: JAN 2025 (247) Candidate List Declared Against: JAN 2025 (247) Does not contain REACH SVHC
Halogen Content	Low Halogen - Br, Cl, F, I < 900 ppm per homogenous material. Also BFR/CFR/PVC Free
Solder Process Capability	Not applicable for solder process capability

Product Compliance Disclaimer

This information is provided based on reasonable inquiry of our suppliers and represents our current actual knowledge based on the information they provided. This information is subject to change. The part numbers that TE has identified as EU RoHS compliant have a maximum concentration of 0.1% by weight in homogenous materials for lead, hexavalent chromium, mercury, PBB, PBDE, DBP, BBP, DEHP, DIBP, and 0.01% for cadmium, or qualify for an exemption to these limits as defined in the Annexes of Directive 2011/65/EU (RoHS2). Finished electrical and electronic equipment products will be CE marked as required by Directive 2011/65/EU. Components may not be CE marked. Additionally, the part numbers that TE has identified as EU ELV compliant have a maximum concentration of 0.1% by weight in homogenous materials for lead, hexavalent chromium, and mercury, and 0.01% for cadmium, or qualify for an exemption to these limits as defined in the Annexes of Directive 2000/53/EC (ELV). Regarding the REACH Regulation, the information TE provides on SVHC in articles for this part number is based on the latest European Chemicals Agency (ECHA) 'Guidance on requirements for substances in articles' posted at this URL: <https://echa.europa.eu/guidance-documents/guidance-on-reach>

Compatible Parts



TE Part # 4-966140-6
TAB HEADER2,8X0,8MM 21POS

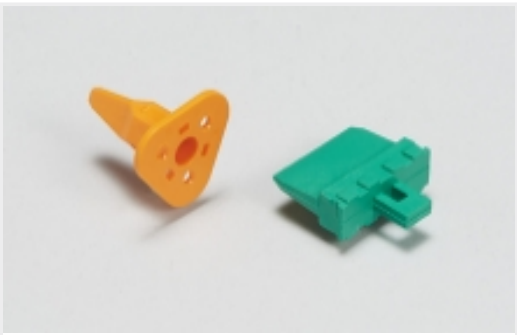


TE Part # CAT-AM705-T273
AMP MCP, RECEPTACLE AND TAB



TE Part # 3-965641-1
TAB HSG 2.8MM 6POS.

Also in the Series | AMP MCP 2.8



Automotive Connector Locks & Position Assurance(4)



Automotive Headers(31)



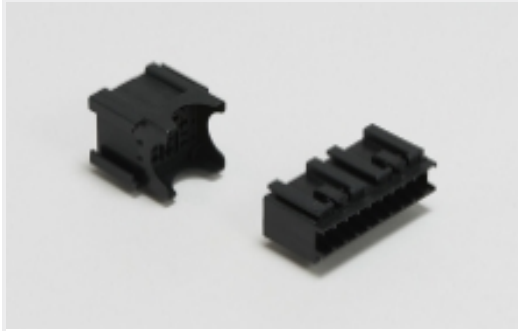
Automotive Housings(257)



Connector Seals & Cavity Plugs(5)



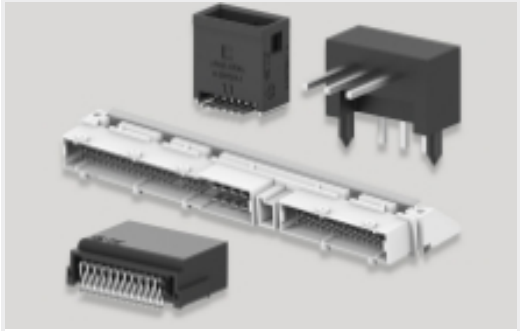
Insertion & Extraction Tools(13)



Module Components(1)



Other Automotive Connector Accessories(3)

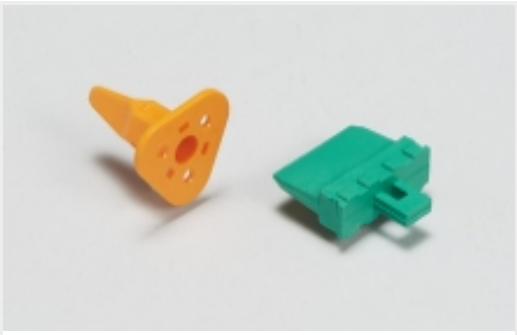


PCB Headers & Receptacles(31)



Rectangular Power Connectors(15)

Also in the Series | AMP MCP Connector System



Automotive Connector Locks & Position Assurance(4)



Automotive Headers(31)



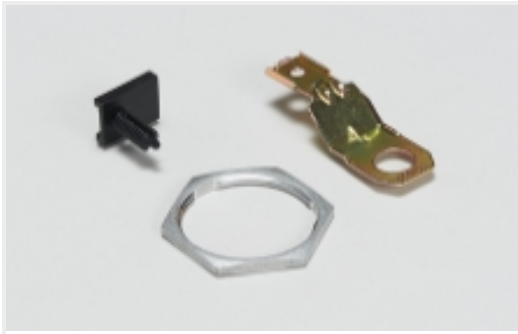
Automotive Housings(257)



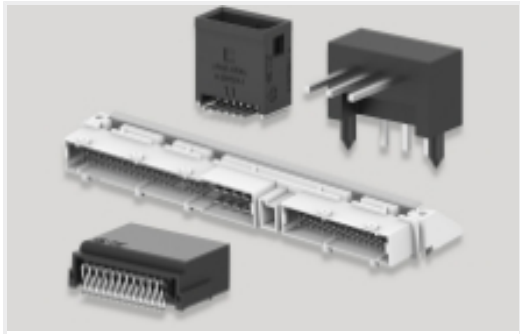
Connector Seals & Cavity Plugs(5)



Insertion & Extraction Tools(13)



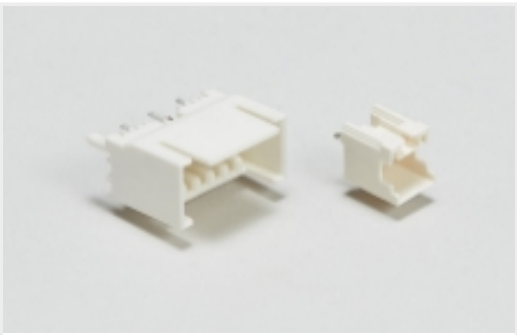
Other Automotive Connector Accessories(3)



PCB Headers & Receptacles(31)



Rectangular Power Connectors(15)



Wire-to-Board Headers & Receptacles
(30)

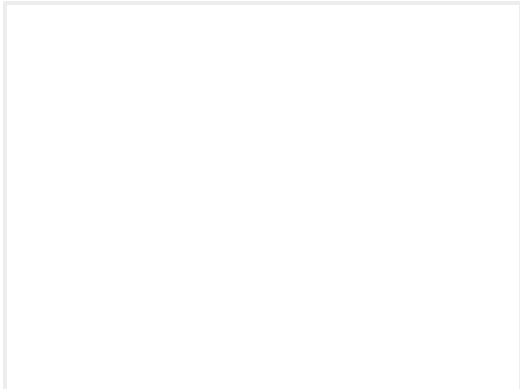
Customers Also Bought



TE Part #CAT-AM705-CH8173
AMP Unsealed Connector Housing



TE Part #1-965641-1
FLACH-STE-GEH2,8 6P



TE Part #2333679-2
MINI-FUSE RETAINER

Documents

Product Drawings

AMP MCP 2.8 HSG 6POS 2.LOCKING

English

CAD Files

3D PDF

3D

Customer View Model

ENG_CVM_CVM_6-968970-1_F.2d_dxf.zip

English

Customer View Model

ENG_CVM_CVM_6-968970-1_F.3d_igs.zip

English

Customer View Model

ENG_CVM_CVM_6-968970-1_F.3d_stp.zip

English

By downloading the CAD file I accept and agree to the [Terms and Conditions](#) of use.

Product Specifications

Application Specification

English