

ELECTRO-TAP

TE Internal #: 626437-4
Tap Splice, 20 – 18 AWG, .5 – .8 mm² Wire, Red, 17.5 mm [.688 in]
Length, Box, Stranded Wire, Discrete Wire, Fully Insulated,
ELECTRO-TAP

[View on TE.com >](#)



Terminals & Splices > Splices



Splice Type: Tap Splice
Wire Size: .5 – .8 mm²
Sealable: No
Compatible Insulation Diameter Range: 4 mm [.157 in]

Features

Product Type Features

Splice Type	Tap Splice
Sealable	No
Compatible With Discrete Wire Type	Stranded
Wire Insulation Support Retention Type	Insulation Support

Configuration Features

Compatible With Wire & Cable Type	Discrete Wire
-----------------------------------	---------------

Body Features

Primary Product Color	Red
-----------------------	-----

Contact Features

Terminal Plating Thickness	2.54 – 5.08 µm[100 – 200 µin]
Terminal Plating Material	Tin

Termination Features

Termination Method to Wire & Cable	Crimp
------------------------------------	-------

Mechanical Attachment



Wire Insulation Support	Without
-------------------------	---------

Housing Features

Housing Material	Nylon 6/6
------------------	-----------

Dimensions

Tap Wire Size	.5 – .8 mm²
Wire Size	.5 – .8 mm²
Compatible Insulation Diameter Range	4 mm[.157 in]
Product Length	17.5 mm[.688 in]

Usage Conditions

Insulation Option	Fully Insulated
-------------------	-----------------

Industry Standards

Government Qualified Splice	No
-----------------------------	----

Packaging Features

Packaging Quantity	100
Packaging Method	Box

Product Compliance

For compliance documentation, visit the product page on TE.com>

EU RoHS Directive 2011/65/EU	Compliant
EU ELV Directive 2000/53/EC	Compliant
China RoHS 2 Directive MIIT Order No 32, 2016	No Restricted Materials Above Threshold
EU REACH Regulation (EC) No. 1907/2006	Current ECHA Candidate List: JAN 2025 (247) Candidate List Declared Against: DEC 2010 (44) SVHC > Threshold: Not Yet Reviewed
Halogen Content	Low Halogen - Br, Cl, F, I < 900 ppm per homogenous material. Also BFR/CFR/PVC Free
Solder Process Capability	Not applicable for solder process capability

Product Compliance Disclaimer

This information is provided based on reasonable inquiry of our suppliers and represents our current actual knowledge based on the information they provided. This information is subject to change. The part numbers that TE has identified as EU RoHS compliant have a maximum concentration of 0.1% by weight in homogenous materials for lead, hexavalent chromium, mercury, PBB, PBDE, DBP, BBP, DEHP, DIBP, and 0.01% for cadmium, or qualify for an exemption to these



limits as defined in the Annexes of Directive 2011/65/EU (RoHS2). Finished electrical and electronic equipment products will be CE marked as required by Directive 2011/65/EU. Components may not be CE marked. Additionally, the part numbers that TE has identified as EU ELV compliant have a maximum concentration of 0.1% by weight in homogenous materials for lead, hexavalent chromium, and mercury, and 0.01% for cadmium, or qualify for an exemption to these limits as defined in the Annexes of Directive 2000/53/EC (ELV). Regarding the REACH Regulation, the information TE provides on SVHC in articles for this part number is based on the latest European Chemicals Agency (ECHA) ‘Guidance on requirements for substances in articles’ posted at this URL: <https://echa.europa.eu/guidance-documents/guidance-on-reach>

Compatible Parts

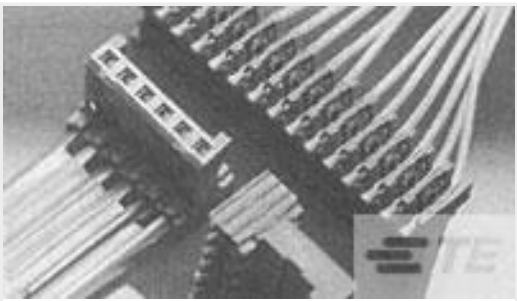


Also in the Series | ELECTRO-TAP

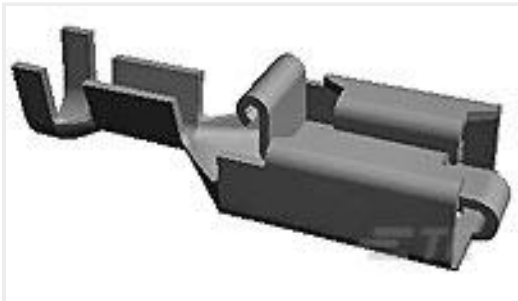


Customers Also Bought





TE Part #281708-4
PLUG HE14 IDC 90 4 P TUBE



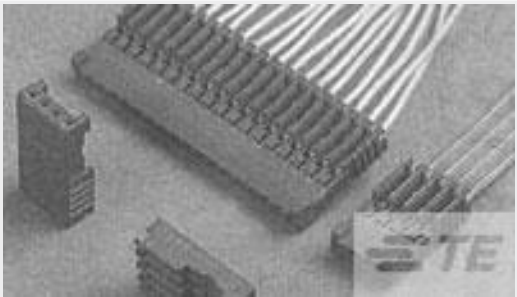
TE Part #880646-5
PL REC 0.5-1.0 MM2 0.40 X 52.32
PTPBR



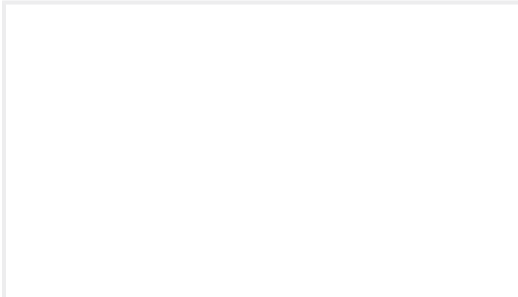
TE Part #926986-2
MNL BUCHSE 3,5 MM



TE Part #3-641435-4
04P MTA156 CONN ASSY ORNG



TE Part #281783-4
PLUG HE14 IDC 180 4 P AWG 26-24



TE Part #1-163081-2
.062 PIN ASSY 3+

Documents

Product Drawings

ELCETRO TAP ASSY

English

CAD Files

Customer View Model

ENG_CVM_626437-4_E.3d_igs.zip

English

Customer View Model

ENG_CVM_626437-4_E.3d_stp.zip

English

Customer View Model

ENG_CVM_626437-4_E.2d_dxf.zip

English

3D PDF

English

By downloading the CAD file I accept and agree to the [Terms and Conditions](#) of use.

Datasheets & Catalog Pages

ELECTRO-TAP CABLE CONNECTOR/SPLICE

English