



Terminals & Splices > Special Purpose Terminals



Special Purpose Terminal Type: **Receptacle**

Wire Size: **.8 – 2 mm²**

Terminal Material Thickness: **.4 mm [.015 in]**

Terminal Plating Material: **Unplated**

Features

Product Type Features

Wire Insulation Support Retention Type	Insulation Support
Terminal Features	Heavy Duty
Sealable	No

Configuration Features

Compatible With Wire & Cable Type	Discrete Wire
-----------------------------------	---------------

Contact Features

Barrel Type	Open
Special Purpose Terminal Type	Receptacle
Terminal Plating Material	Unplated
Terminal Orientation	Straight

Mechanical Attachment

Wire Insulation Support	With
-------------------------	------

Dimensions

Wire Size	.8 – 2 mm²
-----------	------------



Terminal Material Thickness	.4 mm[.015 in]
Product Length	26.16 mm[1.03 in]
Compatible Insulation Diameter (Max)	3.91 mm[.156 in]
Compatible Insulation Diameter Range	3.91 mm[.156 in]

Usage Conditions

Insulation Option	Uninsulated
Operating Temperature Range	-40 – 200 °C[-40 – 392 °F]

Packaging Features

Packaging Quantity	1500
Packaging Method	Reel

Product Compliance

For compliance documentation, visit the product page on TE.com>

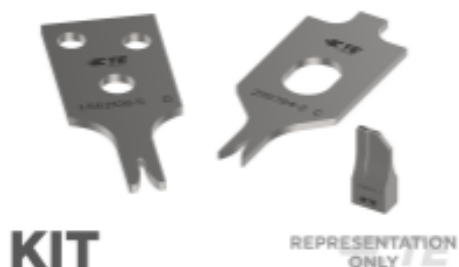
EU RoHS Directive 2011/65/EU	Compliant
EU ELV Directive 2000/53/EC	Compliant
China RoHS 2 Directive MIIT Order No 32, 2016	No Restricted Materials Above Threshold
EU REACH Regulation (EC) No. 1907/2006	Current ECHA Candidate List: JAN 2025 (247) Candidate List Declared Against: JAN 2025 (247) Does not contain REACH SVHC
Halogen Content	Low Halogen - Br, Cl, F, I < 900 ppm per homogenous material. Also BFR/CFR/PVC Free
Solder Process Capability	Not applicable for solder process capability

Product Compliance Disclaimer

This information is provided based on reasonable inquiry of our suppliers and represents our current actual knowledge based on the information they provided. This information is subject to change. The part numbers that TE has identified as EU RoHS compliant have a maximum concentration of 0.1% by weight in homogenous materials for lead, hexavalent chromium, mercury, PBB, PBDE, DBP, BBP, DEHP, DIBP, and 0.01% for cadmium, or qualify for an exemption to these limits as defined in the Annexes of Directive 2011/65/EU (RoHS2). Finished electrical and electronic equipment products will be CE marked as required by Directive 2011/65/EU. Components may not be CE marked. Additionally, the part numbers that TE has identified as EU ELV compliant have a maximum concentration of 0.1% by weight in homogenous materials for lead, hexavalent chromium, and mercury, and 0.01% for cadmium, or qualify for an exemption to these limits as defined in the Annexes of Directive 2000/53/EC (ELV). Regarding the REACH Regulation, the information TE provides on SVHC in articles for this part number is based on the latest European Chemicals Agency (ECHA) ‘Guidance on requirements for substances in articles’ posted at this URL: <https://echa.europa.eu/guidance-documents/guidance-on-reach>

Compatible Parts





KIT

REPRESENTATION ONLY

TE Part # 7-2151340-7
[OCEAN_2.0_SPARE_PART_KIT-110F180F](#)



TE Part # 1217836-1
[HEAVY DUTY BURNER CLIP ST](#)



TE Part # 1217841-1
[HEAVY DUTY BURNER CLIP ST](#)



TE Part # 2305570-1
[Strip Terminal Cutter-Side Feed-No Crimp](#)



TE Part # 2151340-2
[OCEAN-2.0-APPLICATOR-S-110F180F-RSA](#)



TE Part # 1969755-1
[CLIP, HEAVY DUTY BURNER CONNECTOR](#)



TE Part # 640751-1
[HEAVY DUTY BURNER CLIP ST](#)




TE Part # 640750-1
[HEAVY DUTY BURNER CLIP ST](#)




TE Part # 1969726-1
[2P HEAVY DUTY BURNER HSG](#)

Also in the Series | [Appliance Connectors](#)



[Crimp Terminal Housings\(1\)](#)



[Special Purpose Terminals\(10\)](#)

Customers Also Bought



TE Part #1742899-1
[187 FASTON,REC.,18-16 OR 2X18 AWG,NPST](#)



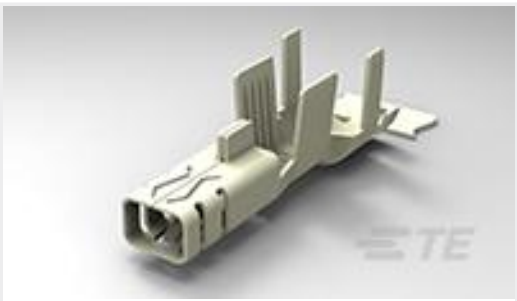
TE Part #1742198-1
[250 FASTON,REC.,18-14 AWG,NPST](#)



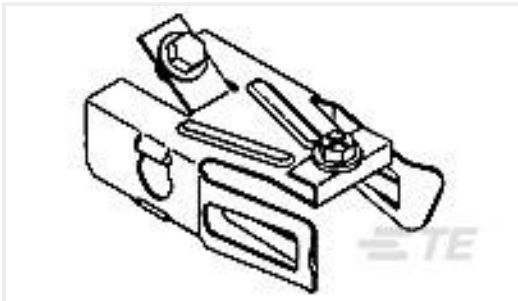
TE Part #1969726-1
[2P HEAVY DUTY BURNER HSG](#)



TE Part #1742594-1
[205 FASTON,REC.,18-14 AWG,NPST](#)



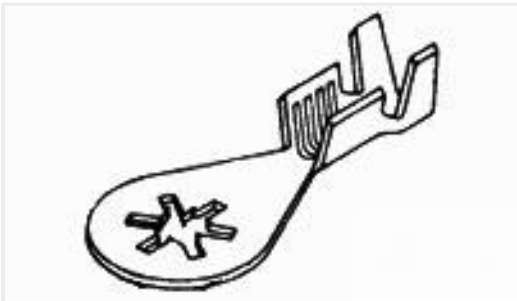
TE Part #1971781-2
PTL RECEPTACLE CONTACT, 14 AWG



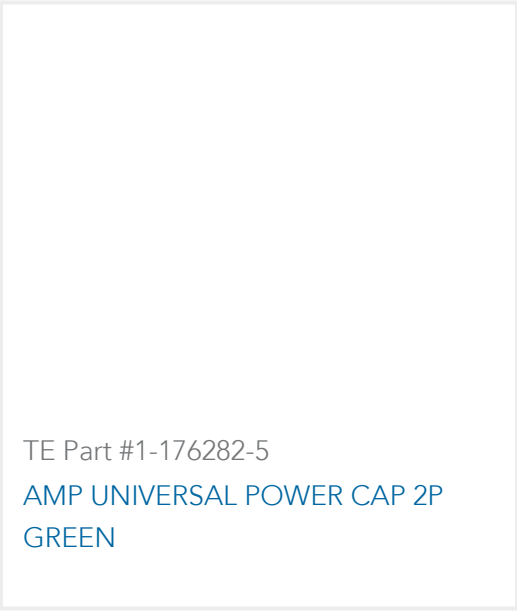
TE Part #1217841-1
HEAVY DUTY BURNER CLIP ST



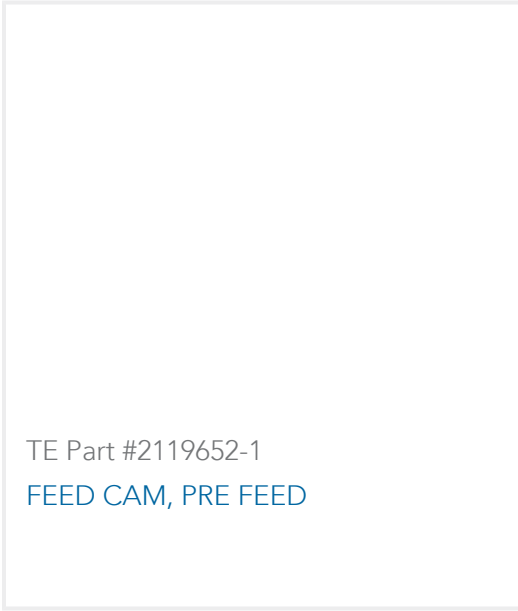
TE Part #521596-2
ULTRA-POD 187 ASSY REC 22-18
AWG TPBR



TE Part #61795-3
RING 18-14 AWG TPBR



TE Part #1-176282-5
AMP UNIVERSAL POWER CAP 2P
GREEN



TE Part #2119652-1
FEED CAM, PRE FEED

Documents

Product Drawings

HEAVY DUTY BURNER REC 18-14 AWG PHBRZ

English

CAD Files

Customer View Model

ENG_CVM_CVM_640748-7_AC.2d_dxf.zip

English

3D PDF

3D

Customer View Model

ENG_CVM_CVM_640748-7_AC.3d_igs.zip

English

Customer View Model

ENG_CVM_CVM_640748-7_AC.3d_stp.zip

English

By downloading the CAD file I accept and agree to the [Terms and Conditions](#) of use.

Product Specifications

Application Specification

English