



Connectors > PCB Connectors > Backplane Connectors > Eurocard Connectors



Connector & Housing Type: **Receptacle**  
Connector System: **Board-to-Board**  
Termination Post & Tail Length: **2.79 mm [.11 in]**  
Number of Positions: **96**  
Centerline (Pitch): **2.54 mm [.1 in]**

Features

Product Type Features

|                                   |                       |
|-----------------------------------|-----------------------|
| Connector & Housing Type          | Receptacle            |
| Connector System                  | Board-to-Board        |
| Connector & Contact Terminates To | Printed Circuit Board |
| DIN Size                          | Standard              |
| DIN Level                         | II                    |

Configuration Features

|                                      |             |
|--------------------------------------|-------------|
| Number of Power or Coaxial Positions | 96          |
| Number of Positions                  | 96          |
| Number of Rows                       | 3           |
| PCB Mount Orientation                | Right Angle |
| Number of Columns                    | 32          |
| Rows Loaded                          | A, B, C     |
| Number of Signal Positions           | 96          |

Electrical Characteristics



|                   |         |
|-------------------|---------|
| Operating Voltage | 250 VAC |
|-------------------|---------|

Body Features

|                       |      |
|-----------------------|------|
| Primary Product Color | Gray |
|-----------------------|------|

Contact Features

|   |                               |
|---|-------------------------------|
| PCB Contact Termination Area Plating Material Thickness | 2.54 – 5.08 µm[100 – 200 µin] |
| Contact Mating Area Plating Material                    | Gold (Au)                     |
| Contact Base Material                                   | Phosphor Bronze               |
| PCB Contact Termination Area Plating Material           | Tin-Lead                      |
| Contact Type  | Socket                        |
| Contact Mating Area Plating Material Thickness          | .76 µm[30 µin]                |
| Contact Current Rating (Max)                            | 1.5 A                         |

Termination Features

|                                |                       |
|--------------------------------|-----------------------|
| Termination Method to PCB      | Through Hole - Solder |
| Termination Post & Tail Length | 2.79 mm[.11 in]       |

Mechanical Attachment

|                          |              |
|--------------------------|--------------|
| Connector Mounting Type  | Board Mount  |
| PCB Mount Retention Type | Boardlock    |
| Mating Alignment Type    | Polarization |
| Mating Alignment         | With         |
| PCB Mount Alignment      | Without      |
| PCB Mount Retention      | With         |

Housing Features

|                    |                |
|--------------------|----------------|
| Housing Material   | Polyester GF   |
| Centerline (Pitch) | 2.54 mm[.1 in] |

Dimensions

|                             |                  |
|-----------------------------|------------------|
| PCB Thickness (Recommended) | 1.57 mm[.062 in] |
| Row-to-Row Spacing          | 2.54 mm[.1 in]   |

Usage Conditions

|                             |                            |
|-----------------------------|----------------------------|
| Operating Temperature Range | -55 – 105 °C[-67 – 221 °F] |
|-----------------------------|----------------------------|

Operation/Application

|                     |                |
|---------------------|----------------|
| Shielded            | No             |
| Circuit Application | Power & Signal |



Industry Standards

|                        |          |
|------------------------|----------|
| UL Flammability Rating | UL 94V-0 |
|------------------------|----------|

Packaging Features

|                  |     |
|------------------|-----|
| Packaging Method | Box |
|------------------|-----|

Product Compliance

For compliance documentation, visit the product page on TE.com>

|   |   |
|---|---|
| EU RoHS Directive 2011/65/EU                  | Not Compliant   |
| EU ELV Directive 2000/53/EC                   | Compliant with Exemptions   |
| China RoHS 2 Directive MIIT Order No 32, 2016 | Restricted Materials Above Threshold  |
| EU REACH Regulation (EC) No. 1907/2006        | Current ECHA Candidate List: JAN 2025 (247)<br>Candidate List Declared Against: JAN 2025 (247)<br>SVHC > Threshold:<br>Pb (13% in 4690948374)<br><b>Article Safe Usage Statements:</b><br>Do not eat, drink or smoke when using this product. Wash thoroughly after handling. Recycle if possible and dispose of the article by following all applicable governmental regulations relevant to your geographic location. |
| Halogen Content                               | Not Low Halogen - contains Br or Cl > 900 ppm.  |
| Solder Process Capability                     | Wave solder capable to 240°C  |

Product Compliance Disclaimer

This information is provided based on reasonable inquiry of our suppliers and represents our current actual knowledge based on the information they provided. This information is subject to change. The part numbers that TE has identified as EU RoHS compliant have a maximum concentration of 0.1% by weight in homogenous materials for lead, hexavalent chromium, mercury, PBB, PBDE, DBP, BBP, DEHP, DIBP, and 0.01% for cadmium, or qualify for an exemption to these limits as defined in the Annexes of Directive 2011/65/EU (RoHS2). Finished electrical and electronic equipment products will be CE marked as required by Directive 2011/65/EU. Components may not be CE marked. Additionally, the part numbers that TE has identified as EU ELV compliant have a maximum concentration of 0.1% by weight in homogenous materials for lead, hexavalent chromium, and mercury, and 0.01% for cadmium, or qualify for an exemption to these limits as defined in the Annexes of Directive 2000/53/EC (ELV). Regarding the REACH Regulation, the information TE provides on SVHC in articles for this part number is based on the latest European Chemicals Agency (ECHA) ‘Guidance on requirements for substances in articles’ posted at this URL: <https://echa.europa.eu/guidance-documents/guidance-on-reach>

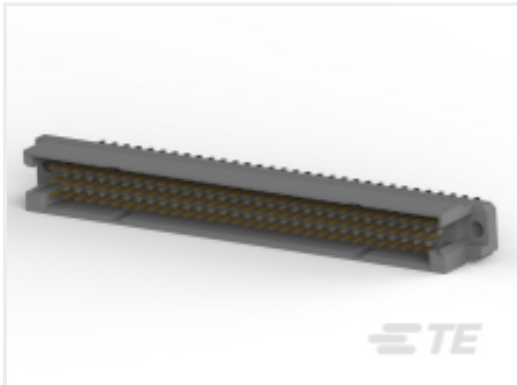
Compatible Parts



TE Part # 5650461-4  
ASSY,RECEPTACLE,EUROCARD,TYPE



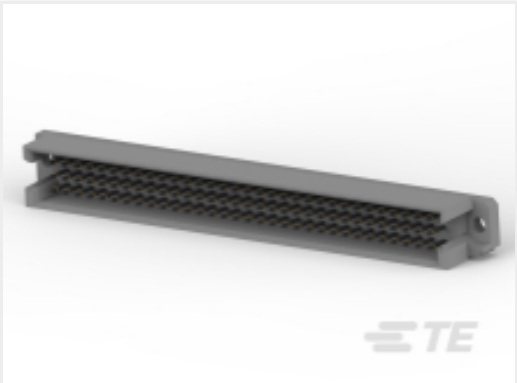
TE Part # 5650895-4  
ASSY,RECEPT,EUROCARD,TYPE R,LE



TE Part # 650889-5  
096 EURO TYPE R PIN AP ASSY



TE Part # 650470-5  
096 EURO TYPE R PIN ST ASSY



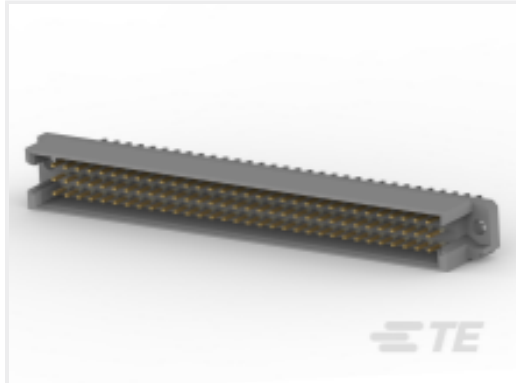
TE Part # 5650908-5  
ASSY,PIN,EUROCARD,TYPE R,LEAD-



TE Part # 650908-5  
096 EURO TYPE R PIN ST ASSY



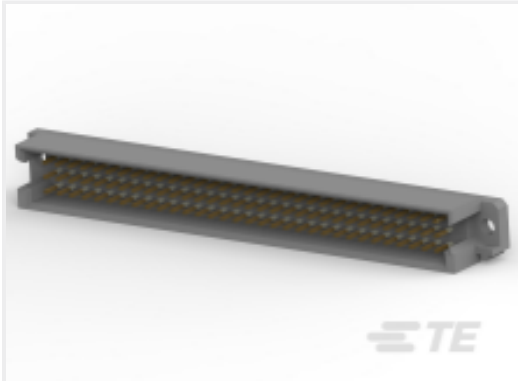
TE Part # 4-1393659-5  
V42254B1202R960=PC612 MESSERLE



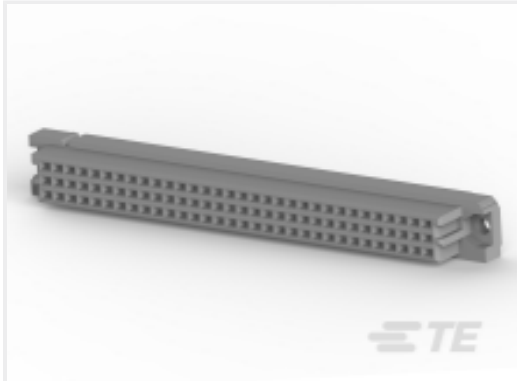
TE Part # 5650889-5  
ASSY,PIN,EUROCARD,TYPE R,LEAD-



TE Part # 5148292-5  
ASSY,RECEPTACLE,EUROCARD,TYPE



TE Part # 5650470-5  
ASSY,PIN,EUROCARD,TYPE R,LEAD-



TE Part # 535032-4  
096 EURO TYPE C RECEPT AP ASSY

Also in the Series | Eurocard Type R



Eurocard Connectors(79)

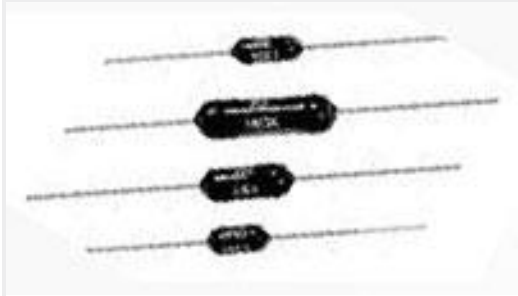


Standard Edge Connectors(1)

Customers Also Bought



TE Part #103635-1  
02 MTE HDR SRRA LATCH .100CL



TE Part #2-1879665-1  
H8 20K 0.1% 15PPM



TE Part #3-1718324-1  
1.5/2.8MM TAB HSG.,62POS.,ASSY



TE Part #6450378-9  
MBXL R/A RCT,A/C PASS THRU  
3ACP+4P+24S





TE Part #1-2287970-5  
8POS, MCON 1.2 LL REC SEALED  
2ROW



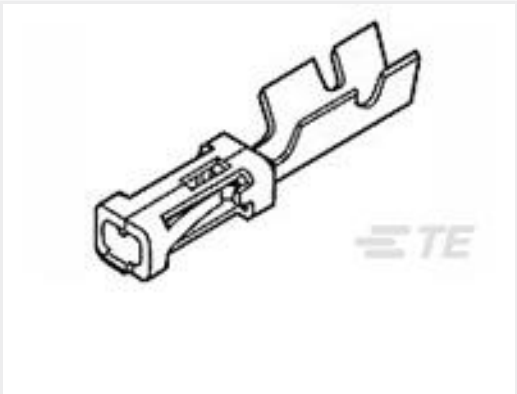
TE Part #60598-1  
058 PIN REC IS 22-20 010PTPHBZ



TE Part #776434-3  
AS16,CAP ASSY,ST,06P,N SEAL,CODE  
C



TE Part #DT6P-DC  
PROTECT CVR, 6P, REC, GRY, DT  
C



TE Part #167418-1  
MOD-4 REC.CONT.SCP.



TE Part #2-1393310-0  
26A1348C=TERMINAL,CRMP,QC.250,

Documents

Product Drawings

096 EURO TYPE R RECEPT BL ASSY

English

CAD Files

3D PDF

3D

Customer View Model

ENG\_CVM\_CVM\_650895-5\_AD.2d\_dxf.zip

English

Customer View Model

ENG\_CVM\_CVM\_650895-5\_AD.3d\_igs.zip

English

Customer View Model

ENG\_CVM\_CVM\_650895-5\_AD.3d\_stp.zip

English

By downloading the CAD file I accept and agree to the [Terms and Conditions](#) of use.

Product Specifications

Application Specification

English

Agency Approvals

UL

English