



Application Tooling > Hand Crimping Tools



Tool Grade: **Service Tooling**

Power Technology Type: **Manual**

Tooling Type: **Hand Tool**

Features

Other

Crimp Form-Wire Barrel Type	Insulation Displacement
Tool Grade	Service Tooling
Power Technology Type	Manual
Tooling Type	Hand Tool

Product Compliance

For compliance documentation, visit the product page on TE.com>

EU RoHS Directive 2011/65/EU	Compliant
EU ELV Directive 2000/53/EC	Out of Scope
China RoHS 2 Directive MIIT Order No 32, 2016	No Restricted Materials Above Threshold
EU REACH Regulation (EC) No. 1907/2006	Current ECHA Candidate List: JAN 2025 (247) Candidate List Declared Against: JUNE 2022 (224) Does not contain REACH SVHC
Halogen Content	Low Halogen - Br, Cl, F, I < 900 ppm per homogenous material. Also BFR/CFR/PVC Free
Solder Process Capability	Not applicable for solder process capability

Product Compliance Disclaimer

This information is provided based on reasonable inquiry of our suppliers and represents our current actual knowledge based on the information they provided. This information is subject to change. The part numbers that TE has identified as EU RoHS compliant have a maximum concentration of 0.1% by weight in homogenous materials for lead, hexavalent chromium, mercury, PBB, PBDE, DBP, BBP, DEHP, DIBP, and 0.01% for cadmium, or qualify for an exemption to these



limits as defined in the Annexes of Directive 2011/65/EU (RoHS2). Finished electrical and electronic equipment products will be CE marked as required by Directive 2011/65/EU. Components may not be CE marked. Additionally, the part numbers that TE has identified as EU ELV compliant have a maximum concentration of 0.1% by weight in homogenous materials for lead, hexavalent chromium, and mercury, and 0.01% for cadmium, or qualify for an exemption to these limits as defined in the Annexes of Directive 2000/53/EC (ELV). Regarding the REACH Regulation, the information TE provides on SVHC in articles for this part number is based on the latest European Chemicals Agency (ECHA) 'Guidance on requirements for substances in articles' posted at this URL: <https://echa.europa.eu/guidance-documents/guidance-on-reach>

Compatible Parts

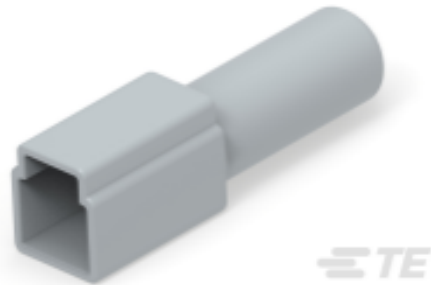


TE Part # 654633-1  
TWIN MANDREL

Customers Also Bought



TE Part #DT04-2P-CE03  
REC, 2P, BLK, E, CAP



TE Part #DT2S-BT  
BOOT, 2P, PLG, ST, GRY



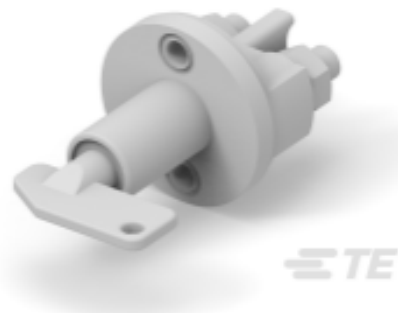
TE Part #K1012888  
Relay 26-72-01



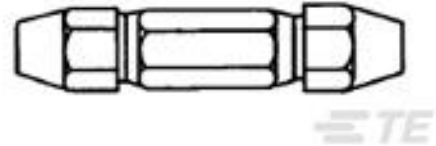
TE Part #1624176-1  
27E DUAL 10KA 6.35X50FL



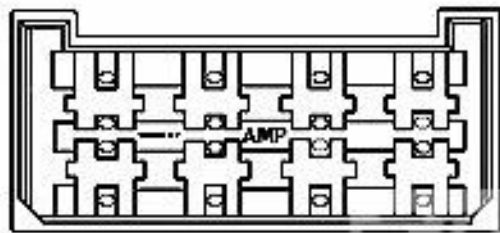
TE Part #K1166376  
Switch lever 3 DF VK-Teil 35-500-075



TE Part #K1147099  
Battery Disconnecter 35-210-100-GN



TE Part #2-330854-5  
MAXI T.P. CLIP



TE Part #280099  
FF 250 TAB HSG 8P NYLON CLEAR



TE Part #654633-1  
TWIN MANDREL

TE Part #014373-E  
VORCSI TMC-EINSETZ -  
LOESEWERKZEUG J 1 0

Documents



Product Drawings

SERVICE TOOL MAXI TERMI POINT

German

Product Specifications

Product Specification

Maxi TERMI-POINT Clip .031 x .093

English

Product Specification

English

Instruction Sheets

OPERATOR'S QUALITY CHECK PROCEDURE FOR AMP TERMI-POINT CLIP APPLICAT

English

Instruction Sheet (U.S.)

English