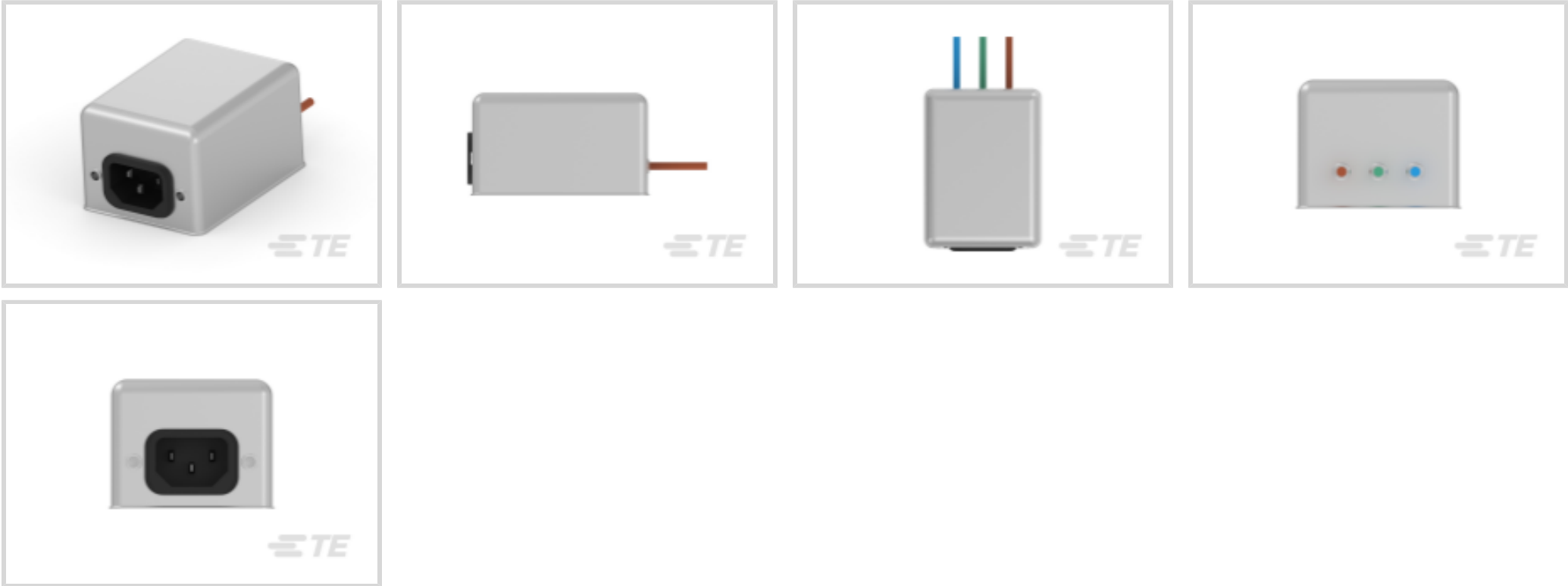




EMI & EMC Solutions > EMI Filters > Power Line Filters > Single Phase Filters > Single Phase Filters, Corcom Q Series



Current Rating: 3 A

Input Termination Type: IEC

Output Termination Type: Wire Lead

Leakage Current (Max) (120VAC, 60Hz): .29 mA

Leakage Current (Max) (250VAC, 50Hz): .38 mA

[All Single Phase Filters, Corcom Q Series \(14\)](#)

Features

Product Type Features

Filtering Requirements	Filtered
Ground Choke Option	No
Input Termination Type	IEC
Output Termination Type	Wire Lead

Electrical Characteristics

Current Rating	3 A
Leakage Current (Max) (120VAC, 60Hz)	.29 mA
Leakage Current (Max) (250VAC, 50Hz)	.38 mA
Operating Voltage	250 VAC

Mechanical Attachment

Panel Mount Feature Type	Flange
--------------------------	--------

Usage Conditions

Operating Temperature Range	-10 – 40 °C
-----------------------------	-------------



Product Compliance

For compliance documentation, visit the product page on TE.com>

EU RoHS Directive 2011/65/EU	Compliant with Exemptions
EU ELV Directive 2000/53/EC	Not Yet Reviewed
China RoHS 2 Directive MIIT Order No 32, 2016	Restricted Materials Above Threshold
EU REACH Regulation (EC) No. 1907/2006	Current ECHA Candidate List: JAN 2025 (247) Candidate List Declared Against: JAN 2025 (247) SVHC > Threshold: Pb (3.2% in M-16609-1) <b>Article Safe Usage Statements:</b> Do not eat, drink or smoke when using this product. Wash thoroughly after handling. Recycle if possible and dispose of the article by following all applicable governmental regulations relevant to your geographic location.
Halogen Content	Not Low Halogen - contains Br or Cl > 900 ppm.
Solder Process Capability	Not applicable for solder process capability

Product Compliance Disclaimer

This information is provided based on reasonable inquiry of our suppliers and represents our current actual knowledge based on the information they provided. This information is subject to change. The part numbers that TE has identified as EU RoHS compliant have a maximum concentration of 0.1% by weight in homogenous materials for lead, hexavalent chromium, mercury, PBB, PBDE, DBP, BBP, DEHP, DIBP, and 0.01% for cadmium, or qualify for an exemption to these limits as defined in the Annexes of Directive 2011/65/EU (RoHS2). Finished electrical and electronic equipment products will be CE marked as required by Directive 2011/65/EU. Components may not be CE marked. Additionally, the part numbers that TE has identified as EU ELV compliant have a maximum concentration of 0.1% by weight in homogenous materials for lead, hexavalent chromium, and mercury, and 0.01% for cadmium, or qualify for an exemption to these limits as defined in the Annexes of Directive 2000/53/EC (ELV). Regarding the REACH Regulation, the information TE provides on SVHC in articles for this part number is based on the latest European Chemicals Agency (ECHA) ‘Guidance on requirements for substances in articles’ posted at this URL: <https://echa.europa.eu/guidance-documents/guidance-on-reach>

Compatible Parts



TE Part # CAT-C8114-T1  
[Single Phase Filters, Corcom T Series](#)

Also in the Series | Corcom Q



Single Phase Filters(14)

Customers Also Bought



TE Part #1-5499141-2  
A/L UNIV HDR 64P RA LAT



TE Part #5749180-1  
Mini DIN, 6 pos, R/A, Shield



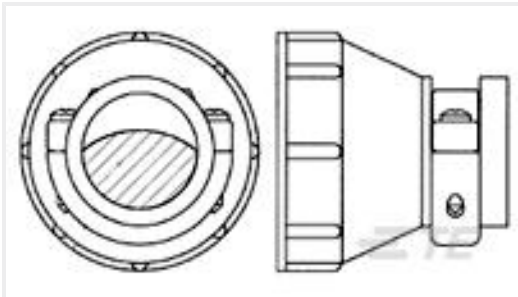
TE Part #5-683453-4  
CRIMPER, INSULATION "F"



TE Part #2-1437624-3  
PKB70B1/4=KNOB PLASTIC W/SKIRT



TE Part #8-33465-2  
TERMINAL,SOLIS R 6 1/4



TE Part #182928-1  
CPC Cable Clamp Kit, Size 11, Large, UV



TE Part #3-640428-2  
02P MTA156 CONN ASSY 22AWG RED



TE Part #206061-1  
RECPT, SZ 11-4, CPC



TE Part #CAT-C8114-Q1  
Single Phase Filters, Corcom Q Series

Documents

Product Drawings

3EQ8=F7260 S0

English

CAD Files

Customer View Model

ENG\_CVM\_CVM\_6609048-3\_N1.3d\_igs.zip

English

Customer View Model



[ENG\\_CVM\\_CVM\\_6609048-3\\_N1.3d\\_stp.zip](#)

English

**Customer View Model**

[ENG\\_CVM\\_CVM\\_6609048-3\\_N1.2d\\_dxf.zip](#)

English

**3D PDF**

3D

By downloading the CAD file I accept and agree to the [Terms and Conditions](#) of use.

**Datasheets & Catalog Pages**

[1654001\\_CORCOM\\_PRODUCT\\_GUIDE\\_Q\\_SERIES](#)

English

**Corcom Combined Selector Charts**

English

[1-1654250-1\\_CORCOM\\_EMI\\_RFI\\_QRG](#)

English