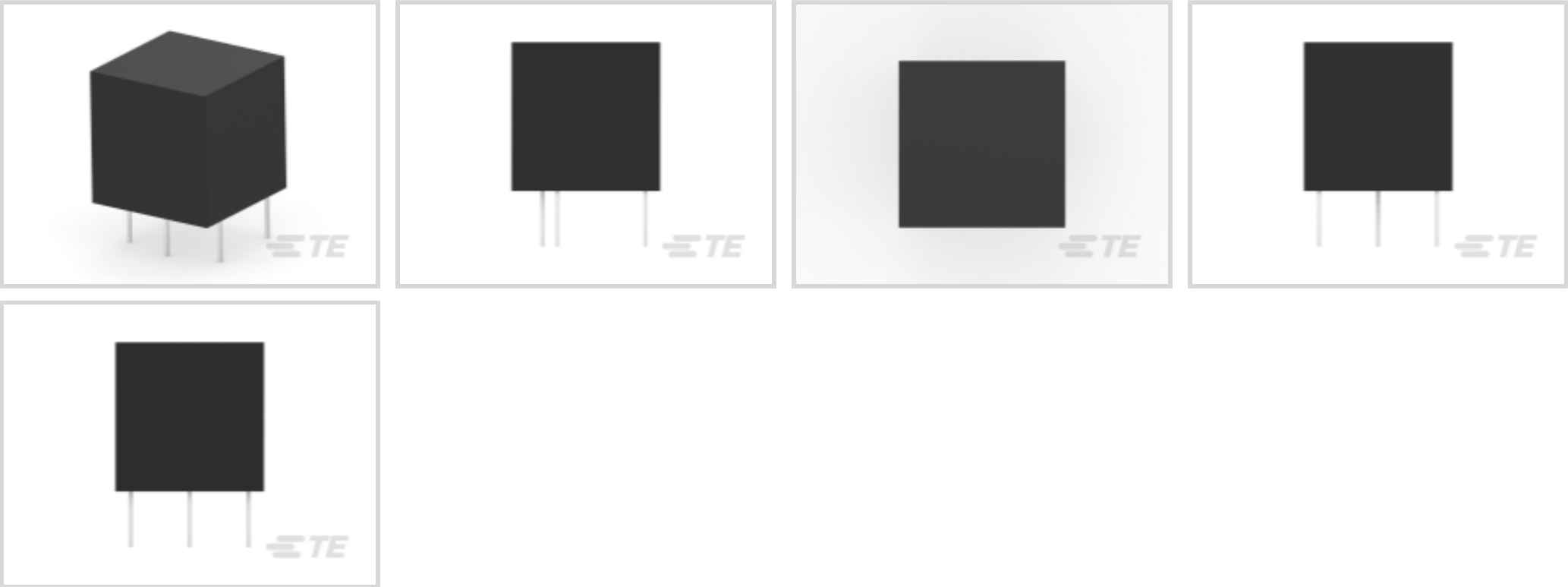




EMI & EMC Solutions > EMI Filters > Power Line Filters > Single Phase Filters



Current Rating: **3 A**
Input Termination Type: **PCB Pin**
Output Termination Type: **PCB Pins .025" Square**
Leakage Current (Max) (120VAC, 60Hz): **.13 mA**
Leakage Current (Max) (250VAC, 50Hz): **.21 mA**

Features

Product Type Features

Filtering Requirements	Filtered
Ground Choke Option	No
Input Termination Type	PCB Pin
Output Termination Type	PCB Pins .025" Square

Electrical Characteristics

Current Rating	3 A
Leakage Current (Max) (120VAC, 60Hz)	.13 mA
Leakage Current (Max) (250VAC, 50Hz)	.21 mA
Operating Voltage	250 VAC

Mechanical Attachment

Product Mount Type	Board Mount
--------------------	-------------

Usage Conditions

Operating Temperature Range	-10 – 40 °C
-----------------------------	-------------



Product Compliance

For compliance documentation, visit the product page on TE.com>

EU RoHS Directive 2011/65/EU	Compliant
EU ELV Directive 2000/53/EC	Compliant
China RoHS 2 Directive MIIT Order No 32, 2016	No Restricted Materials Above Threshold
EU REACH Regulation (EC) No. 1907/2006	Current ECHA Candidate List: JAN 2025 (247) Candidate List Declared Against: JAN 2025 (247) SVHC > Threshold: Triphenyl phosphate (TPP) (1.3% in 4921507) Article Safe Usage Statements: Wash thoroughly after handling. Do not handle until all safety precautions have been read and understood. Recycle if possible and dispose of the article by following all applicable governmental regulations relevant to your geographic location.
Halogen Content	Not Low Halogen - contains Br or Cl > 900 ppm.
Solder Process Capability	Not reviewed for solder process capability

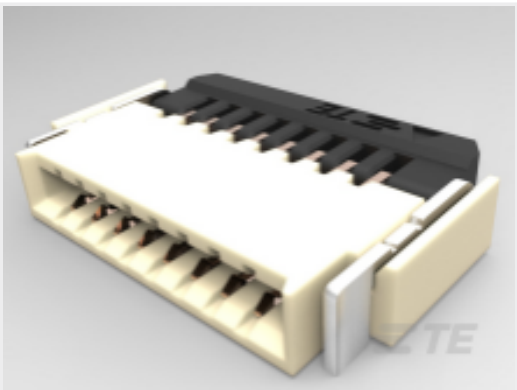
Product Compliance Disclaimer

This information is provided based on reasonable inquiry of our suppliers and represents our current actual knowledge based on the information they provided. This information is subject to change. The part numbers that TE has identified as EU RoHS compliant have a maximum concentration of 0.1% by weight in homogenous materials for lead, hexavalent chromium, mercury, PBB, PBDE, DBP, BBP, DEHP, DIBP, and 0.01% for cadmium, or qualify for an exemption to these limits as defined in the Annexes of Directive 2011/65/EU (RoHS2). Finished electrical and electronic equipment products will be CE marked as required by Directive 2011/65/EU. Components may not be CE marked. Additionally, the part numbers that TE has identified as EU ELV compliant have a maximum concentration of 0.1% by weight in homogenous materials for lead, hexavalent chromium, and mercury, and 0.01% for cadmium, or qualify for an exemption to these limits as defined in the Annexes of Directive 2000/53/EC (ELV). Regarding the REACH Regulation, the information TE provides on SVHC in articles for this part number is based on the latest European Chemicals Agency (ECHA) ‘Guidance on requirements for substances in articles’ posted at this URL: <https://echa.europa.eu/guidance-documents/guidance-on-reach>

Compatible Parts



Customers Also Bought



TE Part #2328702-8
8PIN 0.5MMMP FPC CONNECTOR,
BACK FLIP LOCK



TE Part #4-1879021-1
SMW3 4R7 5%



TE Part #828920-1
EINZELADERDICHUNG



TE Part #1612335-1
GRACE INERTIA 3.5 TAB CONTACT
(M)



TE Part #794617-8
8POS,MICRO MNL,RCPT HSG



TE Part #350551-7
UMNL SOK 20-14 AU/BR L/P



TE Part #350547-2
UMNL PIN 20-14 AUBR L/P



TE Part #350923-6
UMNL SOK 12-10 AUNI/PHBZ



TE Part #6-1625892-0
3W SM M/OX 5% 56R

Documents

CAD Files

3D PDF

3D

Customer View Model

ENG_CVM_CVM_6609063-2_C.2d_dxf.zip

English

Customer View Model

ENG_CVM_CVM_6609063-2_C.3d_igs.zip

English

Customer View Model

ENG_CVM_CVM_6609063-2_C.3d_stp.zip

English

By downloading the CAD file I accept and agree to the [Terms and Conditions](#) of use.

Datasheets & Catalog Pages

1654001_Corcom_Product_Guide_EBP_EDP_EOP

English

Corcom Combined Selector Charts

English



1-1654250-1_CORCOM_EMI_RFI_QRG

English