



EMI & EMC Solutions > EMI Filters > Power Line Filters > 3-Phase Filters > 3 Phase Filters, Corcom AYP Series



Current Rating: 20 A

Input Termination Type: Stud

Output Termination Type: Stud

Wiring Configuration: WYE (4 wire + ground)

Operating Voltage: 440 VAC

[All 3 Phase Filters, Corcom AYP Series \(0\)](#)

Features

Product Type Features

Filtering Requirements	Filtered
Input Termination Type	Stud
Output Termination Type	Stud

Configuration Features

Wiring Configuration	WYE (4 wire + ground)
----------------------	-----------------------

Electrical Characteristics

Leakage Current (Max) (250VAC, 50Hz)	3.4 mA
Current Rating	20 A
Operating Voltage	440 VAC

Mechanical Attachment

Product Mount Type	Chassis Mount
--------------------	---------------

Product Compliance

[For compliance documentation, visit the product page on TE.com>](#)

EU RoHS Directive 2011/65/EU	Compliant
EU ELV Directive 2000/53/EC	Compliant
China RoHS 2 Directive MIIT Order No 32, 2016	No Restricted Materials Above Threshold



EU REACH Regulation (EC) No. 1907/2006

Current ECHA Candidate List: JAN 2025  
(247)  
Candidate List Declared Against: JUNE  
2024 (241)  
SVHC > Threshold:  
TBBPA (4.36% in Component Part)

Article Safe Usage Statements:  
Do not eat, drink or smoke when using this product. Wash thoroughly after  
handling. Recycle if possible and dispose of the article by following all applicable  
governmental regulations relevant to your geographic location.

Halogen Content

Not Low Halogen - contains Br or Cl > 900  
ppm.

Solder Process Capability

Not applicable for solder process capability

Product Compliance Disclaimer

This information is provided based on reasonable inquiry of our suppliers and represents our current actual knowledge based on the information they provided. This information is subject to change. The part numbers that TE has identified as EU RoHS compliant have a maximum concentration of 0.1% by weight in homogenous materials for lead, hexavalent chromium, mercury, PBB, PBDE, DBP, BBP, DEHP, DIBP, and 0.01% for cadmium, or qualify for an exemption to these limits as defined in the Annexes of Directive 2011/65/EU (RoHS2). Finished electrical and electronic equipment products will be CE marked as required by Directive 2011/65/EU. Components may not be CE marked. Additionally, the part numbers that TE has identified as EU ELV compliant have a maximum concentration of 0.1% by weight in homogenous materials for lead, hexavalent chromium, and mercury, and 0.01% for cadmium, or qualify for an exemption to these limits as defined in the Annexes of Directive 2000/53/EC (ELV). Regarding the REACH Regulation, the information TE provides on SVHC in articles for this part number is based on the latest European Chemicals Agency (ECHA) ‘Guidance on requirements for substances in articles’ posted at this URL: <https://echa.europa.eu/guidance-documents/guidance-on-reach>

Compatible Parts



TE Part # CAT-C8114-A11  
EMI Filter Accessories, Corcom A Series



TE Part # CAT-C8114-AY61  
3 Phase Filters, Corcom AYO Series

Also in the Series

Customers Also Bought



TE Part #206485-1  
CPC PLUG ASSEMBLY SIZE 11-9



TE Part #206429-1  
CPC PLUG ASSY, 11-4, REV SEX



TE Part #5-747904-2  
9 Plug Solder Cup, Gold Flash,



TE Part #66602-2  
III+ PIN,18-14,30AU/FL,LP



TE Part #549865-000  
CWT-1502



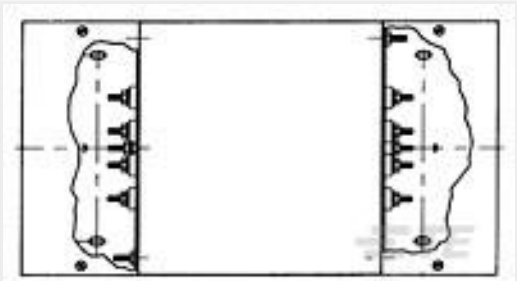
TE Part #206486-1  
CPC RECPT ASSEMBLY SIZE 11-9



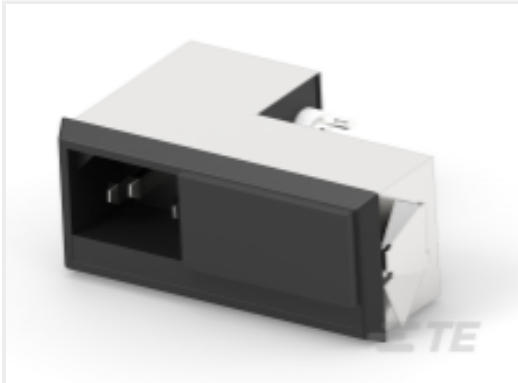
TE Part #324050  
TERMINAL,T-N R 4 1/4



TE Part #8-328394-1  
PIDG SPD 22-16COMM 22-18MIL 2



TE Part #1609080-8  
AA407 ENDBELL KIT 4=F6954



TE Part #6609125-1  
6J4 M0=F7657

Documents

Product Drawings

20AYP6C J0=F7470

English

CAD Files

3D PDF

3D

Customer View Model

ENG\_CVM\_CVM\_6609072-1\_H.2d\_dxf.zip

English

Customer View Model

ENG\_CVM\_CVM\_6609072-1\_H.3d\_igs.zip

English

Customer View Model

ENG\_CVM\_CVM\_6609072-1\_H.3d\_stp.zip

English

By downloading the CAD file I accept and agree to the [Terms and Conditions](#) of use.

Datasheets & Catalog Pages

1654001\_Corcom\_Product\_Guide\_A\_Series

English

Corcom Combined Selector Charts

English

1-1654250-1\_CORCOM\_EMI\_RFI\_QRG

English