



Product Compliance

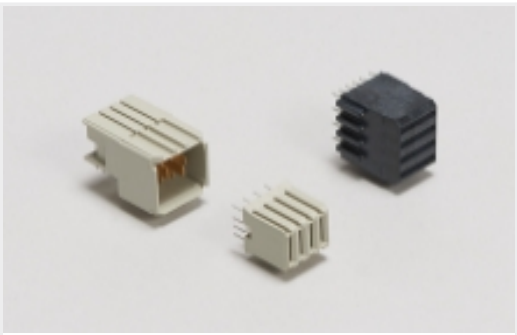
[For compliance documentation, visit the product page on TE.com>](#)

EU RoHS Directive 2011/65/EU	Not Yet Reviewed
EU ELV Directive 2000/53/EC	Compliant with Exemptions
China RoHS 2 Directive MIIT Order No 32, 2016	Restricted Materials Above Threshold
EU REACH Regulation (EC) No. 1907/2006	Current ECHA Candidate List: JAN 2025 (247) Candidate List Declared Against: JUN 2012 (84) SVHC > Threshold: Not Yet Reviewed
Halogen Content	Not Yet Reviewed for halogen content
Solder Process Capability	Wave solder capable to 265°C

Product Compliance Disclaimer

This information is provided based on reasonable inquiry of our suppliers and represents our current actual knowledge based on the information they provided. This information is subject to change. The part numbers that TE has identified as EU RoHS compliant have a maximum concentration of 0.1% by weight in homogenous materials for lead, hexavalent chromium, mercury, PBB, PBDE, DBP, BBP, DEHP, DIBP, and 0.01% for cadmium, or qualify for an exemption to these limits as defined in the Annexes of Directive 2011/65/EU (RoHS2). Finished electrical and electronic equipment products will be CE marked as required by Directive 2011/65/EU. Components may not be CE marked. Additionally, the part numbers that TE has identified as EU ELV compliant have a maximum concentration of 0.1% by weight in homogenous materials for lead, hexavalent chromium, and mercury, and 0.01% for cadmium, or qualify for an exemption to these limits as defined in the Annexes of Directive 2000/53/EC (ELV). Regarding the REACH Regulations, TE’s information on SVHC in articles for this part number is still based on the European Chemical Agency (ECHA) ‘Guidance on requirements for substances in articles’(Version: 2, April 2011), applying the 0.1% weight on weight concentration threshold at the finished product level. TE is aware of the European Court of Justice ruling of September 10th, 2015 also known as O5A (Once An Article Always An Article) stating that, in case of ‘complex object’, the threshold for a SVHC must be applied to both the product as a whole and simultaneously to each of the articles forming part of its composition. TE has evaluated this ruling based on the new ECHA “Guidance on requirements for substances in articles” (June 2017, version 4.0) and will be updating its statements accordingly.

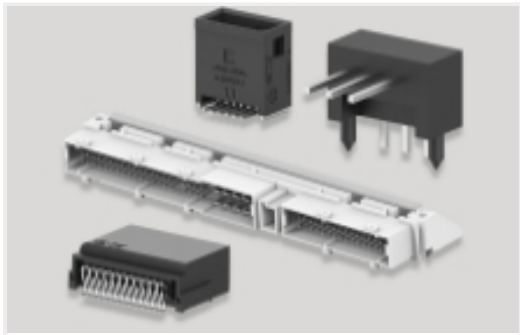
Also in the Series | ICCON



Backplane Power Connectors(2)



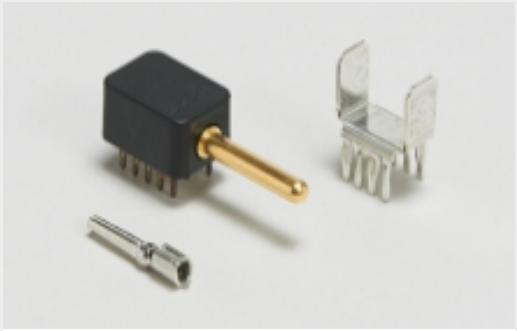
Connector Contacts(2)



PCB Headers & Receptacles(8)



Power Contacts(2)



Power Terminals(3)



Rectangular Power Connectors(8)

Customers Also Bought



TE Part #6643431-1
ICCON,PIN,ASSY



TE Part #1-1986712-2
SCREWLESS, SW,12P,5.08 PCB



TE Part #6643432-1
ICCON,PIN,ASSY



TE Part #6643269-1
ICCON,SKT,ASSY



TE Part #6643433-1
ICCON,PIN,ASSY



TE Part #6643232-1
ICCON,SKT,ASSY



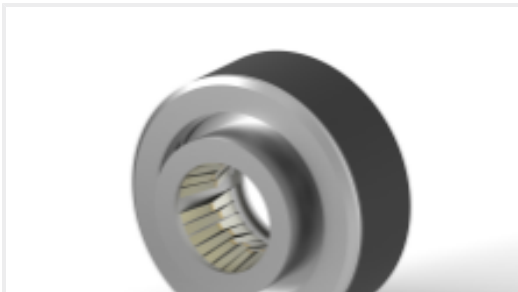
TE Part #6643220-1
SLIMLINE,ICCON,SKT,ASSY



TE Part #6643228-1
SLIMLINE,ICCON,PIN,ASSY



TE Part #6643274-1
ICCON,PIN,ASSY



TE Part #2361483-1
ICCON INSERT SIZE 8.0mm SOCKET
FLOAT SMT

Documents



Product Drawings

ICCON,PIN,ASSY

English

CAD Files

3D PDF

3D

Customer View Model

ENG_CVM_CVM_6643271-1_A.2d_dxf.zip

English

Customer View Model

ENG_CVM_CVM_6643271-1_A.3d_igs.zip

English

Customer View Model

ENG_CVM_CVM_6643271-1_A.3d_stp.zip

English

By downloading the CAD file I accept and agree to the [Terms and Conditions](#) of use.

Datasheets & Catalog Pages

POWER_CONNECTORS_CATALOG_SEC01_BOARD_TO_BOARD

English

2_PIECE_POWER_CONNECTORS_qrg_4-1773458-1

English

Product Specifications

Application Specification

English