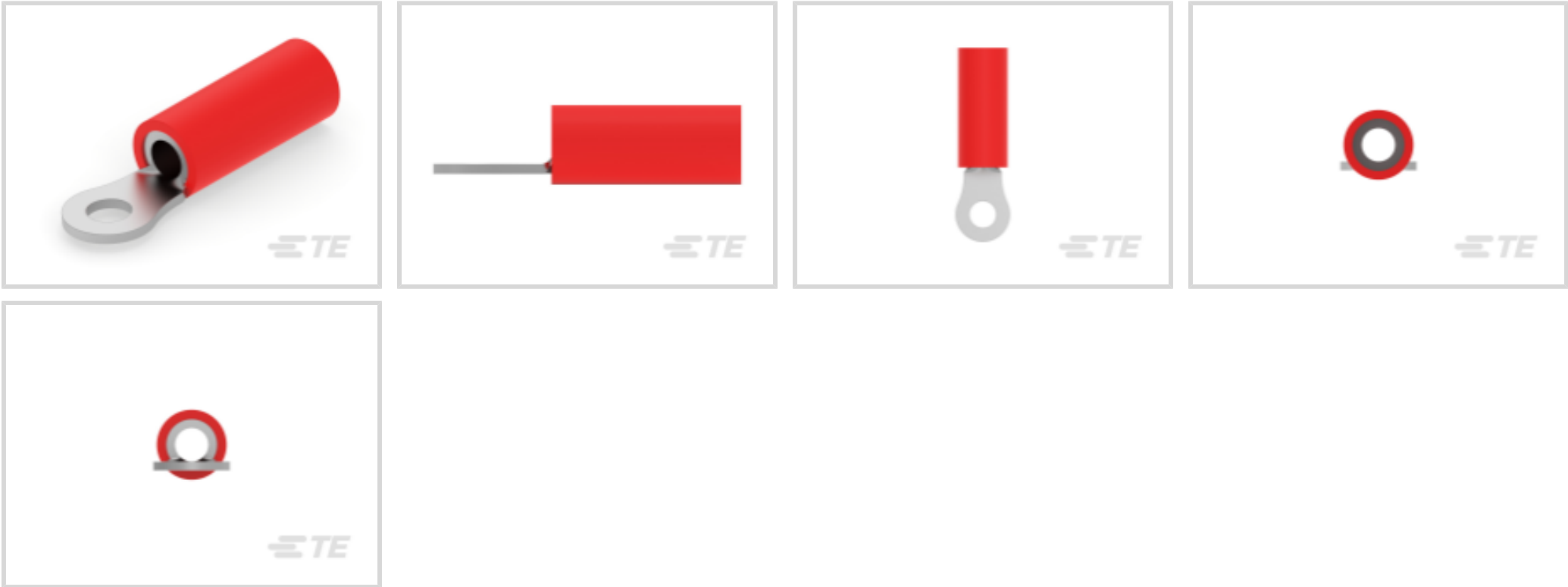




Terminals & Splices > Ring Terminals



Ring Terminal Product Type: Closed Ring Tongue Terminal

Wire Size: 13100 – 20800 CMA

Stud Size: #10

Features

Product Type Features

| | |
|--|-----------------------------|
| Terminal Features | Heavy Duty |
| Ring Terminal Product Type | Closed Ring Tongue Terminal |
| Stud Size | #10 |
| Sealable | No |
| Wire Insulation Support Retention Type | Insulation Support |

Configuration Features

| | |
|-----------------|---|
| Number of Holes | 1 |
|-----------------|---|

Electrical Characteristics

| | |
|----------------|-------|
| Voltage Rating | 600 V |
|----------------|-------|

Body Features

| | |
|-------------------------|-------|
| Product Weight | 4.5 g |
| Insulation Sleeve Color | Red |
| Stripe Color | Red |

Contact Features

| | |
|-------------|--------|
| Barrel Type | Closed |
|-------------|--------|



| | |
|---------------------------|----------|
| Terminal Orientation | Straight |
| Terminal Plating Material | Tin |

Mechanical Attachment

| | |
|-------------------------|------|
| Wire Insulation Support | With |
|-------------------------|------|

Dimensions

| | |
|--------------------------------------|-------------------|
| Wire Size | 13100 – 20800 CMA |
| Stud Diameter | 5 mm[.197 in] |
| Tongue Thickness | 1.22 mm[.048 in] |
| Product Length | 35.31 mm[1.39 in] |
| Compatible Insulation Diameter (Max) | 9.14 mm[.36 in] |
| Compatible Insulation Diameter Range | 9.14 mm[.36 in] |

Usage Conditions

| | |
|-------------------|---------------------|
| Insulation Option | Partially Insulated |
|-------------------|---------------------|

Operation/Application

| | |
|---------------------------------------|--------|
| Compatible With Wire Base Material | Copper |
| Compatible With Wire Plating Material | Tin |

Industry Standards

| | |
|-------------------------------|----|
| Government Qualified Terminal | No |
|-------------------------------|----|

Packaging Features

| | |
|--------------------|--------------|
| Packaging Quantity | 500 |
| Packaging Method | Tape Mounted |

Product Compliance

For compliance documentation, visit the product page on TE.com>

| | |
|---|--|
| EU RoHS Directive 2011/65/EU | Compliant |
| EU ELV Directive 2000/53/EC | Compliant |
| China RoHS 2 Directive MIIT Order No 32, 2016 | No Restricted Materials Above Threshold |
| EU REACH Regulation (EC) No. 1907/2006 | Current ECHA Candidate List: JAN 2025 (247) Candidate List Declared Against: JUNE 2024 (241) Does not contain REACH SVHC |
| Halogen Content | Not Low Halogen - contains Br or Cl > 900 ppm. |



Solder Process Capability

Not applicable for solder process capability

Product Compliance Disclaimer

This information is provided based on reasonable inquiry of our suppliers and represents our current actual knowledge based on the information they provided. This information is subject to change. The part numbers that TE has identified as EU RoHS compliant have a maximum concentration of 0.1% by weight in homogenous materials for lead, hexavalent chromium, mercury, PBB, PBDE, DBP, BBP, DEHP, DIBP, and 0.01% for cadmium, or qualify for an exemption to these limits as defined in the Annexes of Directive 2011/65/EU (RoHS2). Finished electrical and electronic equipment products will be CE marked as required by Directive 2011/65/EU. Components may not be CE marked. Additionally, the part numbers that TE has identified as EU ELV compliant have a maximum concentration of 0.1% by weight in homogenous materials for lead, hexavalent chromium, and mercury, and 0.01% for cadmium, or qualify for an exemption to these limits as defined in the Annexes of Directive 2000/53/EC (ELV). Regarding the REACH Regulation, the information TE provides on SVHC in articles for this part number is based on the latest European Chemicals Agency (ECHA) 'Guidance on requirements for substances in articles' posted at this URL: <https://echa.europa.eu/guidance-documents/guidance-on-reach>

Compatible Parts



TE Part # 1490534-1
HYP10 PLASTI-GRIP 8AWG DIE SET




TE Part # 601129-2
HAND TOOL (A.S.I.)

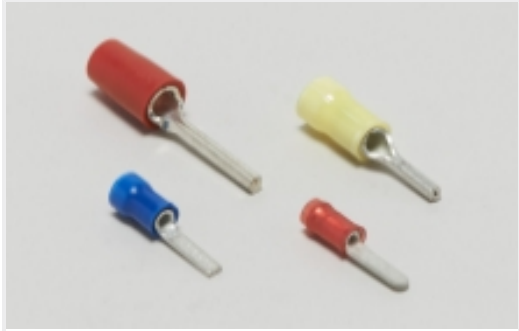


TE Part # 696050-1
PG 8 R 10


Also in the Series | PLASTI-GRIP



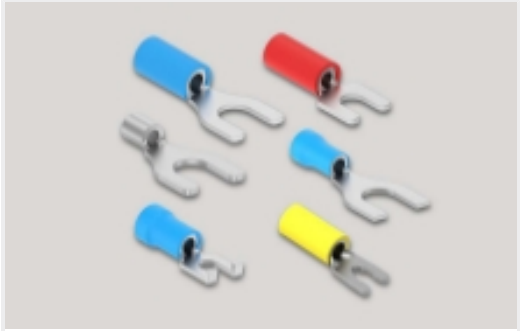
Compression Connectors(3)




Crimp Wire Pins, Tabs & Ferrules(20)



Ring Terminals(310)



Spade Terminals(158)



Splices(45)

Customers Also Bought



TE Part #2-32952-1
PG R 22-16 COMM 22-18 MIL 10



TE Part #2-34071-3
SPL,PG BUTT 16-14,FUNNEL ENTRY



TE Part #1-1969540-0
HOUSING, PLUG, 10P,DUAL ROW, EP2.5



TE Part #160780-4
110 FASTON,REC.,16-20 AWG,TPBR



TE Part #HD34-24-23PN-072
REC, 23P, AL, N, THD ADPT DRAIN, 16, P



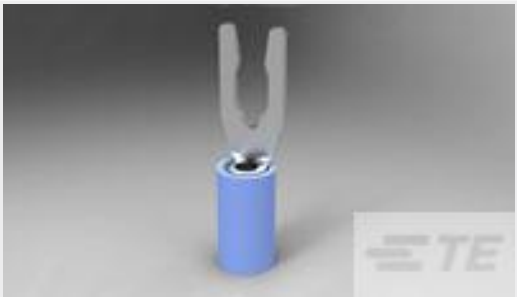
TE Part #696049-2
PG 8 R 8, TAPE



TE Part #1376397-1
5MM POWER KEY D/L PLATE GREEN



TE Part #42904-2
FF 250 REC TERMINAL 16-12 AWG TPBR



TE Part #52420-3
TERMINAL,PIDG SPR SPD 16-14 6



TE Part #5-1676914-8
YR1 0.1% 549R

Documents

Product Drawings

PG 8 R 10, TAPE

English

CAD Files

3D PDF

3D

Customer View Model

ENG_CVM_CVM_696050-2_B.2d_dxf.zip

English

Customer View Model

ENG_CVM_CVM_696050-2_B.3d_igs.zip

English

Customer View Model

ENG_CVM_CVM_696050-2_B.3d_stp.zip

English

By downloading the CAD file I accept and agree to the [Terms and Conditions](#) of use.

Product Specifications

696050-2

Closed Ring Tongue Terminal, 8 AWG, #10 Stud, 5 mm [.197 in] Stud Diameter,
Closed Barrel, Straight, Tin Plating, Partially Insulated, PLASTI-GRIP



Application Specification

English