



Terminals & Splices > Terminal Housings, Insulation Sleeves & Blocks > Crimp Terminal Housings



Terminal Type: **Receptacle**

Connector & Housing Type: **Receptacle**

Number of Positions: **1**

Terminal Orientation: **Straight**

UL Flammability Rating: **UL 94HB**

Features

Product Type Features

Sealable	No
Connector & Housing Type	Receptacle

Configuration Features

Number of Positions	1
---------------------	---

Body Features

Primary Product Color	Natural
-----------------------	---------

Contact Features

Terminal Type	Receptacle
Terminal Orientation	Straight
Contact Mating Retention	Without

Mechanical Attachment

Mating Alignment	With
Connector Mounting Type	Cable Mount (Free-Hanging)

Housing Features

--	--



Housing Material	Polypropylene
------------------	---------------

Industry Standards

UL Flammability Rating	UL 94HB
------------------------	---------

Packaging Features

Packaging Quantity	50
Packaging Method	Carton

Product Compliance

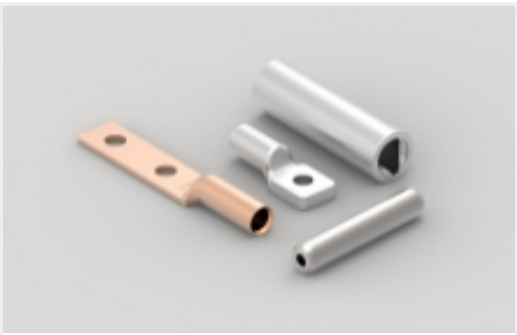
For compliance documentation, visit the product page on TE.com>

EU RoHS Directive 2011/65/EU	Compliant
EU ELV Directive 2000/53/EC	Compliant
China RoHS 2 Directive MIIT Order No 32, 2016	No Restricted Materials Above Threshold
EU REACH Regulation (EC) No. 1907/2006	Current ECHA Candidate List: JAN 2025 (247) Candidate List Declared Against: JAN 2024 (240) Does not contain REACH SVHC
Halogen Content	Low Halogen - Br, Cl, F, I < 900 ppm per homogenous material. Also BFR/CFR/PVC Free
Solder Process Capability	Not applicable for solder process capability

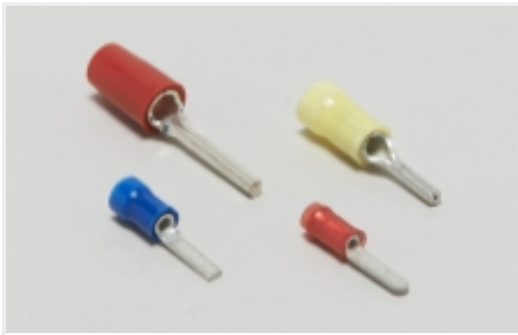
Product Compliance Disclaimer

This information is provided based on reasonable inquiry of our suppliers and represents our current actual knowledge based on the information they provided. This information is subject to change. The part numbers that TE has identified as EU RoHS compliant have a maximum concentration of 0.1% by weight in homogenous materials for lead, hexavalent chromium, mercury, PBB, PBDE, DBP, BBP, DEHP, DIBP, and 0.01% for cadmium, or qualify for an exemption to these limits as defined in the Annexes of Directive 2011/65/EU (RoHS2). Finished electrical and electronic equipment products will be CE marked as required by Directive 2011/65/EU. Components may not be CE marked. Additionally, the part numbers that TE has identified as EU ELV compliant have a maximum concentration of 0.1% by weight in homogenous materials for lead, hexavalent chromium, and mercury, and 0.01% for cadmium, or qualify for an exemption to these limits as defined in the Annexes of Directive 2000/53/EC (ELV). Regarding the REACH Regulation, the information TE provides on SVHC in articles for this part number is based on the latest European Chemicals Agency (ECHA) 'Guidance on requirements for substances in articles' posted at this URL: <https://echa.europa.eu/guidance-documents/guidance-on-reach>

Also in the Series | PIDG



Compression Connectors(17)



Crimp Wire Pins, Tabs & Ferrules(41)



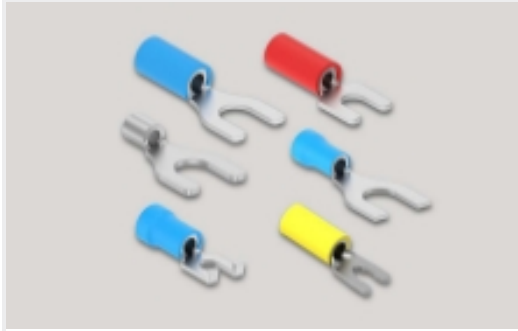
Hand Crimping Tools(2)



Knife Disconnects(11)



Ring Terminals(588)



Spade Terminals(228)

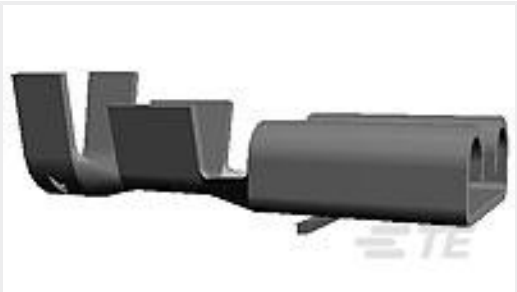


Special Purpose Terminals(1)

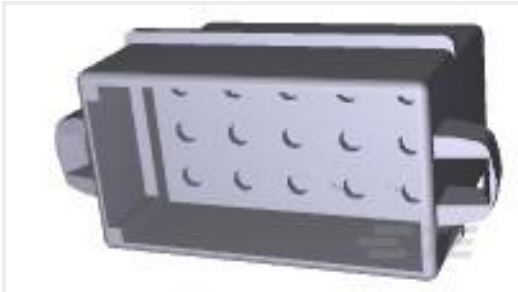


Splices(41)

Customers Also Bought



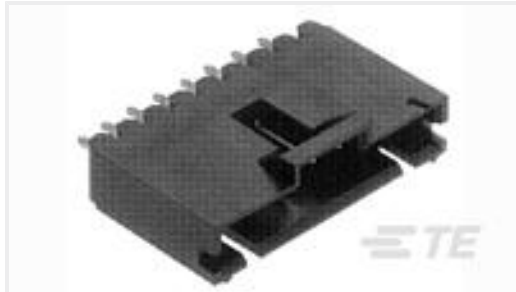
TE Part #42281-2
FF 250 REC 18-14AWG TPBR



TE Part #1-480324-0
15P CMNL CAP HSG P/M NATL



TE Part #1-1969540-6
HOUSING, PLUG, 16P,DUAL ROW, EP2.5



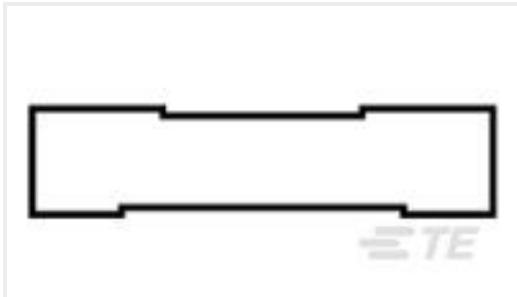
TE Part #1-103638-5
16 MTE HDR SRST LATCH .100CL



TE Part #8-34145-1
PG R 22-16 COMM 22-18 MIL 8



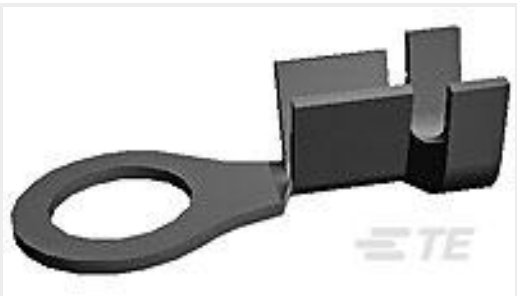
TE Part #640250-4
04P SL156 HSG W/LCK RAMP NATL



TE Part #55793-2
SPLICE,BUTT,P.G. 12-10



TE Part #8-34148-1
PG R 22-16 COMM 22-18 MIL 8



TE Part #640102-1
RING 18-14 AWG TPBR



TE Part #7-1377173-7
SMP 0-0035108-0

Documents



Product Drawings

SMP 0-0735075-0

English

CAD Files

3D PDF

3D

Customer View Model

ENG_CVM_CVM_7-1377174-6_C1.2d_dxf.zip

English

Customer View Model

ENG_CVM_CVM_7-1377174-6_C1.3d_igs.zip

English

Customer View Model

ENG_CVM_CVM_7-1377174-6_C1.3d_stp.zip

English

By downloading the CAD file I accept and agree to the [Terms and Conditions](#) of use.