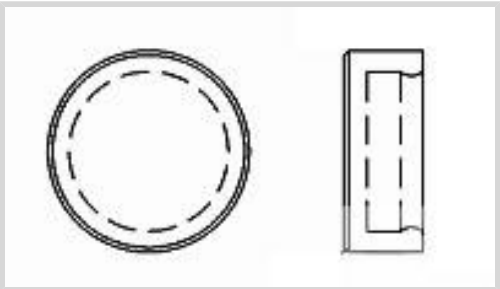




Switches > Switch Seals & Accessories



Switch Accessory Type: **Cap**

Product Shape: **Round**

Primary Product Color: **Red**

Features

Product Type Features

Switch Accessory Type	Cap
Product Shape	Round

Configuration Features

Switch Feedback Type	Non-Tactile
----------------------	-------------

Body Features

Primary Product Color	Red
-----------------------	-----

Mechanical Attachment

Attachment Method	Snap-Fit
-------------------	----------

Dimensions

Cap Diameter	8.99 mm[.354 in]
Cap Height	3.51 mm[.138 in]

Packaging Features

Packaging Method	Loose Piece
------------------	-------------

Product Compliance

[For compliance documentation, visit the product page on TE.com>](#)

EU RoHS Directive 2011/65/EU	Not Compliant
EU ELV Directive 2000/53/EC	Not Yet Reviewed
China RoHS 2 Directive MIIT Order No 32, 2016	No Restricted Materials Above Threshold
EU REACH Regulation (EC) No. 1907/2006	Current ECHA Candidate List: JAN 2025 (247)



Candidate List Declared Against: JUL 2017
(174)
SVHC > Threshold:
DEHP (27%)

Article Safe Usage Statements:
Do not eat, drink or smoke when using this product. Wash thoroughly after handling. Recycle if possible and dispose of the article by following all applicable governmental regulations relevant to your geographic location.


Halogen Content	Low Halogen - Br, Cl, F, I < 900 ppm per homogenous material. Also BFR/CFR/PVC Free
-----------------	---

Solder Process Capability	Wave solder capable to 265°C
---------------------------	------------------------------


Product Compliance Disclaimer

This information is provided based on reasonable inquiry of our suppliers and represents our current actual knowledge based on the information they provided. This information is subject to change. The part numbers that TE has identified as EU RoHS compliant have a maximum concentration of 0.1% by weight in homogenous materials for lead, hexavalent chromium, mercury, PBB, PBDE, DBP, BBP, DEHP, DIBP, and 0.01% for cadmium, or qualify for an exemption to these limits as defined in the Annexes of Directive 2011/65/EU (RoHS2). Finished electrical and electronic equipment products will be CE marked as required by Directive 2011/65/EU. Components may not be CE marked. Additionally, the part numbers that TE has identified as EU ELV compliant have a maximum concentration of 0.1% by weight in homogenous materials for lead, hexavalent chromium, and mercury, and 0.01% for cadmium, or qualify for an exemption to these limits as defined in the Annexes of Directive 2000/53/EC (ELV). Regarding the REACH Regulation, the information TE provides on SVHC in articles for this part number is based on the latest European Chemicals Agency (ECHA) 'Guidance on requirements for substances in articles' posted at this URL: <https://echa.europa.eu/guidance-documents/guidance-on-reach>


Customers Also Bought




TE Part #K1143046
Relay 31-313-12-S




TE Part #K1003000
Switch guard 08-0-0-02




TE Part #EM63602001
BATTU-25.4/12.7-A1-3-STK




TE Part #K1127139
Switch guard 07-0-0-30



TE Part #CAT-M1-ST814
M12 Straight Crimped Strain Relief



TE Part #CAT-AL8-KSEESS
Emergency Stop Switch, 1 Actuator, Flush, Threaded Bushing



TE Part #YHVP1100-1P-90-B-0
HVP1100-1phi XE,90,Key B

Documents

- CAD Files
- 3D PDF
- 3D



Customer View Model

[ENG_CVM_CVM_7-1437627-2_A_c-7-1437627-2-a.2d_dxf.zip](#)

English

Customer View Model

[ENG_CVM_CVM_7-1437627-2_A_c-7-1437627-2-a.3d_igs.zip](#)

English

Customer View Model

[ENG_CVM_CVM_7-1437627-2_A_c-7-1437627-2-a.3d_stp.zip](#)

English

By downloading the CAD file I accept and agree to the [Terms and Conditions](#) of use.