



Relays & Contactors > Electromechanical Relays



Relay & Contactor Type: **High Voltage Contactor**

Current Type: **DC**

Contact Arrangement: **1 Form A SPST-NO**

Contact Current Rating: **500 A**

Coil Voltage Rating: **12 VDC**

Features

Product Type Features

Relay & Contactor Type	High Voltage Contactor
------------------------	------------------------

Configuration Features

Auxiliary Switch Contact Arrangement	None
Contact Number of Poles	1
Contact Arrangement	1 Form A SPST-NO

Electrical Characteristics

Coil Resistance	11 Ω
Contact Switching Voltage (Max)	900 VDC
Contact Current Rating	500 A
Coil Voltage Rating	12 VDC

Body Features

Enclosure Type	Hermetically Sealed
----------------	---------------------

Contact Features

Contact Material	Copper
------------------	--------

Termination Features

Main Termination & Connection Type	M8 x 1.25
Coil Termination & Connection Type	10-32 Stud



Mechanical Attachment

Torque (Main)	75 in-lbs
Product Mounting Feature Type	Mounting Hole
Torque (Coil)	24 in-lbs

Operation/Application

Current Type	DC
--------------	----

Packaging Features

Packaging Method	Box & Carton
------------------	--------------

Product Compliance

For compliance documentation, visit the product page on TE.com>

EU RoHS Directive 2011/65/EU	Compliant with Exemptions
EU ELV Directive 2000/53/EC	Compliant
China RoHS 2 Directive MIIT Order No 32, 2016	Restricted Materials Above Threshold
EU REACH Regulation (EC) No. 1907/2006	Current ECHA Candidate List: JAN 2025 (247) Candidate List Declared Against: JUNE 2024 (241) SVHC > Threshold: Pb (90% in Component Part A) Article Safe Usage Statements: Do not eat, drink or smoke when using this product. Wash thoroughly after handling. Recycle if possible and dispose of the article by following all applicable governmental regulations relevant to your geographic location.
Halogen Content	Low Halogen - Br, Cl, F, I < 900 ppm per homogenous material. Also BFR/CFR/PVC Free
Solder Process Capability	Hand solderable with lead free solder

Product Compliance Disclaimer

This information is provided based on reasonable inquiry of our suppliers and represents our current actual knowledge based on the information they provided. This information is subject to change. The part numbers that TE has identified as EU RoHS compliant have a maximum concentration of 0.1% by weight in homogenous materials for lead, hexavalent chromium, mercury, PBB, PBDE, DBP, BBP, DEHP, DIBP, and 0.01% for cadmium, or qualify for an exemption to these limits as defined in the Annexes of Directive 2011/65/EU (RoHS2). Finished electrical and electronic equipment products will be CE marked as required by Directive 2011/65/EU. Components may not be CE marked. Additionally, the part numbers that TE has identified as EU ELV compliant have a maximum concentration of 0.1% by weight in homogenous materials for lead, hexavalent chromium, and mercury, and 0.01% for cadmium, or qualify for an exemption to these limits as defined in the Annexes of Directive 2000/53/EC (ELV). Regarding the REACH Regulation, the information TE provides on SVHC in articles for this part number is based on the latest European Chemicals Agency (ECHA) 'Guidance on requirements for substances in articles' posted at this URL: <https://echa.europa.eu/guidance-documents/guidance-on-reach>

Compatible Parts

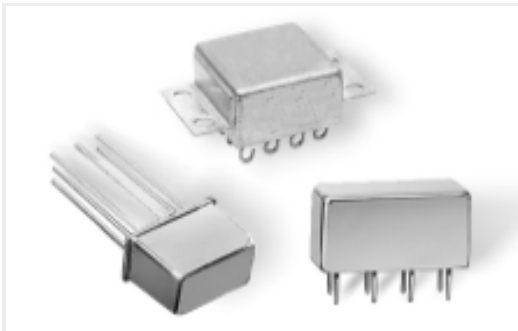


TE Part # 4-1618391-0
LEV100A4ANH=RELAY,SPST-NO,
12VDC

Also in the Series | Kilovac LEV200



DC Contactors(33)



DC Relays(33)



Electromechanical Relays(33)

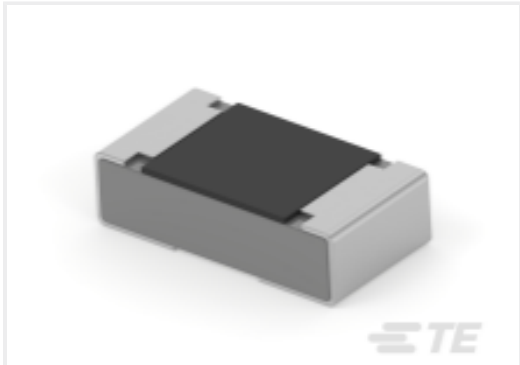
Customers Also Bought



TE Part #2071429-1
IHV350AANFA



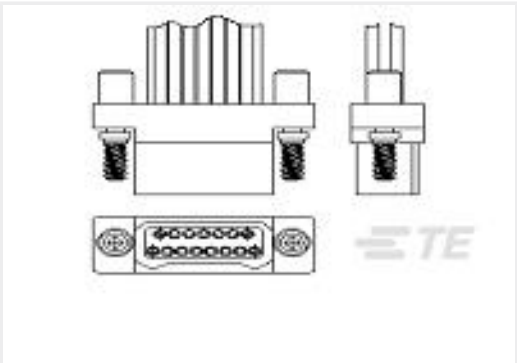
TE Part #2176429-5
MPT100 R47 5%



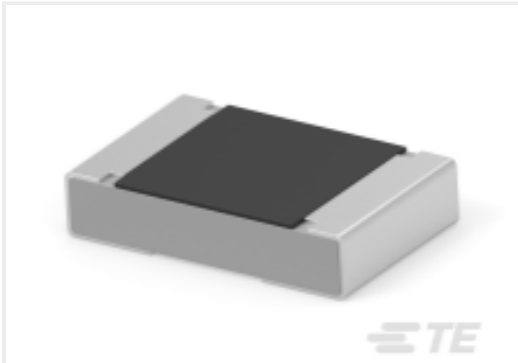
TE Part #8-2176479-8
RA73F 1J 412R 0.1% 5K RL



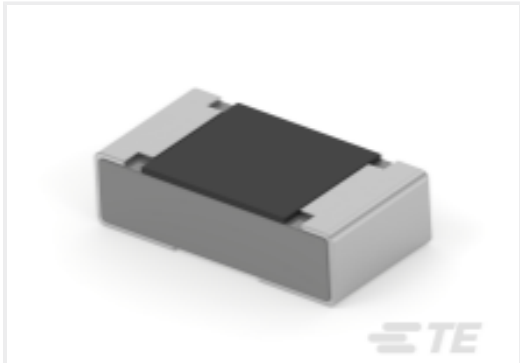
TE Part #34964
BUDGET, RING TONGUE, 12-10 10



TE Part #5-1589475-4
STM009PC2DC060N = WDUALOBE



TE Part #6-2176529-5
3504G 3A 237R 1% 1K RL



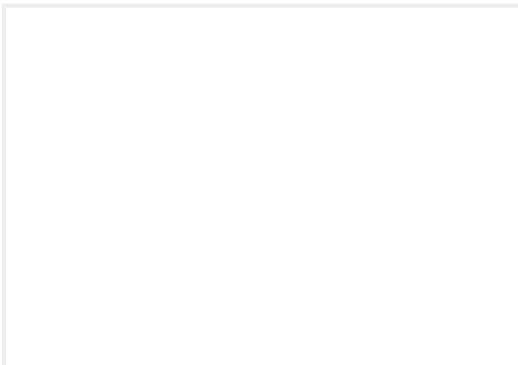
TE Part #9-2176479-7
RA73F 1J 511R 0.1% 5K RL



TE Part #1-1618240-4
K43B732=RELAY, VACUUM, SPST-NC



TE Part #2176429-6
MPT100 R68 5%



TE Part #TRAB7603
OMNI,SB,PH,760-870MHz



Documents

Product Drawings

LEV200A4NAF01=Contactor, w/Coil Sup

English

CAD Files

3D PDF

3D

Customer View Model

ENG_CVM_CVM_7-1618401-3_C.2d_dxf.zip

English

Customer View Model

ENG_CVM_CVM_7-1618401-3_C.3d_igs.zip

English

Customer View Model

ENG_CVM_CVM_7-1618401-3_C.3d_stp.zip

English

By downloading the CAD file I accept and agree to the [Terms and Conditions](#) of use.

Datasheets & Catalog Pages

5-1773450-5_sec7_LEV200

English

Agency Approvals

CE Declaration of Conformity

English