



Relays & Contactors > Electromechanical Relays



Relay & Contactor Type: **High Voltage Contactor**

Current Type: **DC**

Contact Arrangement: **DPST-NO**

Contact Current Rating: **350 A**

Coil Voltage Rating: **28 VDC**

Features

Product Type Features

Relay & Contactor Type	High Voltage Contactor
------------------------	------------------------

Configuration Features

Contact Number of Poles	2
Contact Arrangement	DPST-NO

Electrical Characteristics

Coil Resistance	7.8 $\Omega$ , 90 $\Omega$
Contact Switching Voltage (Max)	600 VAC
Contact Current Rating	350 A
Coil Voltage Rating	28 VDC

Termination Features

Main Termination & Connection Type	M6 x 1 Female
Coil Termination & Connection Type	Flying Leads

Mechanical Attachment

Product Mount Type	Chassis Mount
--------------------	---------------

Operation/Application

Current Type	DC
--------------	----



Product Compliance

For compliance documentation, visit the product page on TE.com>

EU RoHS Directive 2011/65/EU	Compliant with Exemptions
EU ELV Directive 2000/53/EC	Compliant with Exemptions
China RoHS 2 Directive MIIT Order No 32, 2016	Restricted Materials Above Threshold
EU REACH Regulation (EC) No. 1907/2006	Current ECHA Candidate List: JAN 2025 (247) Candidate List Declared Against: JUNE 2024 (241) SVHC > Threshold: Pb (3.7% in Component Part) <b>Article Safe Usage Statements:</b> Do not eat, drink or smoke when using this product. Wash thoroughly after handling. Recycle if possible and dispose of the article by following all applicable governmental regulations relevant to your geographic location.
Halogen Content	Low Halogen - Br, Cl, F, I < 900 ppm per homogenous material. Also BFR/CFR/PVC Free
Solder Process Capability	Hand solderable with lead free solder

Product Compliance Disclaimer

This information is provided based on reasonable inquiry of our suppliers and represents our current actual knowledge based on the information they provided. This information is subject to change. The part numbers that TE has identified as EU RoHS compliant have a maximum concentration of 0.1% by weight in homogenous materials for lead, hexavalent chromium, mercury, PBB, PBDE, DBP, BBP, DEHP, DIBP, and 0.01% for cadmium, or qualify for an exemption to these limits as defined in the Annexes of Directive 2011/65/EU (RoHS2). Finished electrical and electronic equipment products will be CE marked as required by Directive 2011/65/EU. Components may not be CE marked. Additionally, the part numbers that TE has identified as EU ELV compliant have a maximum concentration of 0.1% by weight in homogenous materials for lead, hexavalent chromium, and mercury, and 0.01% for cadmium, or qualify for an exemption to these limits as defined in the Annexes of Directive 2000/53/EC (ELV). Regarding the REACH Regulation, the information TE provides on SVHC in articles for this part number is based on the latest European Chemicals Agency (ECHA) ‘Guidance on requirements for substances in articles’ posted at this URL: <https://echa.europa.eu/guidance-documents/guidance-on-reach>

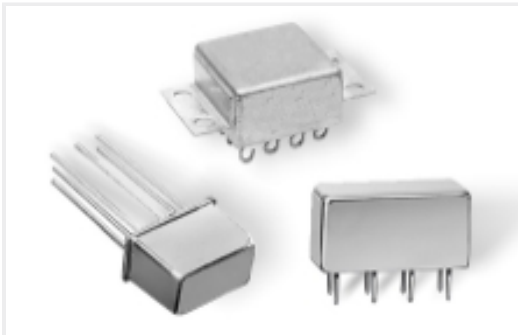
Compatible Parts



Also in the Series | Kilovac EV202



DC Contactors(5)



DC Relays(5)

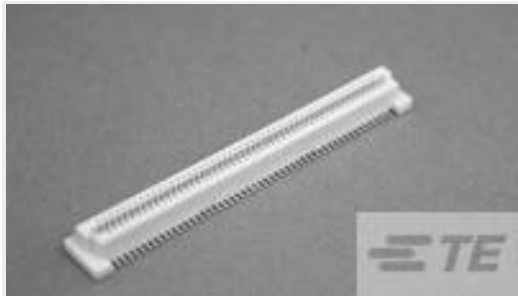


Electromechanical Relays(5)

Customers Also Bought



TE Part #EC0250-000  
05811937



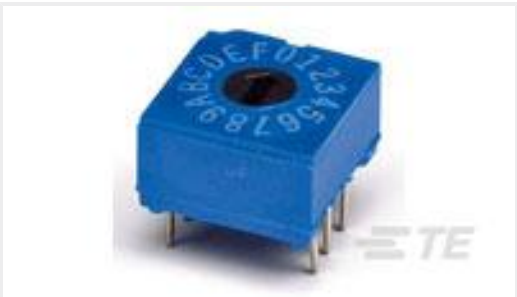
TE Part #5177983-8  
0.8FH,R05H.5,160,08/Sn,TU



TE Part #787082-7  
68 50SR R/A RCPT ASSY,REDESIGN



TE Part #K1143304  
Battery Disconnect 35-411-151-R



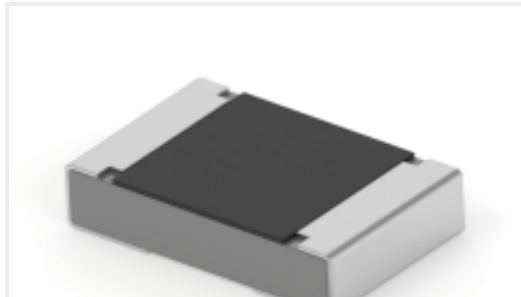
TE Part #1825008-3  
DRD16CRAE04=Rot Dip,R/A,w/comp



TE Part #1-1879456-6  
TE 2000W 18R 5% Bracket



TE Part #5-5223961-1  
TE UPM R/A Header 3P HC Power, LLL



TE Part #4-2176482-6  
RA73F 2A 150R 0.1% 5K RL



TE Part #5179029-8  
0.8FH,P06H.5,160,08/Sn,TU



TE Part #EC0225-000  
05811912

Documents

Product Drawings  
EV202ASAND=Relay, DPST-NO 28V  
English

Datasheets & Catalog Pages  
5-1773450-5\_sec7\_EV200A  
English  
KILOVAC EV200 Series Contactor  
English



---

[Agency Approvals](#)

[CE Declaration of Conformity](#)

English