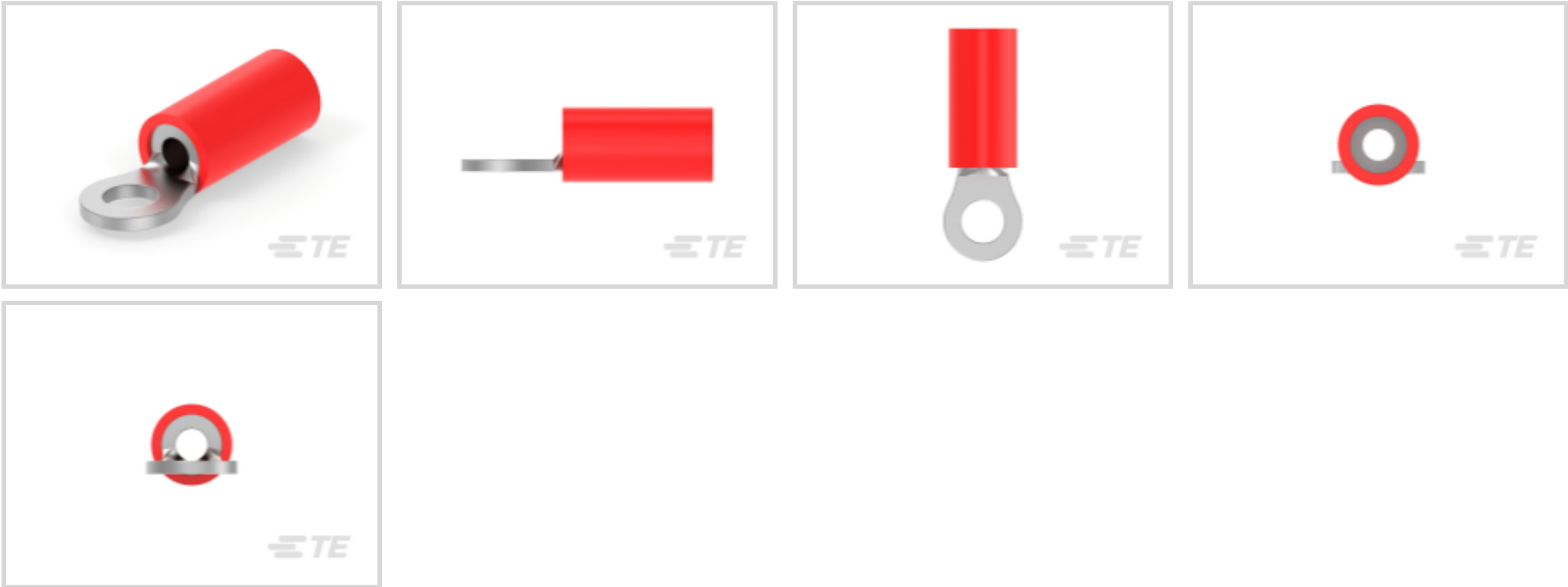




Terminals & Splices > Ring Terminals



Ring Terminal Product Type: Closed Ring Tongue Terminal

Wire Size: 509 – 3260 CMA

Stud Size: #4, M2.5

Features

Product Type Features

Ring Terminal Product Type	Closed Ring Tongue Terminal
Stud Size	#4, M2.5
Sealable	No

Wire Insulation Support Retention Type	Insulation Support
--	--------------------

Configuration Features

Number of Holes	1
-----------------	---

Electrical Characteristics

Voltage Rating	600 V
----------------	-------

Body Features

Product Weight	1.493 g
Insulation Sleeve Color	Red
Stripe Color	Red

Contact Features

Barrel Type	Closed
Terminal Orientation	Straight



Terminal Plating Material	Tin
---------------------------	-----

Mechanical Attachment

Wire Insulation Support	With
-------------------------	------

Dimensions

Wire Size	509 – 3260 CMA
Stud Diameter	3.02 mm[.119 in]
Tongue Thickness	.79 mm[.031 in]
Product Length	17.37 mm[.684 in]
Compatible Insulation Diameter (Max)	3.56 mm[.14 in]
Compatible Insulation Diameter Range	2.67 – 3.56 mm[.105 – .14 in]

Usage Conditions

Insulation Option	Partially Insulated
-------------------	---------------------

Operation/Application

Compatible With Wire Base Material	Copper
Compatible With Wire Plating Material	Tin

Industry Standards

Government Qualified Terminal	No
-------------------------------	----

Packaging Features

Packaging Quantity	100
Packaging Method	Loose Piece

Product Compliance

For compliance documentation, visit the product page on TE.com>

EU RoHS Directive 2011/65/EU	Compliant
EU ELV Directive 2000/53/EC	Compliant
China RoHS 2 Directive MIIT Order No 32, 2016	No Restricted Materials Above Threshold
EU REACH Regulation (EC) No. 1907/2006	Current ECHA Candidate List: JAN 2025 (247) Candidate List Declared Against: JAN 2025 (247) Does not contain REACH SVHC
Halogen Content	Not Low Halogen - contains Br or Cl > 900 ppm.
Solder Process Capability	Not applicable for solder process capability



Product Compliance Disclaimer

This information is provided based on reasonable inquiry of our suppliers and represents our current actual knowledge based on the information they provided. This information is subject to change. The part numbers that TE has identified as EU RoHS compliant have a maximum concentration of 0.1% by weight in homogenous materials for lead, hexavalent chromium, mercury, PBB, PBDE, DBP, BBP, DEHP, DIBP, and 0.01% for cadmium, or qualify for an exemption to these limits as defined in the Annexes of Directive 2011/65/EU (RoHS2). Finished electrical and electronic equipment products will be CE marked as required by Directive 2011/65/EU. Components may not be CE marked. Additionally, the part numbers that TE has identified as EU ELV compliant have a maximum concentration of 0.1% by weight in homogenous materials for lead, hexavalent chromium, and mercury, and 0.01% for cadmium, or qualify for an exemption to these limits as defined in the Annexes of Directive 2000/53/EC (ELV). Regarding the REACH Regulation, the information TE provides on SVHC in articles for this part number is based on the latest European Chemicals Agency (ECHA) ‘Guidance on requirements for substances in articles’ posted at this URL: <https://echa.europa.eu/guidance-documents/guidance-on-reach>

Compatible Parts



TE Part # 169404  
CERTI-LOK DIE



TE Part # 58423-1  
DIE, RBY IS9252




TE Part # 47386  
DAHT PG PIDG 26-16 ASSY



TE Part # 58433-3  
PRO CR ASSY, RBY IS9252


Also in the Series | PLASTI-GRIP



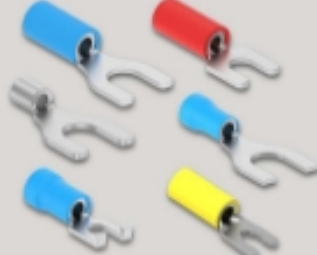
Compression Connectors(3)



Crimp Wire Pins, Tabs & Ferrules(20)



Ring Terminals(310)

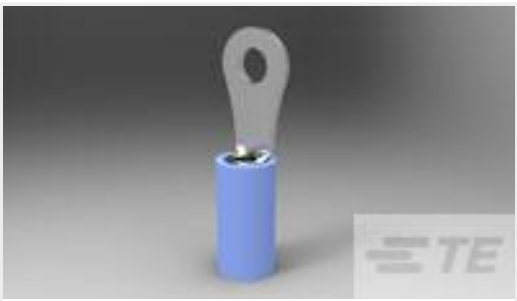


Spade Terminals(158)



Splices(45)

Customers Also Bought



TE Part #323676  
TERMINAL,PIDG R 16-14 4



TE Part #2337235-1  
TACT MICRO JB 4.6X4.4X1.05 P3.5 PH 100GF



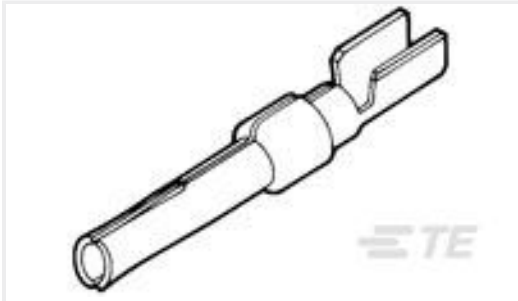
TE Part #5-1437514-9  
8134-HC-12P2=HOLTITE CONTACT 3



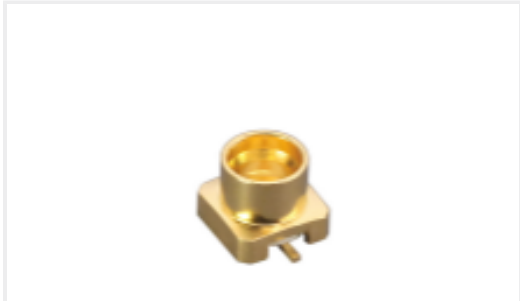
TE Part #1-1623720-3  
CCR2 33R 10%



TE Part #4-641215-5  
15P MTA100 HDR ASSY FL/ST 30AU



TE Part #205201-3  
20DF SOCKET CONTACT,PLATED



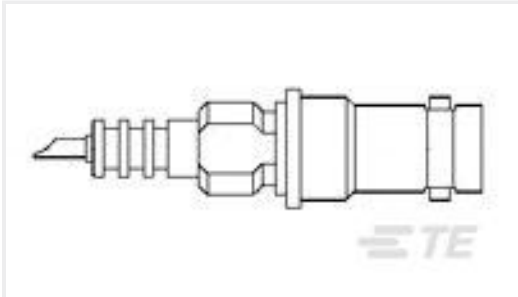
TE Part #CONSMP001-SMD-G-T  
SMP Plug 50 Ohm PCB Surface Mount



TE Part #2-1623720-5  
CCR2 18R 10%



TE Part #33476  
PIDG RECT 22-16COMM 22-18MIL 6



TE Part #51494-1  
SAFE HIGH VOLTAGE BLKHD RECEPT

Documents

Product Drawings

PG R 22-16 COMM 22-18 MIL 4

English

CAD Files

Customer View Model

ENG\_CVM\_CVM\_8-34141-1\_N.2d\_dxf.zip

English

3D PDF

3D

Customer View Model

ENG\_CVM\_CVM\_8-34141-1\_N.3d\_igs.zip

English

Customer View Model

ENG\_CVM\_CVM\_8-34141-1\_N.3d\_stp.zip

English

By downloading the CAD file I accept and agree to the [Terms and Conditions](#) of use.

Product Specifications

8-34141-1

Closed Ring Tongue Terminal, 22 AWG, #4 / M2.5 Stud, 3.02 mm [.119 in] Stud Diameter, Closed Barrel, Straight, Tin Plating, PLASTI-GRIP



Application Specification

English