



Sensors > Pressure Sensors > Media Isolated Pressure Sensors > Pressure Sensor, MV Output, 13 mm



Pressure Sensor Type: **mV Output Pressure Sensors**

Pressure Type: **Gauge**

Output Signal Type: **100mV**

Operating Temperature Range: **-40 – 125 °C [-40 – 257 °F]**

Port Fitting: **Weldable (5/16-32 UNEF-3A Thread)**

[All Pressure Sensor, MV Output, 13 mm \(4\)](#)

Features

Product Type Features

Pressure Sensor Type	mV Output Pressure Sensors
Pressure Type	Gauge
Sensor Package	Threaded Process Fittings, Weldable

Configuration Features

Electrical Connection	Wire Leads
-----------------------	------------

Electrical Characteristics

Supply Current	1.5 mA
----------------	--------

Dimensions

Product Diameter	15.85 mm[.624 in]
Product Height	9.3 mm[.366 in]

Usage Conditions

Operating Temperature Range	-40 – 125 °C[-40 – 257 °F]
-----------------------------	----------------------------

Operation/Application

Proof Pressure Range	3X
Output Signal Type	100mV

Other



Non-Linearity ±	.1 %
Port Fitting	Weldable (5/16-32 UNEF-3A Thread)

Product Compliance

For compliance documentation, visit the product page on TE.com>

EU RoHS Directive 2011/65/EU	Compliant
EU ELV Directive 2000/53/EC	Compliant with Exemptions
China RoHS 2 Directive MIIT Order No 32, 2016	No Restricted Materials Above Threshold
EU REACH Regulation (EC) No. 1907/2006	Current ECHA Candidate List: JAN 2025 (247) Candidate List Declared Against: JUNE 2024 (241) Does not contain REACH SVHC
Halogen Content	Not Yet Reviewed for halogen content
Solder Process Capability	Not reviewed for solder process capability

Product Compliance Disclaimer

This information is provided based on reasonable inquiry of our suppliers and represents our current actual knowledge based on the information they provided. This information is subject to change. The part numbers that TE has identified as EU RoHS compliant have a maximum concentration of 0.1% by weight in homogenous materials for lead, hexavalent chromium, mercury, PBB, PBDE, DBP, BBP, DEHP, DIBP, and 0.01% for cadmium, or qualify for an exemption to these limits as defined in the Annexes of Directive 2011/65/EU (RoHS2). Finished electrical and electronic equipment products will be CE marked as required by Directive 2011/65/EU. Components may not be CE marked. Additionally, the part numbers that TE has identified as EU ELV compliant have a maximum concentration of 0.1% by weight in homogenous materials for lead, hexavalent chromium, and mercury, and 0.01% for cadmium, or qualify for an exemption to these limits as defined in the Annexes of Directive 2000/53/EC (ELV). Regarding the REACH Regulation, the information TE provides on SVHC in articles for this part number is based on the latest European Chemicals Agency (ECHA) ‘Guidance on requirements for substances in articles’ posted at this URL: <https://echa.europa.eu/guidance-documents/guidance-on-reach>

Compatible Parts

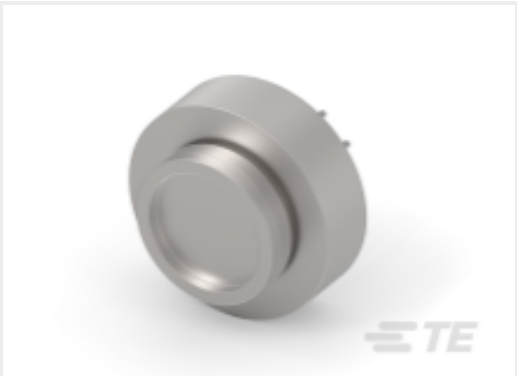


Also in the Series | MEAS 85



Media Isolated Pressure Sensors(42)

Customers Also Bought



TE Part #CAT-MIPS0044
MV Pressure Sensor, Uncalibrated, 87NU



TE Part #154N-500A-R
500 PSIA RIBBON CABLE MV PRESSURE SENSOR



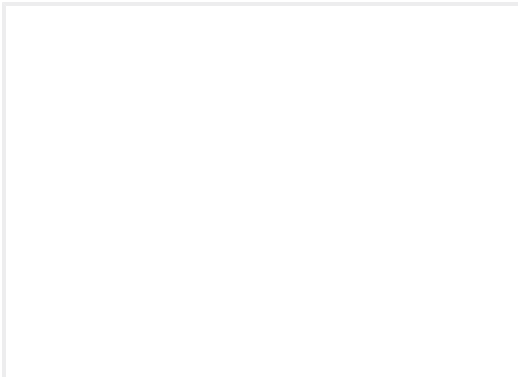
TE Part #20004546-00
4610-010-060-D



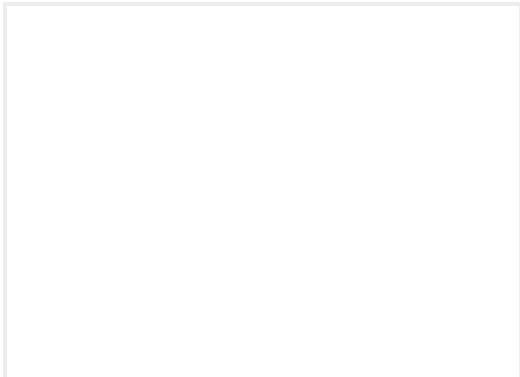
TE Part #6-6437158-0
FSN-21.5A



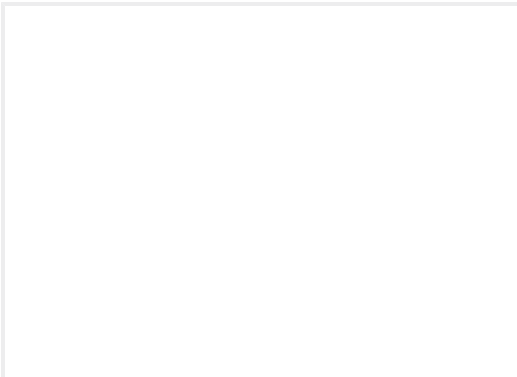
TE Part #85-030G-0U
30 PSIG WELDABLE PRESSURE SENSOR



TE Part #85-050G-0U
NISO,NO FIT,UNCOMP



TE Part #85-015A-0U
NISO,NO FIT,UNCOMP



TE Part #85-100G-0U
NISO,NO FIT,UNCOMP

Documents

CAD Files

3D PDF

3D

Customer View Model

ENG_CVM_CVM_85-300G-0U_D.2d_dxf.zip

English

Customer View Model

ENG_CVM_CVM_85-300G-0U_D.3d_igs.zip

English

Customer View Model

ENG_CVM_CVM_85-300G-0U_D.3d_stp.zip

English

By downloading the CAD file I accept and agree to the [Terms and Conditions](#) of use.

Datasheets & Catalog Pages

85U

English

85-300G-0U

300 PSIG WELDABLE PRESSURE SENSOR

