

LEV100A5ANG

✓ ACTIVE

Kilovac | Kilovac LEV100

TE Internal #: 9-1618389-8

High Voltage Contactor, DC, 1 Form X SPST-NO-DM, 100 A  
Contact Rating, 24 VDC Coil Voltage, Chassis Mount,  
Environmentally Sealed, Kilovac LEV100

[View on TE.com >](#)



Relays & Contactors > Electromechanical Relays



Relay & Contactor Type: **High Voltage Contactor**

Current Type: **DC**

Contact Arrangement: **1 Form X SPST-NO-DM**

Contact Current Rating: **100 A**

Coil Voltage Rating: **24 VDC**

Features

Product Type Features

Relay & Contactor Type	High Voltage Contactor
------------------------	------------------------

Configuration Features

Auxiliary Switch Contact Arrangement	None
Contact Number of Poles	1
Contact Arrangement	1 Form X SPST-NO-DM

Electrical Characteristics

Coil Resistance	96 Ω
Contact Switching Voltage (Max)	900 VDC
Contact Current Rating	100 A
Coil Voltage Rating	24 VDC

Body Features

Enclosure Type	Environmentally Sealed
----------------	------------------------

Termination Features

Main Termination & Connection Type	M5 Female
Coil Termination & Connection Type	Connector

Mechanical Attachment

Torque (Main)	30 – 40 in-lbs
Product Mount Type	Chassis Mount



Dimensions

Coil Wire Length	381 mm[15 in]
Wire Size	22 AWG

Operation/Application

Current Type	DC
--------------	----

Packaging Features

Packaging Method	Individual
------------------	------------

Product Compliance

For compliance documentation, visit the product page on TE.com>

EU RoHS Directive 2011/65/EU	Compliant
EU ELV Directive 2000/53/EC	Compliant
China RoHS 2 Directive MIIT Order No 32, 2016	No Restricted Materials Above Threshold
EU REACH Regulation (EC) No. 1907/2006	Current ECHA Candidate List: JAN 2025 (247) Candidate List Declared Against: JAN 2025 (247) SVHC > Threshold: Pb (.35% in 74025572) <b>Article Safe Usage Statements:</b> Do not eat, drink or smoke when using this product. Wash thoroughly after handling. Recycle if possible and dispose of the article by following all applicable governmental regulations relevant to your geographic location.
Halogen Content	Low Halogen - Br, Cl, F, I < 900 ppm per homogenous material. Also BFR/CFR/PVC Free
Solder Process Capability	Not applicable for solder process capability

Product Compliance Disclaimer

This information is provided based on reasonable inquiry of our suppliers and represents our current actual knowledge based on the information they provided. This information is subject to change. The part numbers that TE has identified as EU RoHS compliant have a maximum concentration of 0.1% by weight in homogenous materials for lead, hexavalent chromium, mercury, PBB, PBDE, DBP, BBP, DEHP, DIBP, and 0.01% for cadmium, or qualify for an exemption to these limits as defined in the Annexes of Directive 2011/65/EU (RoHS2). Finished electrical and electronic equipment products will be CE marked as required by Directive 2011/65/EU. Components may not be CE marked. Additionally, the part numbers that TE has identified as EU ELV compliant have a maximum concentration of 0.1% by weight in homogenous materials for lead, hexavalent chromium, and mercury, and 0.01% for cadmium, or qualify for an exemption to these limits as defined in the Annexes of Directive 2000/53/EC (ELV). Regarding the REACH Regulation, the information TE provides on SVHC in articles for this part number is based on the latest European Chemicals Agency (ECHA) ‘Guidance on requirements for substances in articles’ posted at this URL: <https://echa.europa.eu/guidance-documents/guidance-on-reach>

Compatible Parts

LEV100A5ANG

High Voltage Contactor, DC, 1 Form X SPST-NO-DM, 100 A Contact Rating, 24 VDC  
Coil Voltage, Chassis Mount, Environmentally Sealed, Kilovac LEV100



TE Part # 6-1618400-4  
LEV100A7ANG=RELAY, 28Vdc SPST-NO



TE Part # 4-1618413-9  
EV600HSANM = CONTACTOR, SPST-NO 24V COIL



TE Part # 6-1618388-7  
LEV200H5ANF=RELAY, SPST-NO



TE Part # 7-1618387-1  
LEV200A5ANA=RELAY, SPST-NO



TE Part # 1618412-8  
LEV100H5ANG=CONTACTOR WITH AUX SPST,15"



TE Part # CAT-DC-K1K-CONT  
SPST: Kilovac K1K DC Contactors; Bi-directional Switching



TE Part # 5-1618388-5  
LEV200H5ANA=RELAY, SPST-NO



TE Part # 4-1618391-1  
LEV100A5ANH=RELAY,SPST-NO 24VDC VMT 15



TE Part # 8-1618406-3  
EV202ASAND=Relay, DPST-NO 28V



TE Part # 9-1618407-9  
LEV100H5CNH=CONTACTOR WITH AUX, SPST



TE Part # 1618408-2  
LEV100H5CNG = CONTACTOR WITH AUX SPST



TE Part # 4-1618388-6  
LEV200A5NAA=RELAY, SPST-NO



TE Part # 4-1618387-1  
EV200HRANA=RELAY, SPST-NO



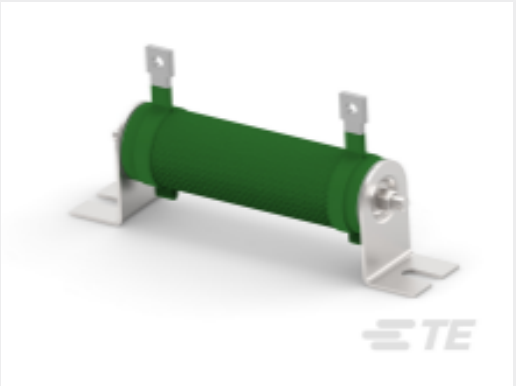
TE Part # 5-1618387-7  
LEV200A5NAF=RELAY, 24Vdc SPST NO

Also in the Series |

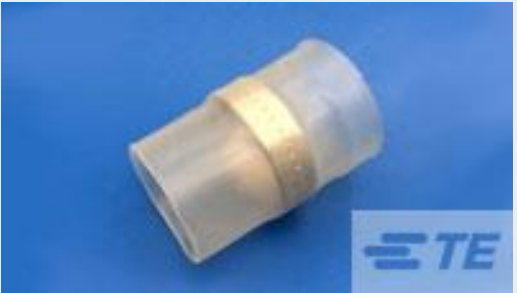
Customers Also Bought



TE Part #282217-000  
81044/12-20-6



TE Part #CAT-C339-T2201  
Wirewound Resistor: Mineral, 2.5 Kw



TE Part #000989-000  
D-106-6021



TE Part #170032-6  
250 FASTON,REC.,20-14 AWG,TPBR



Documents

CAD Files

3D PDF

3D

Customer View Model

ENG\_CVM\_CVM\_9-1618389-8\_E.2d\_dxf.zip

English

Customer View Model

ENG\_CVM\_CVM\_9-1618389-8\_E.3d\_igs.zip

English

Customer View Model

ENG\_CVM\_CVM\_9-1618389-8\_E.3d\_stp.zip

English

By downloading the CAD file I accept and agree to the [Terms and Conditions](#) of use.

Datasheets & Catalog Pages

Kilovac LEV100 Series 900 Vdc Contactor

English