



Terminals & Splices > Terminal Housings, Insulation Sleeves & Blocks > Crimp Terminal Housings



Terminal Type: **Receptacle**
Connector & Housing Type: **Receptacle**
Number of Positions: **3**
Terminal Orientation: **Straight**
UL Flammability Rating: **UL 94V-0**

Features

Product Type Features

Connector & Contact Terminates To	Wire & Cable
Sealable	No
Connector System	Wire-to-Board, Wire-to-Wire
Connector & Housing Type	Receptacle

Configuration Features

Number of Positions	3
---------------------	---

Body Features

Primary Product Color	White
-----------------------	-------

Contact Features

Terminal Type	Receptacle
Terminal Orientation	Straight
Contact Mating Retention	Without

Mechanical Attachment

--



Mating Alignment Type	Polarization
Mating Alignment	With
Connector Mounting Type	Cable Mount (Free-Hanging)

Housing Features

Housing Material	Polyamide 6.6
Centerline (Pitch)	6.4 mm[.25 in]

Usage Conditions

Operating Temperature Range	-40 – 105 °C[-40 – 221 °F]
-----------------------------	----------------------------

Industry Standards

UL Flammability Rating	UL 94V-0
------------------------	----------

Packaging Features

Packaging Quantity	2000
Packaging Method	Carton

Product Compliance

For compliance documentation, visit the product page on TE.com>

EU RoHS Directive 2011/65/EU	Compliant
EU ELV Directive 2000/53/EC	Compliant
China RoHS 2 Directive MIIT Order No 32, 2016	No Restricted Materials Above Threshold
EU REACH Regulation (EC) No. 1907/2006	Current ECHA Candidate List: JAN 2025 (247) Candidate List Declared Against: JAN 2025 (247) Does not contain REACH SVHC
Halogen Content	Low Halogen - Br, Cl, F, I < 900 ppm per homogenous material. Also BFR/CFR/PVC Free
Solder Process Capability	Not applicable for solder process capability

Product Compliance Disclaimer

This information is provided based on reasonable inquiry of our suppliers and represents our current actual knowledge based on the information they provided. This information is subject to change. The part numbers that TE has identified as EU RoHS compliant have a maximum concentration of 0.1% by weight in homogenous materials for lead, hexavalent chromium, mercury, PBB, PBDE, DBP, BBP, DEHP, DIBP, and 0.01% for cadmium, or qualify for an exemption to these limits as defined in the Annexes of Directive 2011/65/EU (RoHS2). Finished electrical and electronic equipment products will be CE marked as required by Directive 2011/65/EU. Components may not be CE marked. Additionally, the part numbers that TE has identified as EU ELV compliant have a maximum concentration of 0.1% by weight in homogenous materials for lead, hexavalent chromium, and mercury, and 0.01% for cadmium, or qualify for an exemption to these limits as defined in the Annexes of Directive 2000/53/EC (ELV). Regarding the REACH Regulation, the information TE provides on SVHC in articles for this part number is based on the latest European Chemicals Agency (ECHA) 'Guidance on

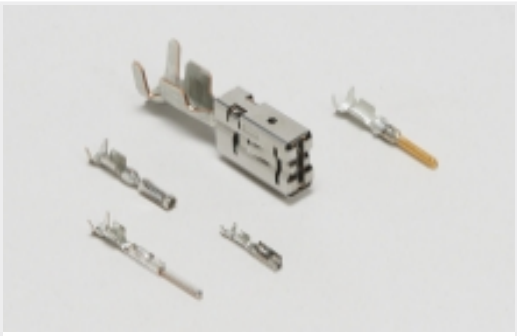
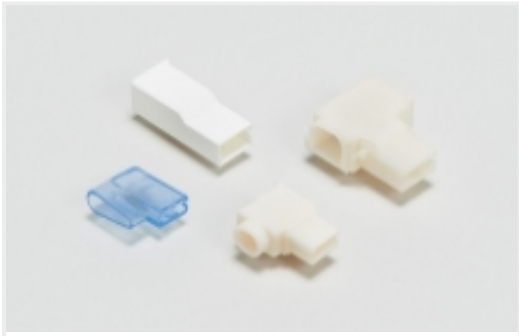




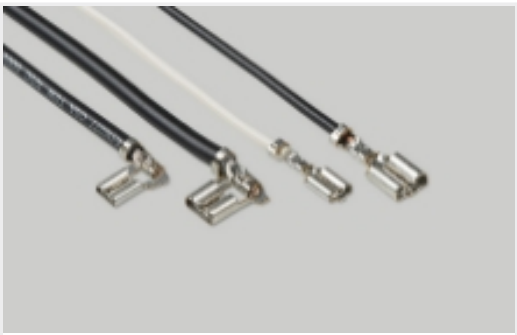
requirements for substances in articles’ posted at this URL: <https://echa.europa.eu/guidance-documents/guidance-on-reach>

Compatible Parts

 <p>TE Part # 927422-1 POSITIVE LOCK 3P HOUSING PA6.6 BLACK</p>	 <p>TE Part # 1-154719-1 PL 250 REC HSG 1P NYLON NAT</p>	 <p>TE Part # 926319-1 PL 250 REC HSG 2P NYLON BLACK</p>	 <p>TE Part # 1-154719-0 PL 250 REC HSG 1P NYLON NAT</p>
 <p>TE Part # 926646-8 PL 250 8P HOUSING PA6.6 ZYTEL 101 WHITE</p>	 <p>TE Part # 1-174587-1 PL MK2 2P 187 HOUSING RECEPTACLE NAT</p>	 <p>TE Part # 927389-1 PL 3P HOUSING PA66 BLACK</p>	 <p>TE Part # 100100-1 2 POS POSITIVE LOCK (PL) HOUSING</p>
 <p>TE Part # 927076-1 PL HOUSING 0.6 PA 6.6 + PE-GF13 BLACK</p>	 <p>TE Part # 926526-1 PL MK1 250 REC HSG 5P NYLON BLACK</p>		

Also in the Series | Positive Lock 250

 <p>Automotive Terminals(1)</p>	 <p>Crimp Terminal Housings(177)</p>	 <p>Insertion & Extraction Tools(3)</p>	 <p>Insulation Boots & Sleeves(5)</p>
--	--	--	--



[Quick Disconnects\(173\)](#)

Customers Also Bought



TE Part #8-1564284-6
[96POS,MCON-1.2 CB,REC HSG,ASSY](#)



TE Part #1-1718492-2
[1.5MM TAB HSG 36 POS ASSY](#)



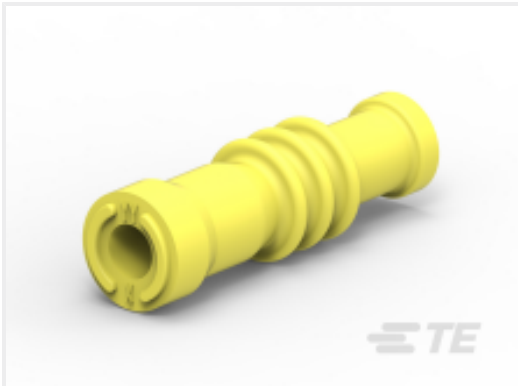
TE Part #2360002-1
[REC CONN CVR ASSY,96POS,AMP MCP 2.8](#)



TE Part #3-967402-1
[2.5MM PIN HOUSING, 2-4POS.,ASS](#)



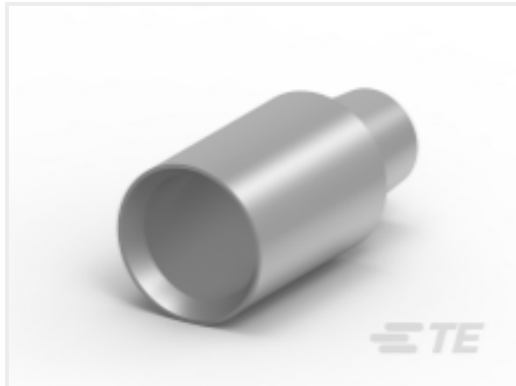
TE Part #1743283-1
[MQS 8P PLUG DBL HSG](#)



TE Part #2297819-1
[SINGLE WIRE SEAL,HPF 1.2,RUBBER](#)



TE Part #953122-4
[40W MQS COVER ASSY \(15d\)](#)



TE Part #HC5738
[95MM2 POSBAT LEAD 1/4" UNC THREAD](#)



TE Part #1544966-1
[8MM NG1+ TERMINAL](#)



TE Part #2-1564526-1
[18POS,TAB 1.6X0.6,TAB HSG,ASSY](#)

Documents

Product Drawings

[POSITIVE LOCK 3P HOUSING PA 6.6 WHITE](#)

English

CAD Files

[3D PDF](#)

3D

Customer View Model

[ENG_CVM_CVM_927389-2_A.2d_dxf.zip](#)



English

Customer View Model

[ENG_CVM_CVM_927389-2_A.3d_igs.zip](#)

English

Customer View Model

[ENG_CVM_CVM_927389-2_A.3d_stp.zip](#)

English

By downloading the CAD file I accept and agree to the [Terms and Conditions](#) of use.