



Sensors > Pressure Sensors > Media Isolated Pressure Sensors > Differential MV Output Pressure Sensor



Pressure Sensor Type: **mV Output Pressure Sensors**

Pressure Type: **Differential**

Supply Voltage Range: **5 V**

Operating Temperature Range: **-40 – 125 °C [ -40 – 257 °F ]**

Port Fitting: **O- Ring Mount**

[All Differential MV Output Pressure Sensor \(8\)](#)

Features

Product Type Features

Pressure Sensor Type	mV Output Pressure Sensors
Pressure Type	Differential
Sensor Package	O-Ring Mount

Electrical Characteristics

Supply Current	1.5 mA
Supply Voltage Range	5 V

Dimensions

Product Diameter	15.82 mm[.622 in]
Product Height	17.52 mm[.69 in]

Usage Conditions

Operating Temperature Range	-40 – 125 °C[-40 – 257 °F]
-----------------------------	----------------------------

Operation/Application

Proof Pressure Range	3X
----------------------	----

Other

Non-Linearity ±	.1 %
-----------------	------



Port Fitting

O- Ring Mount

Product Compliance

For compliance documentation, visit the product page on TE.com>

EU RoHS Directive 2011/65/EU	Compliant
EU ELV Directive 2000/53/EC	Compliant
China RoHS 2 Directive MIIT Order No 32, 2016	No Restricted Materials Above Threshold
EU REACH Regulation (EC) No. 1907/2006	Current ECHA Candidate List: JAN 2025 (247) Candidate List Declared Against: JUNE 2024 (241) Does not contain REACH SVHC
Halogen Content	Low Bromine/Chlorine - Br and Cl < 900 ppm per homogenous material. Also BFR /CFR/PVC Free
Solder Process Capability	Not reviewed for solder process capability

Product Compliance Disclaimer

This information is provided based on reasonable inquiry of our suppliers and represents our current actual knowledge based on the information they provided. This information is subject to change. The part numbers that TE has identified as EU RoHS compliant have a maximum concentration of 0.1% by weight in homogenous materials for lead, hexavalent chromium, mercury, PBB, PBDE, DBP, BBP, DEHP, DIBP, and 0.01% for cadmium, or qualify for an exemption to these limits as defined in the Annexes of Directive 2011/65/EU (RoHS2). Finished electrical and electronic equipment products will be CE marked as required by Directive 2011/65/EU. Components may not be CE marked. Additionally, the part numbers that TE has identified as EU ELV compliant have a maximum concentration of 0.1% by weight in homogenous materials for lead, hexavalent chromium, and mercury, and 0.01% for cadmium, or qualify for an exemption to these limits as defined in the Annexes of Directive 2000/53/EC (ELV). Regarding the REACH Regulation, the information TE provides on SVHC in articles for this part number is based on the latest European Chemicals Agency (ECHA) ‘Guidance on requirements for substances in articles’ posted at this URL: <https://echa.europa.eu/guidance-documents/guidance-on-reach>

Compatible Parts



Also in the Series | MEAS DP86

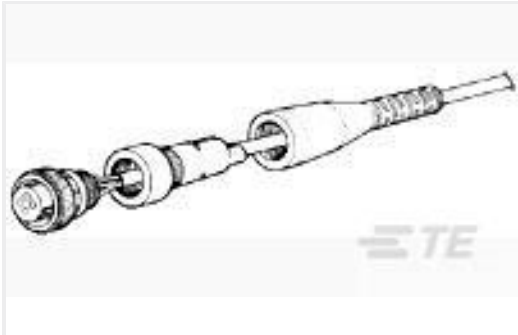


Media Isolated Pressure Sensors(8)

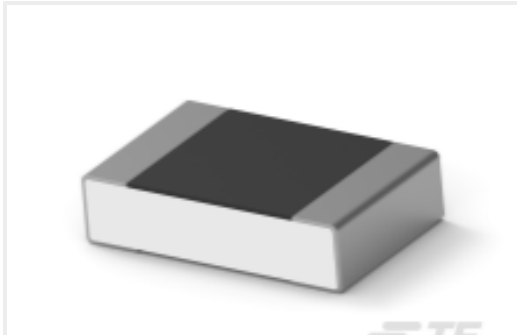
Customers Also Bought



TE Part #CAT-MIPS0027  
Differential MV Output Pressure Sensor



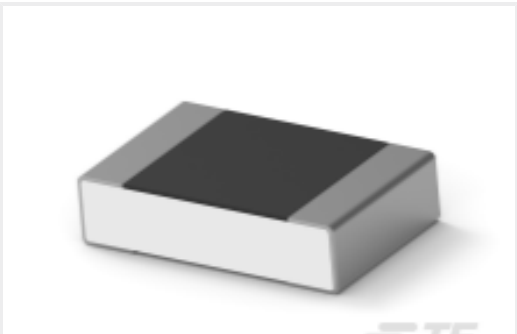
TE Part #207489-1  
FLEXIBLE CABLE BOOT, SIZE 11



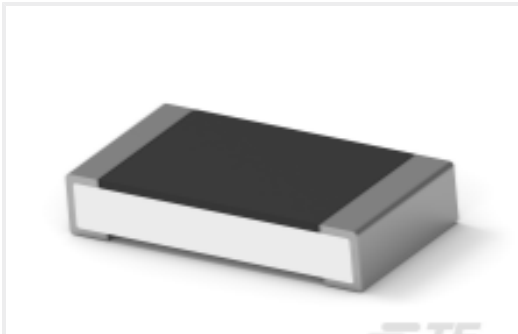
TE Part #4-2176379-4  
RQ 0805 301R 0.1% 10PPM 5K RL



TE Part #66105-4  
III+ SKT,24-20,30AU/FL,LP



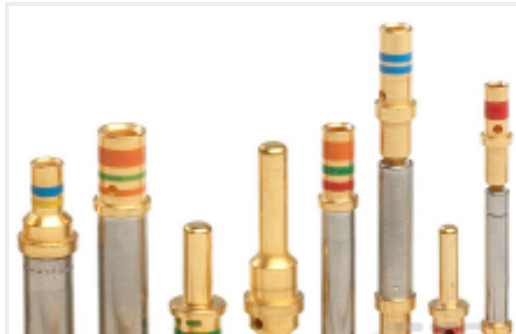
TE Part #6-2176379-3  
RQ 0805 475R 0.1% 10PPM 5K RL



TE Part #6-2176389-3  
RQ 1206 475R 0.1% 10PPM 5K RL



TE Part #5-1437622-8  
KN700A1/4=KNOB ALUM KNURL 1/4



TE Part #100504L  
CONT SOC ASSY

Documents

CAD Files

3D PDF

3D

Customer View Model

ENG\_CVM\_CVM\_DP86-030D\_F.2d\_dxf.zip

English

Customer View Model

ENG\_CVM\_CVM\_DP86-030D\_F.3d\_igs.zip

English

Customer View Model

ENG\_CVM\_CVM\_DP86-030D\_F.3d\_stp.zip

English

By downloading the CAD file I accept and agree to the [Terms and Conditions](#) of use.

Datasheets & Catalog Pages

DP86

English

