



Connectors > Connector Accessories > Connector Strain Relief



Strain Relief Accessory Type: **Boot**

Primary Product Material: **PVC**

Primary Product Color: **Black**

Sealable: **No**

Packaging Method: **Package**

Features

Product Type Features

Strain Relief Accessory Type	Boot
Sealable	No

Body Features

Cable Exit Angle	180°
Primary Product Material	PVC
Primary Product Color	Black

Dimensions

Compatible Cable Diameter Range	0 – 12.7 mm[0 – .5 in]
---------------------------------	------------------------

Usage Conditions

Operating Temperature Range	-29 – 100 °C[-20 – 212 °F]
-----------------------------	----------------------------

Industry Standards

IP Rating	IP6K9K
-----------	--------

Packaging Features

Packaging Method	Package
Packaging Quantity	1



Other

Serviceable	Yes
-------------	-----

Product Compliance


For compliance documentation, visit the product page on TE.com>

EU RoHS Directive 2011/65/EU	Compliant
EU ELV Directive 2000/53/EC	Out of Scope
China RoHS 2 Directive MIIT Order No 32, 2016	No Restricted Materials Above Threshold
EU REACH Regulation (EC) No. 1907/2006	Current ECHA Candidate List: JAN 2025 (247) Candidate List Declared Against: JAN 2025 (247) Does not contain REACH SVHC
Halogen Content	Not Low Halogen - contains Br or Cl > 900 ppm.
Solder Process Capability	Not reviewed for solder process capability


Product Compliance Disclaimer

This information is provided based on reasonable inquiry of our suppliers and represents our current actual knowledge based on the information they provided. This information is subject to change. The part numbers that TE has identified as EU RoHS compliant have a maximum concentration of 0.1% by weight in homogenous materials for lead, hexavalent chromium, mercury, PBB, PBDE, DBP, BBP, DEHP, DIBP, and 0.01% for cadmium, or qualify for an exemption to these limits as defined in the Annexes of Directive 2011/65/EU (RoHS2). Finished electrical and electronic equipment products will be CE marked as required by Directive 2011/65/EU. Components may not be CE marked. Additionally, the part numbers that TE has identified as EU ELV compliant have a maximum concentration of 0.1% by weight in homogenous materials for lead, hexavalent chromium, and mercury, and 0.01% for cadmium, or qualify for an exemption to these limits as defined in the Annexes of Directive 2000/53/EC (ELV). Regarding the REACH Regulation, the information TE provides on SVHC in articles for this part number is based on the latest European Chemicals Agency (ECHA) 'Guidance on requirements for substances in articles' posted at this URL: <https://echa.europa.eu/guidance-documents/guidance-on-reach>

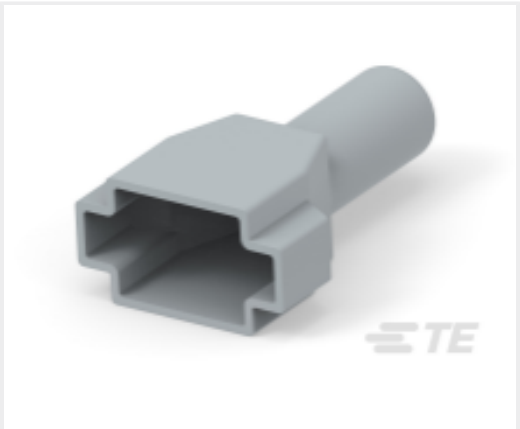
Compatible Parts




TE Part # DT-RT1  
EXT TOOL, FRONT RELEASE



TE Part # CAT-J41-DDPC  
DEUTSCH DT Plug Connectors



TE Part # DT8S-BT  
BOOT, 8P, PLG, ST, GRY



TE Part # CAT-D487-CH8172  
DEUTSCH DT Series Housings & Connectors

Customers Also Bought



TE Part #K1166104  
Battery Disconnecter 35-414-131-S-900



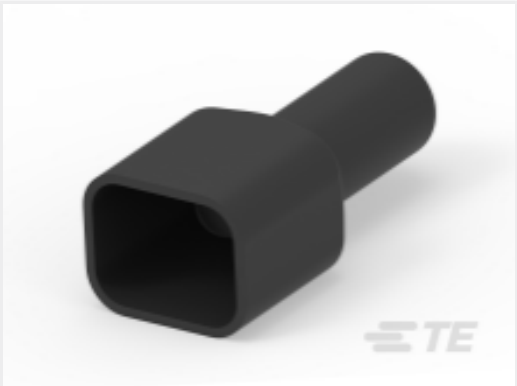
TE Part #ZPF000000000100977  
983-ORS 10-05 PN-A246



TE Part #DT4P-BT-BK  
BOOT, 4P, REC, ST, BLK



TE Part #ZPF000000000007168  
983-ORS 08-03 PN-A246



TE Part #DT8P-BT-BK  
BOOT, 8P, REC, ST, BLK



TE Part #DT2S-BT-BK  
BOOT, 2P, PLG, ST, BLK



TE Part #ZPF000000000007196  
983-ORS 12-03 SN-L



TE Part #ZPF000000000007220  
983-ORS 14-15 PN-L



TE Part #DT12P-BT-BK  
BOOT, 12P, REC, ST, BLK



TE Part #800920-SF  
FN261S-4-06-10

Documents

Product Drawings  
BOOT, 8P, PLG, ST, BLK

English

CAD Files  
3D PDF

3D

Customer View Model  
ENG\_CVM\_CVM\_DT8S-BT-BK\_B.2d\_dxf.zip

English

Customer View Model  
ENG\_CVM\_CVM\_DT8S-BT-BK\_B.3d\_igs.zip

English

Customer View Model  
ENG\_CVM\_CVM\_DT8S-BT-BK\_B.3d\_stp.zip

English

By downloading the CAD file I accept and agree to the Terms and Conditions of use.

Datasheets & Catalog Pages



TERMINALS AND CONNECTORS

English

CONNECTOR SELECTOR

English

Product Specifications

Application Specification

English