

DTM04-2P-P007

✓ ACTIVE

DEUTSCH | DEUTSCH DT, DEUTSCH DTM

TE Internal #: DTM04-2P-P007

2 Position Housing, Housing for Male Terminals, Wire-to-Panel / Wire-to-Wire, 4.19 mm [.165 in] Centerline, Sealable, Black, Wire & Cable, Hybrid

[View on TE.com >](#)



Connectors > Automotive Connectors > Automotive Housings > DEUTSCH DTM Housings



Number of Positions: 2

Connector & Housing Type: **Housing for Male Terminals**

Mating Pin Diameter: 1.02 mm [.04 in]

Connector System: **Wire-to-Panel, Wire-to-Wire**

Centerline (Pitch): 4.19 mm [.165 in]

[All DEUTSCH DTM Housings \(113\)](#)

Features

Product Type Features

Mixed & Hybrid Connector	No
Connector Shape	Rectangular
Connector & Housing Type	Housing for Male Terminals
Connector System	Wire-to-Panel, Wire-to-Wire
Sealable	Yes
Primary Locking Feature	Integrated in Housing
Connector & Contact Terminates To	Wire & Cable

Configuration Features

Blank Cavity Position	0
Connector Modification	J1939
Number of Positions	2
Number of Rows	1



Electrical Characteristics

Operating Voltage	250 VDC
Nominal Voltage Architecture	12 V, 24 V, 48 V

Body Features

Cable Exit Angle	180°
Primary Product Color	Black
Connector & Keying Code	A, B

Contact Features

Contact Size	Size 20
Contact Type	Pin
Mating Pin Diameter	1.02 mm[.04 in]
Contact Current Rating (Max)	7.5 A

Mechanical Attachment

Strain Relief	Add By Accessory
Terminal Position Assurance	Yes
Mating Alignment Type	Keyed
Mating Alignment	With
Connector Mounting Type	Panel Mount

Housing Features

Housing Material	PA GF
Centerline (Pitch)	4.19 mm[.165 in]

Dimensions

Compatible Insulation Diameter Range	1.35 – 3.05 mm[.053 – .12 in]
Product Width	16.54 mm[.651 in]
Product Length	50.8 mm[2 in]
Connector Height	37.41 mm[1.473 in]

Usage Conditions

Operating Temperature (Max)	125 °C[257 °F]
Operating Temperature Range	-55 – 125 °C[-67 – 257 °F]

Operation/Application

Circuit Application	Power
---------------------	-------

Industry Standards



IP Rating	IP68, IP6K9K
Compatible With Agency/Standards Products	SAE J2030
UL Flammability Rating	20mm Flame Test per Standard UL-94

Packaging Features

Packaging Quantity	200
Packaging Method	Box

Other

Serviceable	No
Connector Position Assurance Capable	No

Product Compliance

For compliance documentation, visit the product page on TE.com>

EU RoHS Directive 2011/65/EU	Compliant
EU ELV Directive 2000/53/EC	Compliant
China RoHS 2 Directive MIIT Order No 32, 2016	No Restricted Materials Above Threshold
EU REACH Regulation (EC) No. 1907/2006	Current ECHA Candidate List: JAN 2025 (247) Candidate List Declared Against: JAN 2025 (247) SVHC > Threshold: Dodecamethylcyclohexasiloxane (D6) (.5% in 27519632267) Decamethylcyclopentasiloxane (D5) (.5% in 27519632267) Octamethylcyclotetrasiloxane (D4) (.5% in 27519632267) Article Safe Usage Statements: Wash thoroughly after handling. Recycle if possible and dispose of the article by following all applicable governmental regulations relevant to your geographic location.
Halogen Content	Not Low Halogen - contains Br or Cl > 900 ppm.

Solder Process Capability	Not reviewed for solder process capability
---------------------------	--

Product Compliance Disclaimer

This information is provided based on reasonable inquiry of our suppliers and represents our current actual knowledge based on the information they provided. This information is subject to change. The part numbers that TE has identified as EU RoHS compliant have a maximum concentration of 0.1% by weight in homogenous materials for lead, hexavalent chromium, mercury, PBB, PBDE, DBP, BBP, DEHP, DIBP, and 0.01% for cadmium, or qualify for an exemption to these limits as defined in the Annexes of Directive 2011/65/EU (RoHS2). Finished electrical and electronic equipment products will be CE marked as required by Directive 2011/65/EU. Components may not be CE marked. Additionally, the part numbers that TE has identified as EU ELV compliant have a maximum concentration of 0.1% by weight in homogenous materials for lead, hexavalent chromium, and mercury, and 0.01% for cadmium, or qualify for an exemption to these limits as defined in the Annexes of Directive 2000/53/EC (ELV). Regarding the REACH Regulation, the information TE provides



on SVHC in articles for this part number is based on the latest European Chemicals Agency (ECHA) ‘Guidance on requirements for substances in articles’ posted at this URL: <https://echa.europa.eu/guidance-documents/guidance-on-reach>

Compatible Parts

TE Part # 1028-021-0205
BSHL, 2P, BLK, REC, ST, NW 7.5/8.5

TE Part # CAT-D485-CH8172
DEUTSCH DTM Housings

TE Part # CAT-D487-M8649
DEUTSCH DT Mounting Clips

TE Part # 1924487-2
MOUNTING CLIP, AMPSEAL 16

TE Part # DT-RT1
EXT TOOL, FRONT RELEASE

Also in the Series | DEUTSCH DT

Automotive Connector Caps & Covers
(7)

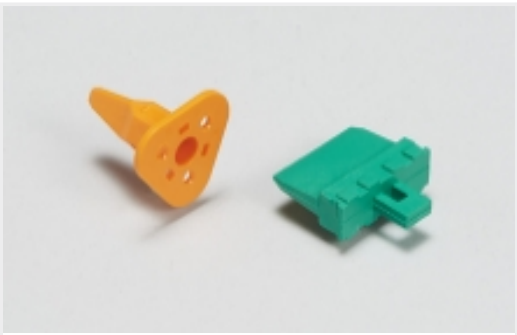
Connector Caps & Covers(1)

Rectangular Connector Housings(1)

Rectangular Power Connectors(77)

Standard Rectangular Connectors(1)

Also in the Series | DEUTSCH DTM



Automotive Connector Locks & Position Assurance(26)



Automotive Headers(38)



Automotive Housings(109)



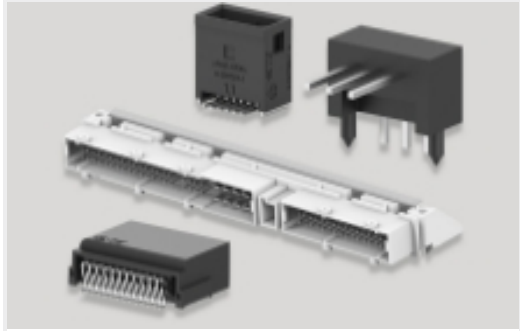
Connector Seals & Cavity Plugs(1)



Connector Strain Relief(28)



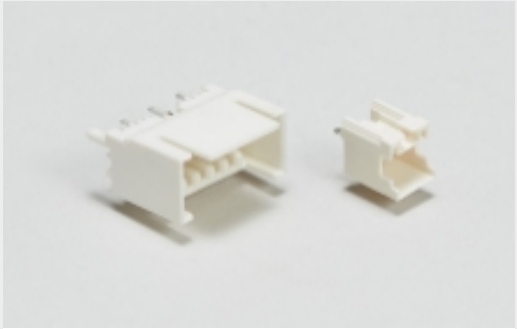
Other Automotive Connector Accessories(7)



PCB Headers & Receptacles(38)

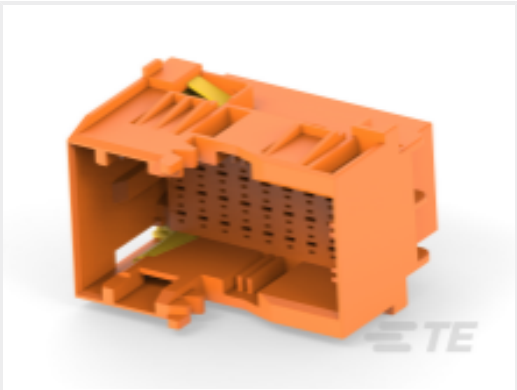


Rectangular Backshells & Clamps(1)



Wire-to-Board Headers & Receptacles (38)

Customers Also Bought



TE Part #1-2112891-6
36POS,TAB 1.5X0.6,TAB HSG,ASSY



TE Part #CAT-D485-CH8172
DEUTSCH DTM Housings



TE Part #DT04-12PA-P027
REC, 12P, GRY, BUSBAR 2X6, GOLD, A



TE Part #CAT-D485-W416
DEUTSCH DTM Wedgelocks



TE Part #2150003-2
OCEAN_2.0_APPLICATOR-E-120F180F-REA



TE Part #HD34-24-31PT-072
REC, 31P, AL, T, THD ADPT, DRAIN, 16, P



TE Part #1-508940-1
DRIVE ROLLER KIT,ELAST. STANDARD,BL.4PCS

Documents



Product Drawings

REC, 2P, BLK, Y-SPLITTER, AU, AB, B

English

CAD Files

Customer View Model

ENG_CVM_CVM_DTM04-2P-P007_99.2d_dxf.zip

English

3D PDF

3D

Customer View Model

ENG_CVM_CVM_DTM04-2P-P007_99.3d_igs.zip

English

Customer View Model

ENG_CVM_CVM_DTM04-2P-P007_99.3d_stp.zip

English

By downloading the CAD file I accept and agree to the [Terms and Conditions](#) of use.

Datasheets & Catalog Pages

TERMINALS AND CONNECTORS

English

ICT Terminals and Connectors Catalogue

English

CONNECTOR SELECTOR

English

Product Specifications

Application Specification

English