



Sensors > Temperature Sensors > Digital Temperature Sensors



Product Width: 4 mm [.157 in]

Sensor Package: QFN16

Resolution: 16 bit, 24 bit

Accuracy (at T_ref): ± .1 °C

Output Interface: I2C, SPI

Features

Product Type Features

Sensor Package	QFN16
----------------	-------

Configuration Features

Electrical Connection	SMD
-----------------------	-----

Electrical Characteristics

Supply Voltage	2.2 – 3.6 V
Supply Current (Max)	12.5 µA

Dimensions

Product Width	4 mm[.157 in]
Product Length	4 mm[.157 in]
Product Height	.85 mm[.033 in]

Usage Conditions

Accuracy T_Range	-5 – 50 °C
Operating Temperature Range	-40 – 125 °C[-40 – 257 °F]
Accuracy (at T_ref)	± .1 °C

Operation/Application

Output Interface	I2C, SPI
------------------	----------

Other

--	--



Resolution	16 bit, 24 bit
------------	----------------

Product Compliance

For compliance documentation, visit the product page on TE.com>

EU RoHS Directive 2011/65/EU	Compliant
EU ELV Directive 2000/53/EC	Compliant
China RoHS 2 Directive MIIT Order No 32, 2016	No Restricted Materials Above Threshold
EU REACH Regulation (EC) No. 1907/2006	Current ECHA Candidate List: JAN 2025 (247) Candidate List Declared Against: JAN 2024 (240) Does not contain REACH SVHC
Halogen Content	Low Halogen - Br, Cl, F, I < 900 ppm per homogenous material. Also BFR/CFR/PVC Free
Solder Process Capability	Not reviewed for solder process capability

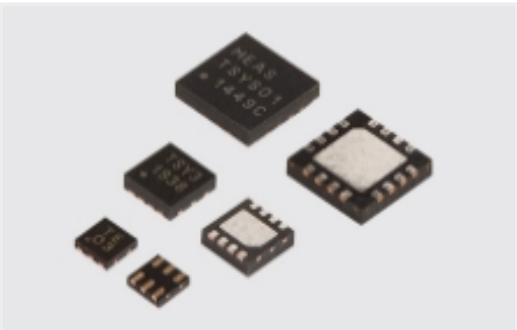
Product Compliance Disclaimer

This information is provided based on reasonable inquiry of our suppliers and represents our current actual knowledge based on the information they provided. This information is subject to change. The part numbers that TE has identified as EU RoHS compliant have a maximum concentration of 0.1% by weight in homogenous materials for lead, hexavalent chromium, mercury, PBB, PBDE, DBP, BBP, DEHP, DIBP, and 0.01% for cadmium, or qualify for an exemption to these limits as defined in the Annexes of Directive 2011/65/EU (RoHS2). Finished electrical and electronic equipment products will be CE marked as required by Directive 2011/65/EU. Components may not be CE marked. Additionally, the part numbers that TE has identified as EU ELV compliant have a maximum concentration of 0.1% by weight in homogenous materials for lead, hexavalent chromium, and mercury, and 0.01% for cadmium, or qualify for an exemption to these limits as defined in the Annexes of Directive 2000/53/EC (ELV). Regarding the REACH Regulation, the information TE provides on SVHC in articles for this part number is based on the latest European Chemicals Agency (ECHA) 'Guidance on requirements for substances in articles' posted at this URL: <https://echa.europa.eu/guidance-documents/guidance-on-reach>

Compatible Parts



Also in the Series | MEAS TSYS



Digital Temperature Sensors(4)



Sensor Development Boards and Evaluation Kits(4)

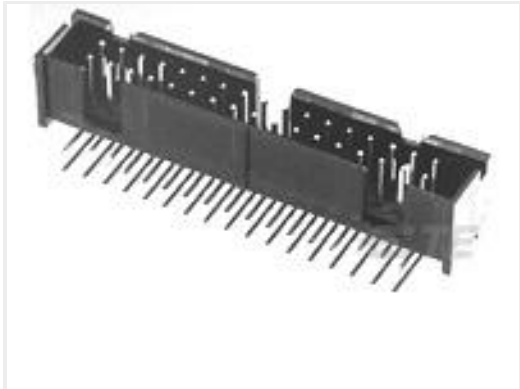
Customers Also Bought



TE Part #9-2176306-4
RP 1E 0.1W 10K7 0.1% 25PPM 5K RL



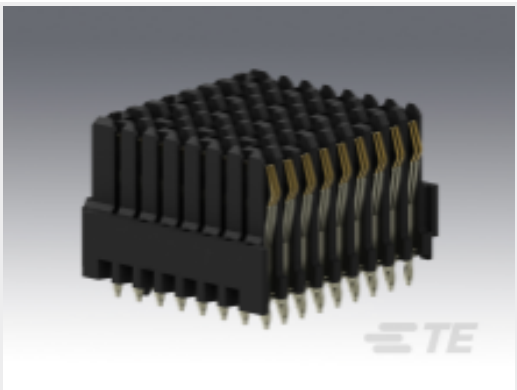
TE Part #338069-6
MICRO-MATCH SMD FTE



TE Part #5103311-5
A/L LOW PRO HDR 20P RA BLACK



TE Part #1-969973-0
2x10P HV100 REC. CON, SMD, GOLD, BLISTER



TE Part #1410186-2
MULTIGIG RT T2 .8" BP HALF LEFT



TE Part #2301845-2
AMPL REC HD20, R/A, 15P, B/L,4-40 A /LOCK



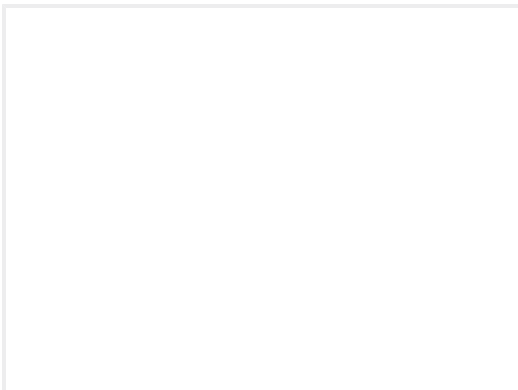
TE Part #2-1879502-2
CRGH2512 5% 100K 2W



TE Part #9-1622826-9
CRG0402 1% 2M0



TE Part #9-1879140-9
RN 0603 196K 0.1% 10PPM 5K RL



TE Part #30F-HND-150S-0000A
150PSI, CLOSED BRIDGE,STD PADS

Documents

CAD Files

3D PDF

3D

Customer View Model

ENG_CVM_CVM_G-NICO-018_1.2d_dxf.zip

English

Customer View Model

ENG_CVM_CVM_G-NICO-018_1.3d_igs.zip



English

Customer View Model

[ENG_CVM_CVM_G-NICO-018_1.3d_stp.zip](#)

English

By downloading the CAD file I accept and agree to the [Terms and Conditions](#) of use.

Datasheets & Catalog Pages

[TSYS01](#)

English