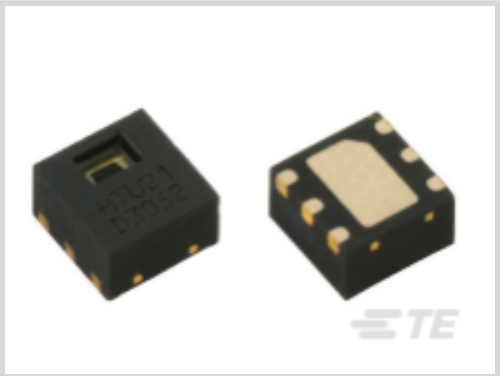




Sensors > Humidity Sensors > Humidity Sensor Components > HTU21D Digital High Accuracy RH/T Sensor



Operating Temperature Range: -40 – 125 °C [-40 – 257 °F]

Humidity Sensor Product Type: RHT

Supply Voltage (Peak): 3.8 V

Current Consumption: .014 mA

Interface Signal Type: Digital

[All HTU21D Digital High Accuracy RH/T Sensor \(6\)](#)

Features

Product Type Features

Humidity Sensor Product Type	RHT
Interface Signal Type	Digital

Electrical Characteristics

Supply Voltage (Peak)	3.8 V
Current Consumption	.014 mA

Usage Conditions

Humidity Operating Range	0 – 100 %RH
Operating Temperature Range	-40 – 125 °C[-40 – 257 °F]

Product Compliance

[For compliance documentation, visit the product page on TE.com>](#)

EU RoHS Directive 2011/65/EU	Compliant
EU ELV Directive 2000/53/EC	Out of Scope
China RoHS 2 Directive MIIT Order No 32, 2016	No Restricted Materials Above Threshold
EU REACH Regulation (EC) No. 1907/2006	Current ECHA Candidate List: JAN 2025 (247) Candidate List Declared Against: JUNE 2024 (241)

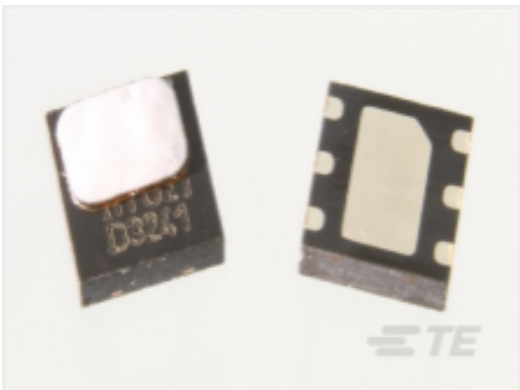


	Does not contain REACH SVHC
Halogen Content	Low Halogen - Br, Cl, F, I < 900 ppm per homogenous material. Also BFR/CFR/PVC Free
Solder Process Capability	Not reviewed for solder process capability

Product Compliance Disclaimer

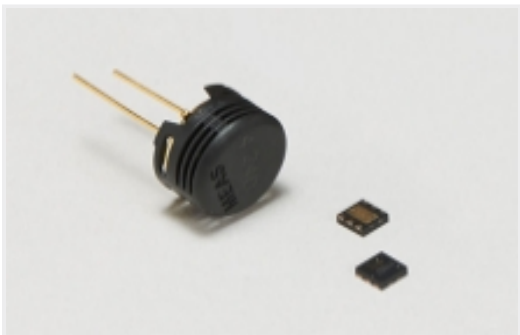
This information is provided based on reasonable inquiry of our suppliers and represents our current actual knowledge based on the information they provided. This information is subject to change. The part numbers that TE has identified as EU RoHS compliant have a maximum concentration of 0.1% by weight in homogenous materials for lead, hexavalent chromium, mercury, PBB, PBDE, DBP, BBP, DEHP, DIBP, and 0.01% for cadmium, or qualify for an exemption to these limits as defined in the Annexes of Directive 2011/65/EU (RoHS2). Finished electrical and electronic equipment products will be CE marked as required by Directive 2011/65/EU. Components may not be CE marked. Additionally, the part numbers that TE has identified as EU ELV compliant have a maximum concentration of 0.1% by weight in homogenous materials for lead, hexavalent chromium, and mercury, and 0.01% for cadmium, or qualify for an exemption to these limits as defined in the Annexes of Directive 2000/53/EC (ELV). Regarding the REACH Regulation, the information TE provides on SVHC in articles for this part number is based on the latest European Chemicals Agency (ECHA) 'Guidance on requirements for substances in articles' posted at this URL: <https://echa.europa.eu/guidance-documents/guidance-on-reach>

Compatible Parts




TE Part # HPP845E131R5
[HTU21DF RH/T SENSOR IC B5000](#)


Also in the Series | [MEAS LM](#)



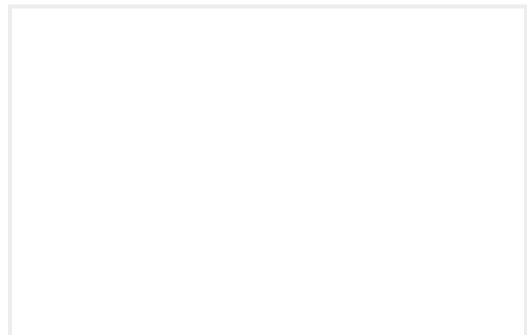
Humidity Sensor Components(1)



Industrial Pressure Transducers(4)

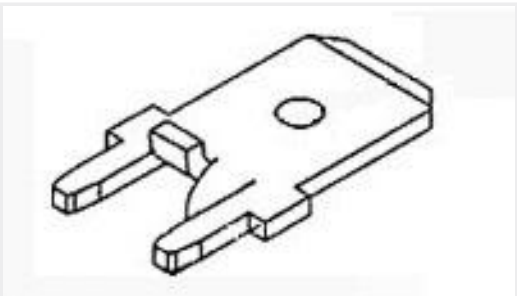


Pressure Transducers(4)



Submersible Pressure Transducers(4)

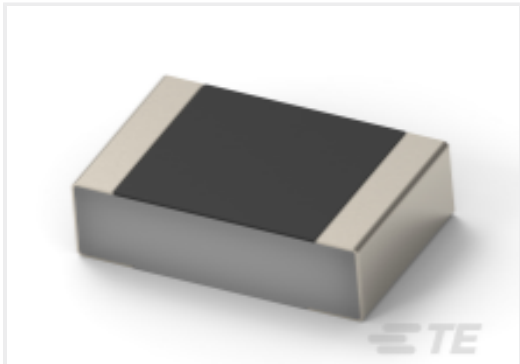
Customers Also Bought



TE Part #1217167-1
250 FASTON,PCB TAB,TCBR



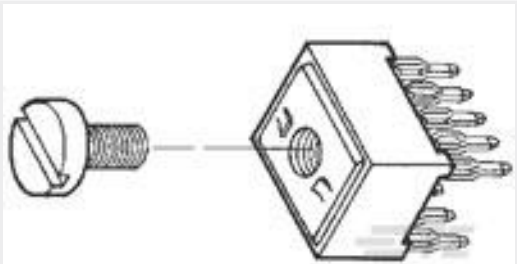
TE Part #5749231-1
Mini DIN, 6 pos, R/A, Shield



TE Part #7-2176453-3
CPF 0201 32K4 0.1% 25ppm 1K RL



TE Part #3-2158000-5
RZ01-1A4-D005-R



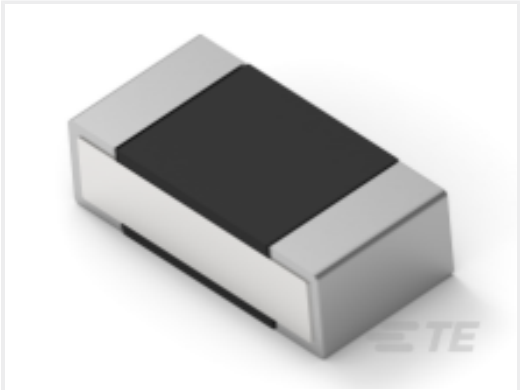
TE Part #9-55556-0
10 POWER TAP ASSY WITH SCREW #6-32



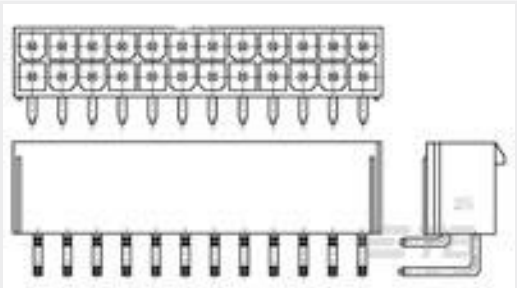
TE Part #85-100A-FC
100 PSIA FLUSH MOUNT PRESSURE SENSOR



TE Part #4-2176347-0
CRGCQ 2010 18K 1%



TE Part #9-2176311-3
RP 1E 0.1W 10K5 0.1% 25PPM 1K RL



TE Part #1586042-4
4P VAL-U-LOK R/A HDR V0



TE Part #ANT-868-JJB-ST
Antenna Mini Straight 868MHz THM

Documents

CAD Files

3D PDF

3D

Customer View Model

ENG_CVM_CVM_HPP845E031R5_B.2d_dxf.zip

English

Customer View Model

ENG_CVM_CVM_HPP845E031R5_B.3d_igs.zip

English

Customer View Model

ENG_CVM_CVM_HPP845E031R5_B.3d_stp.zip

English

By downloading the CAD file I accept and agree to the [Terms and Conditions](#) of use.

Datasheets & Catalog Pages

HTU21D

English