

ANT-2.4-FPC-LV100MX

✓ ACTIVE

TE Internal #: L9000045-01

Flexible PCB (FPC) Antenna, Single Band, Bluetooth / ISM / Zigbee,
Internal/Embedded Mount, Adhesive Mount, MMCX,
Omnidirectional, Single Port

[View on TE.com >](#)



Antennas



Antenna Type: **Flexible PCB (FPC)**

Band Type: **Single Band**

Primary Application: **Bluetooth, ISM, Zigbee**

Wireless Application: **Bluetooth, ISM, Zigbee**

Mounting Location: **Internal/Embedded**

Features

Product Type Features

Antenna Termination	MMCX
Antenna Product Type	Antenna

Configuration Features

Antenna Type	Flexible PCB (FPC)
Band Type	Single Band
Mounting Location	Internal/Embedded
Port Configuration	Single Port

Signal Characteristics

Frequency Category	350 – 520
Peak Gain	3 < 6 dBi

Mechanical Attachment

Mounting Type	Adhesive Mount
---------------	----------------

Operation/Application

Directionality	Omnidirectional
----------------	-----------------

Industry Standards

Primary Application	Bluetooth, ISM, Zigbee
Wireless Application	Bluetooth, ISM, Zigbee



Product Compliance

For compliance documentation, visit the product page on TE.com>

EU RoHS Directive 2011/65/EU	Compliant with Exemptions
EU ELV Directive 2000/53/EC	Not Yet Reviewed
China RoHS 2 Directive MIIT Order No 32, 2016	Restricted Materials Above Threshold
EU REACH Regulation (EC) No. 1907/2006	Current ECHA Candidate List: JAN 2025 (247) Not Yet Reviewed
Halogen Content	Low Halogen - Br, Cl, F, I < 900 ppm per homogenous material. Also BFR/CFR/PVC Free
Solder Process Capability	Not reviewed for solder process capability

Product Compliance Disclaimer

This information is provided based on reasonable inquiry of our suppliers and represents our current actual knowledge based on the information they provided. This information is subject to change. The part numbers that TE has identified as EU RoHS compliant have a maximum concentration of 0.1% by weight in homogenous materials for lead, hexavalent chromium, mercury, PBB, PBDE, DBP, BBP, DEHP, DIBP, and 0.01% for cadmium, or qualify for an exemption to these limits as defined in the Annexes of Directive 2011/65/EU (RoHS2). Finished electrical and electronic equipment products will be CE marked as required by Directive 2011/65/EU. Components may not be CE marked. Additionally, the part numbers that TE has identified as EU ELV compliant have a maximum concentration of 0.1% by weight in homogenous materials for lead, hexavalent chromium, and mercury, and 0.01% for cadmium, or qualify for an exemption to these limits as defined in the Annexes of Directive 2000/53/EC (ELV). Regarding the REACH Regulations, TE’s information on SVHC in articles for this part number is still based on the European Chemical Agency (ECHA) ‘Guidance on requirements for substances in articles’(Version: 2, April 2011), applying the 0.1% weight on weight concentration threshold at the finished product level. TE is aware of the European Court of Justice ruling of September 10th, 2015 also known as O5A (Once An Article Always An Article) stating that, in case of ‘complex object’, the threshold for a SVHC must be applied to both the product as a whole and simultaneously to each of the articles forming part of its composition. TE has evaluated this ruling based on the new ECHA “Guidance on requirements for substances in articles” (June 2017, version 4.0) and will be updating its statements accordingly.

Compatible Parts



TE Part # CONMMCX013-T
MMCX Jack 50 Ohm PCB Edge Mount



TE Part # CONMMCX001
MMCX Jack 50 Ohm PCB Through Hole



TE Part # CONMMCX002
MMCX Jack 50 Ohm PCB Through Hole



TE Part # CONMMCX002-SMD-T
MMCX Jack 50 Ohm PCB Surface Mount

Customers Also Bought

ANT-2.4-FPC-LV100MX

Flexible PCB (FPC) Antenna, Single Band, Bluetooth / ISM / Zigbee, Internal /Embedded Mount, Adhesive Mount, MMCX, Omnidirectional, Single Port



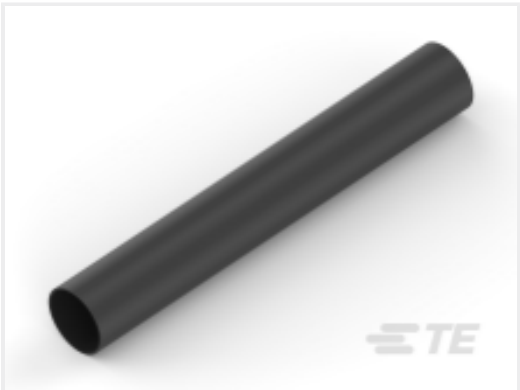
TE Part #962938-1
MPT REC 9.5 Contact SWS Sn



TE Part #1-917484-2
DYNAMIC D-3 REC CONT. 2L AU 0.38



TE Part #CAT-H396-CH8172
DEUTSCH HDP20 Housings



TE Part #CAT-HST-DWP125
DWP-125 Heat Shrink Tubing



TE Part #1SNG614003R0000
EM-EMC4-M20-MET-A



TE Part #3-1904117-4
V23134J0165X537-EV-CBOX



TE Part #FG24008
OMNI,FG,2400-2485MHZ 2442.5MHz,
6dBd

Documents

Product Drawings

Antenna 2.4 FPC LV 7x45 150 MMCX

English

CAD Files

Customer View Model

ENG_CVM_CVM_L9000045-01_B.3d_igs.zip

English

Customer View Model

ENG_CVM_CVM_L9000045-01_B.3d_stp.zip

English

3D PDF

3D

Customer View Model

ENG_CVM_CVM_L9000045-01_B.2d_dxf.zip

English

By downloading the CAD file I accept and agree to the [Terms and Conditions](#) of use.

Datasheets & Catalog Pages

Rigid Embedded Dipole WiFi 6 Antenna

English