

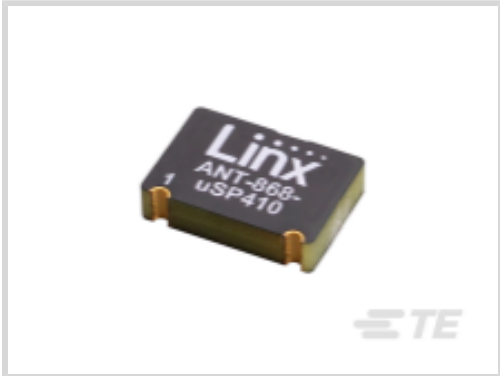
ANT-868-USP410

✓ ACTIVE

TE Internal #: L9000152-01  
PCB Antenna, Single Band, LPWAN / LoRaWAN, Internal  
/Embedded Mount, Surface Mount, Solder, Omnidirectional, Single  
Port, 0 < 3 dBi Peak Gain  
[View on TE.com >](#)



Antennas



Antenna Type: **PCB**  
Band Type: **Single Band**  
Primary Application: **LoRaWAN, LPWAN**  
Wireless Application: **LoRaWAN, LPWAN, Wi-Fi**  
Mounting Location: **Internal/Embedded**

Features

Product Type Features

Antenna Termination	Solder
Antenna Product Type	Antenna

Configuration Features

Antenna Style	PCB
Antenna Type	PCB
Band Type	Single Band
Mounting Location	Internal/Embedded
Port Configuration	Single Port

Electrical Characteristics

Impedance	50 Ω
VSWR (Max)	<2:1

Signal Characteristics

Frequency Band	868 MHz
Gain (Max)	.7 dB
Frequency Category	862 – 870
Peak Gain	0 < 3 dBi

Body Features

Product Weight	.6 g[.02116 oz]
----------------	-----------------



Mechanical Attachment

Polarization	Linear
Mounting Type	Surface Mount

Dimensions

Product Width	9.14 mm[.36 in]
Product Length	13.2 mm[.52 in]
Product Height	2.9 mm[.11 in]

Operation/Application

Directionality	Omnidirectional
----------------	-----------------

Industry Standards

Primary Application	LoRaWAN, LPWAN
Wireless Application	LoRaWAN, LPWAN, Wi-Fi

Packaging Features

Packaging Method	Reel/Carton
------------------	-------------

Product Compliance

For compliance documentation, visit the product page on TE.com>

EU RoHS Directive 2011/65/EU	Compliant
EU ELV Directive 2000/53/EC	Not Yet Reviewed
China RoHS 2 Directive MIIT Order No 32, 2016	No Restricted Materials Above Threshold
EU REACH Regulation (EC) No. 1907/2006	Current ECHA Candidate List: JAN 2025 (247) Not Yet Reviewed
Halogen Content	Low Halogen - Br, Cl, F, I < 900 ppm per homogenous material. Also BFR/CFR/PVC Free
Solder Process Capability	Not reviewed for solder process capability

Product Compliance Disclaimer

This information is provided based on reasonable inquiry of our suppliers and represents our current actual knowledge based on the information they provided. This information is subject to change. The part numbers that TE has identified as EU RoHS compliant have a maximum concentration of 0.1% by weight in homogenous materials for lead, hexavalent chromium, mercury, PBB, PBDE, DBP, BBP, DEHP, DIBP, and 0.01% for cadmium, or qualify for an exemption to these limits as defined in the Annexes of Directive 2011/65/EU (RoHS2). Finished electrical and electronic equipment products will be CE marked as required by Directive 2011/65/EU. Components may not be CE marked. Additionally, the part numbers that TE has identified as EU ELV compliant have a maximum concentration of 0.1% by weight in homogenous materials for lead, hexavalent chromium, and mercury, and 0.01% for cadmium, or qualify for an exemption to these limits as defined in the Annexes of Directive 2000/53/EC (ELV). Regarding the REACH Regulations, TE’s information on SVHC in articles for this part number is still based on the European Chemical Agency (ECHA) ‘Guidance on requirements for



substances in articles’(Version: 2, April 2011), applying the 0.1% weight on weight concentration threshold at the finished product level. TE is aware of the European Court of Justice ruling of September 10th, 2015 also known as O5A (Once An Article Always An Article) stating that, in case of ‘complex object’, the threshold for a SVHC must be applied to both the product as a whole and simultaneously to each of the articles forming part of its composition. TE has evaluated this ruling based on the new ECHA “Guidance on requirements for substances in articles” (June 2017, version 4.0) and will be updating its statements accordingly.

Compatible Parts



TE Part # ANT-868-CPA  
Antenna CER Patch 25mm Sq 868MHz Adh



TE Part # ANT-868-PW-LP  
Antenna 1/4 Wave 868MHz Screw #6



TE Part # ANT-868-CHP-T  
Antenna Chip T&R 868MHz SMT



TE Part # ANT-868-HESM  
Antenna 1/4 Wave Coil 868MHz SMT



TE Part # ANT-868-JJB-ST  
Antenna Mini Straight 868MHz THM



TE Part # ANT-868-JJB-RA  
Antenna Mini R-Angle 868MHz THM

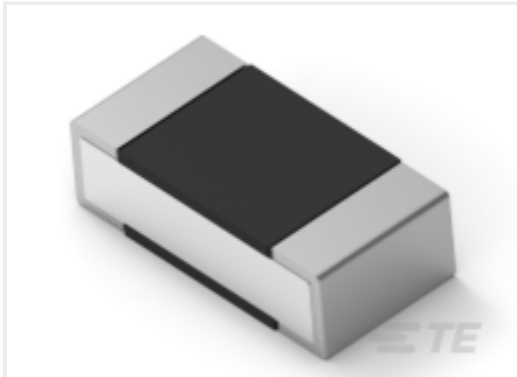
Customers Also Bought



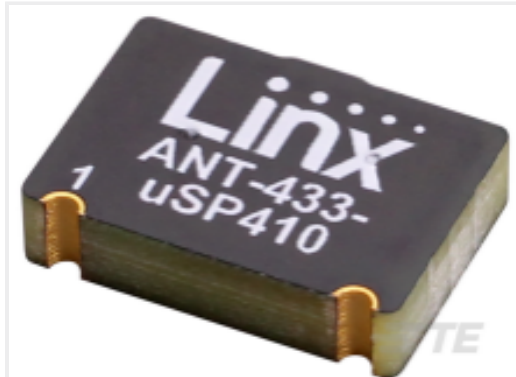
TE Part #3-2176070-1  
3521 180R 1% 2W



TE Part #L9000126-01  
Antenna FPC Sub-6 LTE/5G 1.13 100 UFL



TE Part #7-2176312-9  
RP 1E 0.1W 80K6 0.1% 25PPM 1K RL



TE Part #ANT-433-USP410  
Antenna uSP PCB RPC 410 433MHz SMT T&R



TE Part #CAT-M5833-F3492A  
Female-on-Board Connector, Top Entry



TE Part #2176186-4  
CRGH1206 1% 220R 0.5W



TE Part #1-1393194-0  
T77S1D10-24



TE Part #2-32953-1  
PG R 22-16 COMM 22-18 MIL 1/4



TE Part #1775838-2  
mSATA/mini PCI-E 5.6H Type I G/F

Documents

Product Drawings

Antenna uSP PCB RPC 410 868MHz SMT T&R

English

CAD Files

3D PDF

3D

Customer View Model

ENG\_CVM\_CVM\_L9000152-01\_B.3d\_stp.zip

English

Customer View Model

ENG\_CVM\_CVM\_L9000152-01\_B.2d\_dxf.zip

English

Customer View Model

ENG\_CVM\_CVM\_L9000152-01\_B.3d\_igs.zip

English

By downloading the CAD file I accept and agree to the [Terms and Conditions](#) of use.

Datasheets & Catalog Pages

Embedded 868 MHz LPWA Antenna

English