



M12 Connector

TE Internal #: T4110402041-000

4 Position Circular Connector, Cable-to-Cable, Sealable, Wire & Cable, Signal, Cable Mount (Free-Hanging), Reverse Gender, Unplated, M12 Connector

[View on TE.com >](#)

Connectors > Circular Connectors > Standard Circular Connectors > M12 Field Installable Unshielded



Number of Positions: 4

Connector System: **Cable-to-Cable**

Sealable: **Yes**

Connector & Contact Terminates To: **Wire & Cable**

Contact Current Rating (Max): **4 A**

[All M12 Field Installable Unshielded \(102\)](#)

Features

Product Type Features

Assembly Requirement	Factory Assembled
Circular Connector Shell Type	All Plastic
Connector Product Type	Connector Assembly
Assembly Type	Electrical Connector
Connector System	Cable-to-Cable
Sealable	Yes
Connector & Contact Terminates To	Wire & Cable
Circular Connector Type	Receptacle
Shell Type	Plastic

Configuration Features

Factory Installed Backshell	No
Number of Positions	4
Number of Power Positions	0



Number of Signal Positions	4
Contacts Preloaded	Yes
Electrical Characteristics	
Operating Voltage	250 VDC
Body Features	
O-Ring Material	Silicone
Environmental Protection	IP67
Environmental Protection Type	Elastomer Sealed
Primary Product Color	Black
Peripheral Seal Material	Silicone
Shell Plating Material	Unplated
Shell Base Material	Plastic
Circular Connector Insulation Material Type	Polyamide 66 GF25
Hermetically Sealed	Yes
Contact Features	
Contact Current Rating (Max)	4 A
Reverse Gender	Yes
Circular Connector Contact Type	Socket
Mechanical Attachment	
Mating Retention Type	Threaded Coupling
Mating Alignment	With
Connector Mounting Type	Cable Mount (Free-Hanging)
Polarization Code	B
Mating Alignment Type	Keyed
Housing Features	
Circular Connector Shell Size	20
Dimensions	
Wire Size	18 – 24 AWG
Usage Conditions	
IP Dust Sealing Level	6
IP Water Sealing Level	IP67
Operating Temperature Range	-40 – 85 °C[-40 – 185 °F]



Operation/Application	
Durability Rating	100 Cycles
Circuit Application	Signal
Shielded	No
Industry Standards	
UL Flammability Rating	UL 94HB
Packaging Features	
Packaging Quantity	1
Other	
Field Serviceable	Yes

Product Compliance

For compliance documentation, visit the product page on TE.com>

EU RoHS Directive 2011/65/EU	Compliant with Exemptions
EU ELV Directive 2000/53/EC	Compliant with Exemptions
China RoHS 2 Directive MIIT Order No 32, 2016	Restricted Materials Above Threshold
EU REACH Regulation (EC) No. 1907/2006	Current ECHA Candidate List: JAN 2025 (247) Candidate List Declared Against: JAN 2025 (247) SVHC > Threshold: Pb (4% in 8824890607) <b>Article Safe Usage Statements:</b> Do not eat, drink or smoke when using this product. Wash thoroughly after handling. Recycle if possible and dispose of the article by following all applicable governmental regulations relevant to your geographic location.
Halogen Content	Not Low Halogen - contains Br or Cl > 900 ppm.
Solder Process Capability	Not applicable for solder process capability

Product Compliance Disclaimer

This information is provided based on reasonable inquiry of our suppliers and represents our current actual knowledge based on the information they provided. This information is subject to change. The part numbers that TE has identified as EU RoHS compliant have a maximum concentration of 0.1% by weight in homogenous materials for lead, hexavalent chromium, mercury, PBB, PBDE, DBP, BBP, DEHP, DIBP, and 0.01% for cadmium, or qualify for an exemption to these limits as defined in the Annexes of Directive 2011/65/EU (RoHS2). Finished electrical and electronic equipment products will be CE marked as required by Directive 2011/65/EU. Components may not be CE marked. Additionally, the part numbers that TE has identified as EU ELV compliant have a maximum concentration of 0.1% by weight in homogenous materials for lead, hexavalent chromium, and mercury, and 0.01% for cadmium, or qualify for an exemption to these limits as defined in the Annexes of Directive 2000/53/EC (ELV). Regarding the REACH Regulation, the information TE provides on SVHC in articles for this part number is based on the latest European Chemicals Agency (ECHA) 'Guidance on requirements for substances in articles' posted at this URL: <https://echa.europa.eu/guidance-documents/guidance-on-reach>



Compatible Parts



TE Part # 2498638-1  
M12 MALE, B CODE, 4P, 10.5MM SMT



TE Part # 494577-E  
M12 MALE. B CODE, 4P, 17MM SMT



TE Part # 494705-E  
M12 MALE, B CODE, 4P, 10.5MM SMT



TE Part # T4111402041-000  
M12,MALE,STRAIGHT,B CODE,4P, PG9,GOLD

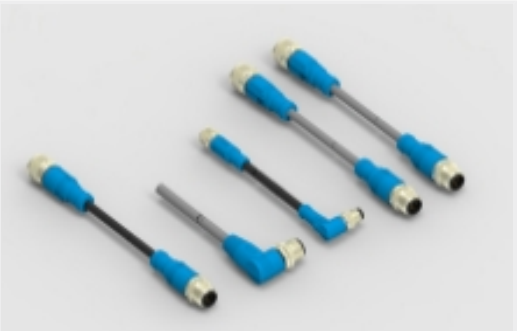
Also in the Series | M12 Connector



Connector Hardware(11)



Connector Seals & Cavity Plugs(4)



M8/M12 Cable Assemblies(230)



Standard Circular Connectors(793)

Customers Also Bought



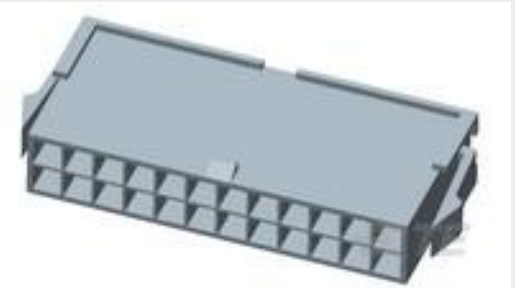
TE Part #5-6609107-1  
PS0S0DSX0=C1107



TE Part #2120958-1  
M8 MALE SOCKET WITH WIRES, 0.25 SQMM



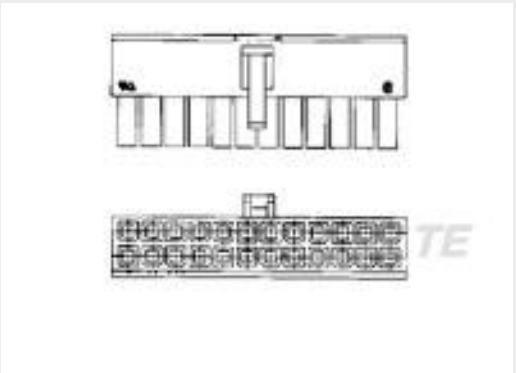
TE Part #T4130412041-000  
M12,REAR MOUNT,MALE,B,4P, SOLDER WIRE



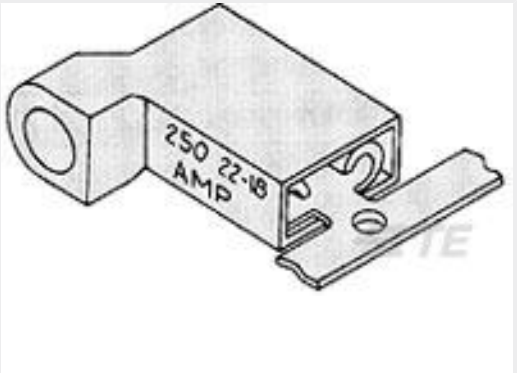
TE Part #1969605-4  
4P PM PLUG VAL-U-LOK PM GW



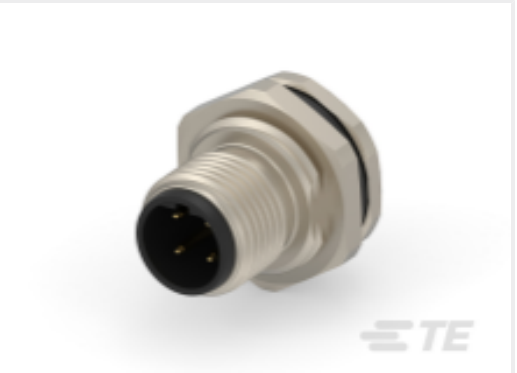
TE Part #T4071017041-001  
M8.FMLE.PNLREAR.4POS.STR WIRE



TE Part #1586765-4  
4P RCPT VAL-U-LOK GW



TE Part #2-520337-2  
ULTRA-FAST 187 ASY REC 22-18 TPBR



TE Part #T4171010404-001  
M12,REAR MOUNTING,MALE,B,4P,0.2 M WIRE



Documents

Product Drawings

M12,FEMALE,STRAIGHT,B CODE,4P,PG9,GOLD

English

CAD Files

Customer View Model

ENG\_CVM\_CVM\_T4110402041-000\_B.3d\_igs.zip

English

Customer View Model

ENG\_CVM\_CVM\_T4110402041-000\_B.3d\_stp.zip

English

Customer View Model

ENG\_CVM\_CVM\_T4110402041-000\_B.2d\_dxf.zip

English

3D PDF

3D

By downloading the CAD file I accept and agree to the [Terms and Conditions](#) of use.

Datasheets & Catalog Pages

M8 / M12 Connector System Catalog

English

M8 / M12 Connector System Catalog

Japanese

Product Specifications

Application Specification

English

Agency Approvals

UL

English