



M12 Connector

TE Internal #: T4131012081-000

8 Position Circular Connector, Wire-to-Panel, Sealable, Wire & Cable, Signal, Panel Mount, Reverse Gender, Nickel, Copper Alloy, A Code, M12 Connector

[View on TE.com >](#)

Connectors > Circular Connectors > Standard Circular Connectors > M12 Panel Mount Solder Cups



Number of Positions: 8

Connector System: **Wire-to-Panel**

Sealable: **Yes**

Connector & Contact Terminates To: **Wire & Cable**

Contact Current Rating (Max): 2 A

[All M12 Panel Mount Solder Cups \(56\)](#)

Features

Product Type Features

| | |
|-----------------------------------|----------------------|
| Assembly Requirement | Factory Assembled |
| Circular Connector Shell Type | Metal-Shell |
| Connector Product Type | Connector Assembly |
| Assembly Type | Electrical Connector |
| Connector System | Wire-to-Panel |
| Sealable | Yes |
| Connector & Contact Terminates To | Wire & Cable |
| Circular Connector Type | Receptacle |
| Shell Type | Metal |

Configuration Features

| | |
|---------------------------------------|----|
| Keying & Polarized Position Locations | A |
| Factory Installed Backshell | No |
| Number of Positions | 8 |



| | |
|----------------------------|-----|
| Number of Power Positions | 0 |
| Number of Signal Positions | 8 |
| Contacts Preloaded | Yes |

Electrical Characteristics

| | |
|-------------------|--------|
| Operating Voltage | 30 VDC |
|-------------------|--------|

Body Features

| | |
|---|-------------------|
| O-Ring Material | Silicone |
| Environmental Protection | IP67 |
| Environmental Protection Type | Elastomer Sealed |
| Primary Product Color | Black |
| Peripheral Seal Material | Silicone |
| Shell Plating Material | Nickel |
| Shell Base Material | Copper Alloy |
| Circular Connector Insulation Material Type | Polyamide 66 GF25 |
| Hermetically Sealed | Yes |

Contact Features

| | |
|---------------------------------|--------|
| Contact Current Rating (Max) | 2 A |
| Reverse Gender | Yes |
| Circular Connector Contact Type | Socket |

Termination Features

| | |
|------------------------------------|--------|
| Termination Method to Wire & Cable | Solder |
|------------------------------------|--------|

Mechanical Attachment

| | |
|--------------------------|-------------------|
| Mating Retention Type | Threaded Coupling |
| Panel Mount Feature Type | Screw Nut |
| Mating Alignment | With |
| Connector Mounting Type | Panel Mount |
| Polarization Code | A |
| Mating Alignment Type | Keyed |

Housing Features

| | |
|-------------------------------|----|
| Circular Connector Shell Size | 18 |
|-------------------------------|----|

Dimensions

| | |
|-----------|-------------|
| Wire Size | 24 – 26 AWG |
|-----------|-------------|



Usage Conditions

| | |
|-----------------------------|---------------------------|
| IP Water Sealing Level | IP67 |
| Operating Temperature Range | -40 – 85 °C[-40 – 185 °F] |

Operation/Application

| | |
|---------------------|------------|
| Durability Rating | 100 Cycles |
| Circuit Application | Signal |
| Shielded | No |

Industry Standards

| | |
|------------------------|---------|
| UL Flammability Rating | UL 94HB |
|------------------------|---------|

Packaging Features

| | |
|--------------------|---|
| Packaging Quantity | 1 |
|--------------------|---|

Product Compliance

For compliance documentation, visit the product page on TE.com>

| | |
|---|--|
| EU RoHS Directive 2011/65/EU | Compliant with Exemptions |
| EU ELV Directive 2000/53/EC | Compliant with Exemptions |
| China RoHS 2 Directive MIIT Order No 32, 2016 | Restricted Materials Above Threshold |
| EU REACH Regulation (EC) No. 1907/2006 | Current ECHA Candidate List: JAN 2025 (247) Candidate List Declared Against: JAN 2025 (247) SVHC > Threshold: Pb (4% in 8824882136) Article Safe Usage Statements: Do not eat, drink or smoke when using this product. Wash thoroughly after handling. Recycle if possible and dispose of the article by following all applicable governmental regulations relevant to your geographic location. |
| Halogen Content | Low Halogen - Br, Cl, F, I < 900 ppm per homogenous material. Also BFR/CFR/PVC Free |
| Solder Process Capability | Not applicable for solder process capability |

Product Compliance Disclaimer

This information is provided based on reasonable inquiry of our suppliers and represents our current actual knowledge based on the information they provided. This information is subject to change. The part numbers that TE has identified as EU RoHS compliant have a maximum concentration of 0.1% by weight in homogenous materials for lead, hexavalent chromium, mercury, PBB, PBDE, DBP, BBP, DEHP, DIBP, and 0.01% for cadmium, or qualify for an exemption to these limits as defined in the Annexes of Directive 2011/65/EU (RoHS2). Finished electrical and electronic equipment products will be CE marked as required by Directive 2011/65/EU. Components may not be CE marked. Additionally, the part numbers that TE has identified as EU ELV compliant have a maximum concentration of 0.1% by weight in homogenous materials for lead, hexavalent chromium, and mercury, and 0.01% for cadmium, or qualify for an exemption to these limits as defined in the Annexes of Directive 2000/53/EC (ELV). Regarding the REACH Regulation, the information TE provides



on SVHC in articles for this part number is based on the latest European Chemicals Agency (ECHA) ‘Guidance on requirements for substances in articles’ posted at this URL: <https://echa.europa.eu/guidance-documents/guidance-on-reach>

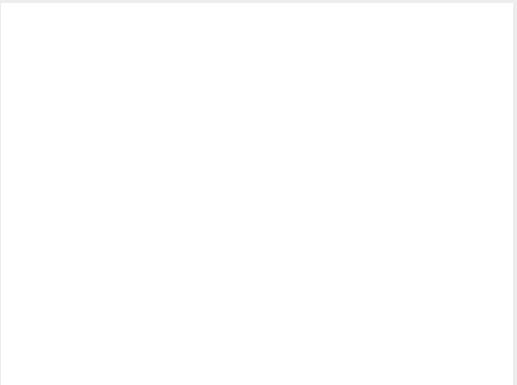
Compatible Parts



TE Part # T4113002081-000
M12,MALE,RA,A CODE,8P,PG9,GOLD



TE Part # T4113002081-001
M12,M,8P RA,A CODE,PG9,GOLD,N



TE Part # 2373341-1
M12 A CODE 8P,FEMALE, DOU END COMBINED



TE Part # 2430565-1
M12 A CODE 8P,FEMALE,DOU END COMBINED



TE Part # 1986784-8
M12 ST, MALE/MALE 8 POS, PVC, 8M, SHLD

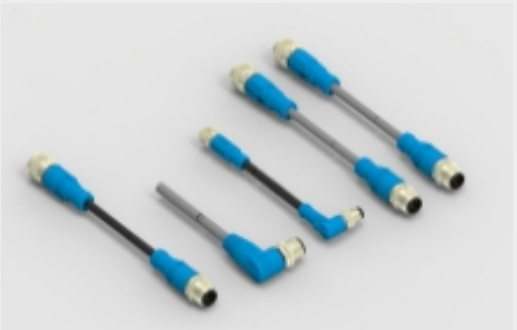
Also in the Series | M12 Connector



Connector Hardware(11)



Connector Seals & Cavity Plugs(4)



M8/M12 Cable Assemblies(230)



Standard Circular Connectors(793)

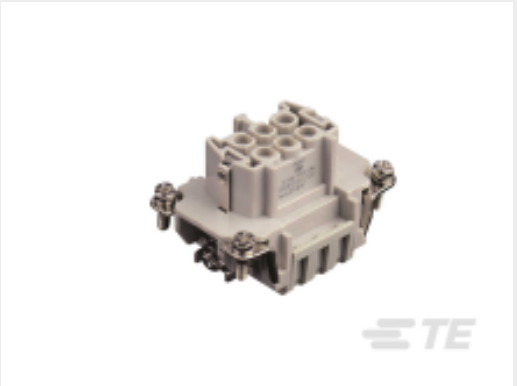
Customers Also Bought



TE Part #1SNG626025R0000
EP-SGL-M16-LGR-I



TE Part #T2040064101-000
HE-006-MC



TE Part #T2040064201-000
HE-006-FC



TE Part #CAT-C73765-M1E
M12 Field Installable Unshielded



Documents

CAD Files

Customer View Model

ENG_CVM_CVM_T4131012081-000_B.3d_igs.zip

English

Customer View Model

ENG_CVM_CVM_T4131012081-000_B.3d_stp.zip

English

Customer View Model

ENG_CVM_CVM_T4131012081-000_B.2d_dxf.zip

English

3D PDF

3D

By downloading the CAD file I accept and agree to the [Terms and Conditions](#) of use.

Datasheets & Catalog Pages

M8 / M12 Connector System Catalog

English

M8 / M12 Connector System Catalog

Japanese

M12 PCB/Panel Connectors 8/12Pin

English

Product Specifications

Application Specification

English

Agency Approvals

UL

English