



Sensors > Pressure Sensors > Pressure Transducers



Pressure Sensor Type: **Industrial Pressure Transducer**
Pressure: **14 bar [203.05 psi]**
Pressure Type: **Absolute**
Supply Voltage Range: **9 – 30 V**
Output Signal Type: **4 – 20 mA**

Features

Product Type Features

Pressure Sensor Type	Industrial Pressure Transducer
Pressure Type	Absolute

Configuration Features

Electrical Connection	Packard
-----------------------	---------

Electrical Characteristics

Supply Voltage Range	9 – 30 V
----------------------	----------

Body Features

Port Material	316L
---------------	------

Dimensions

Product Height	57.15 mm[2.25 in]
Hex Width Across Flats	24 mm[.944 in]

Usage Conditions

Pressure	14 bar[203.05 psi]
Operating Temperature Range	-40 – 125 °C[-40 – 257 °F]

Operation/Application

Output Signal Type	4 – 20 mA
Proof Pressure Range	3X Rated



Pressure Accuracy	±0.1% FSO
-------------------	-----------

Other

Sensor Options	Adhesive Label, No Snubber
Port Fitting	1/4 MBSPP

Product Compliance

For compliance documentation, visit the product page on TE.com>

EU RoHS Directive 2011/65/EU	Compliant with Exemptions
EU ELV Directive 2000/53/EC	Out of Scope
China RoHS 2 Directive MIIT Order No 32, 2016	Restricted Materials Above Threshold
EU REACH Regulation (EC) No. 1907/2006	Current ECHA Candidate List: JAN 2025 (247) Candidate List Declared Against: JAN 2025 (247) Does not contain REACH SVHC
Halogen Content	Not Yet Reviewed for halogen content
Solder Process Capability	Not reviewed for solder process capability

Product Compliance Disclaimer

This information is provided based on reasonable inquiry of our suppliers and represents our current actual knowledge based on the information they provided. This information is subject to change. The part numbers that TE has identified as EU RoHS compliant have a maximum concentration of 0.1% by weight in homogenous materials for lead, hexavalent chromium, mercury, PBB, PBDE, DBP, BBP, DEHP, DIBP, and 0.01% for cadmium, or qualify for an exemption to these limits as defined in the Annexes of Directive 2011/65/EU (RoHS2). Finished electrical and electronic equipment products will be CE marked as required by Directive 2011/65/EU. Components may not be CE marked. Additionally, the part numbers that TE has identified as EU ELV compliant have a maximum concentration of 0.1% by weight in homogenous materials for lead, hexavalent chromium, and mercury, and 0.01% for cadmium, or qualify for an exemption to these limits as defined in the Annexes of Directive 2000/53/EC (ELV). Regarding the REACH Regulation, the information TE provides on SVHC in articles for this part number is based on the latest European Chemicals Agency (ECHA) ‘Guidance on requirements for substances in articles’ posted at this URL: <https://echa.europa.eu/guidance-documents/guidance-on-reach>

Compatible Parts



TE Part # U5354-000005-03KPA
[PRESS XDCR U5354-000005-03KPA](#)



TE Part # U5354-000002-002BA
[PRESS XDCR U5354-000002-002BA](#)

Also in the Series | MEAS U5300



Industrial Pressure Transducers(5)



Pressure Transducers(5)

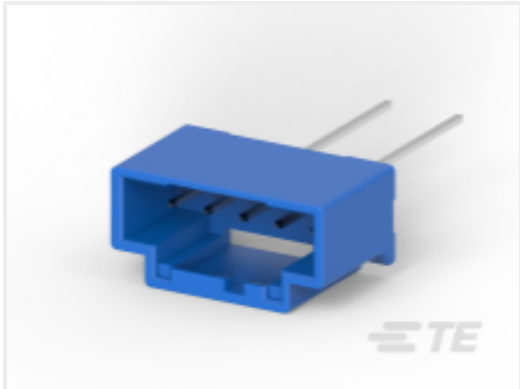
Customers Also Bought



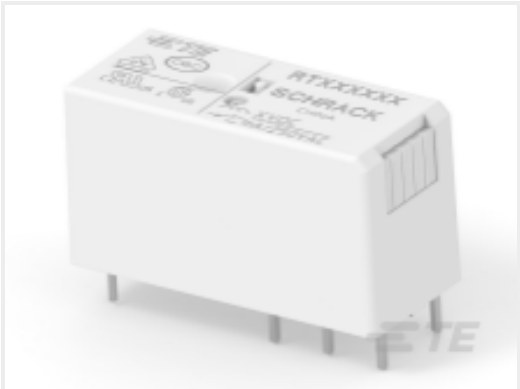
TE Part #2-2291728-1
D3200M FMLB REC HSG 12P SSKEY



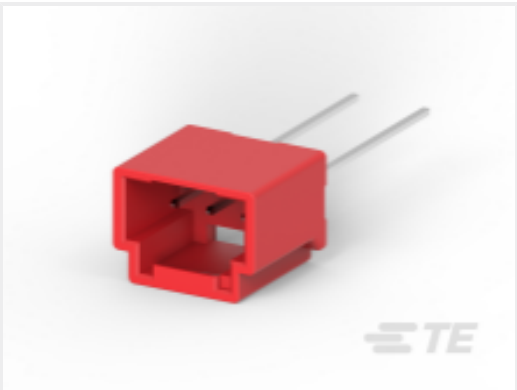
TE Part #5223654002
CGPE-105-1/2-X-SP



TE Part #5-2232546-2
GI2.5 HDR ASS 5P BL NO BOSS TAPE



TE Part #2-1649328-8
RT334005



TE Part #3-2232546-3
GI2.5 HDR ASS 3P RED NO BOSS TAPE



TE Part #2-2170808-5
QSFP28, 1X2, CAGE ASSY, SPRING, HS, LP



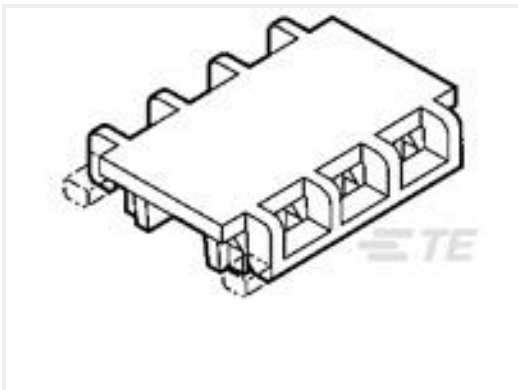
TE Part #7-1879279-1
RP 2A 110K 0.1% 15PPM 1K RL



TE Part #277148-3
TERMINAL,COPALUM R 6 5/16



TE Part #YDIV44E15-35SNC001
RECP ASSY



TE Part #1-643077-9
19P MTA100 MOLDED COVER F/T

Documents

CAD Files

3D PDF

3D

Customer View Model

ENG_CVM_CVM_U5354-000002-014BA_H.2d_dxf.zip

English

Customer View Model

ENG_CVM_CVM_U5354-000002-014BA_H.3d_igs.zip



English

Customer View Model

[ENG_CVM_CVM_U5354-000002-014BA_H.3d_stp.zip](#)

English

By downloading the CAD file I accept and agree to the [Terms and Conditions](#) of use.

Datasheets & Catalog Pages

[U5300](#)

English